



La solution à votre mesure



/ Test & Measure



Simply Reliable

2024 Good Will Instrument Co., Ltd.

SHORTFORM

OSCILLOSCOPES

SPECTRUM ANALYZERS

SIGNAL SOURCES

POWER SUPPLIES

DIGITAL MULTIMETERS
LCR METERS
SAFETY TESTERS
OTHER METERS

- Digital Storage Oscilloscope
- Mixed-signal Oscilloscope
- Mixed-domain Oscilloscope
- Oscilloscope Education and Training Kit

SPECTRUM ANALYZERS

- 8.0 GHz Spectrum Analyzer
- 3.8 GHz Spectrum Analyzer
- 3.25 GHz Spectrum Analyzer
- 3.0 GHz Spectrum Analyzer
- 1.8 GHz Spectrum Analyzer
- RF Training System

SIGNAL SOURCES

- RF Signal Generator
- Arbitrary Function Generator
- Multi-Channel Function Generator
- True Dual Channel Arbitrary Function Generator
- DDS Function Generator
- Analog Function Generator

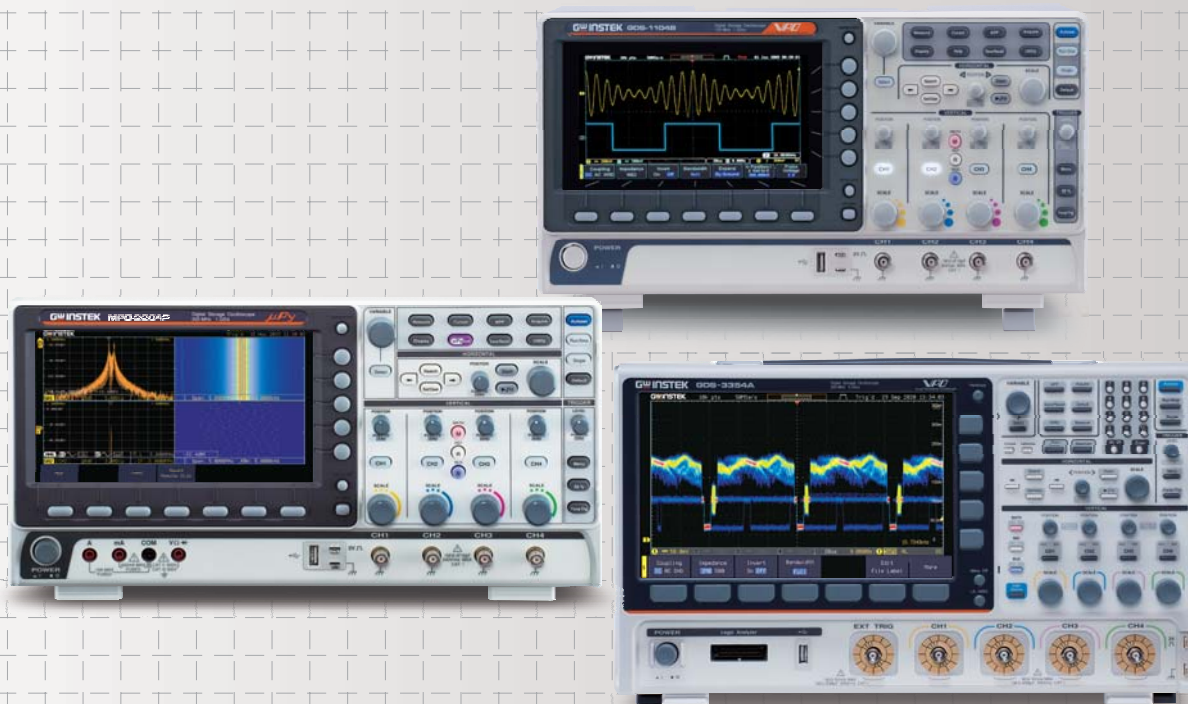
POWER SUPPLIES

- Source Measure Unit
- High-Performance AC/DC Power Supply
- Linear AC Power Source
- Switching DC Power Supply Signal/Multiple Output Channel
- Linear DC Power Supply Signal/Multiple Output Channel
- DC Power Supply+DC Load Integration Model
- High-Speed DC Power Supply
- AC/DC Electronic Load
- Current Shunt

DIGITAL MULTIMETERS/LCR METERS/SAFETY TESTERS/OTHER METERS

- Digit Dual Measurement Multimeter
- Digital Multimeter
- Mini Clamp Meter
- LCR Meter
- Handheld LCR Meter
- Electrical Safety Analyzer
- Electrical Safety Tester
- Multi-Channel Hipot Tester
- AC Ground Bond Tester
- Leakage Current Tester
- Data Acquisition System
- Digital Power Meter
- D.C. Milli-ohm Meter
- Battery Meter
- Automatic Distortion Meter
- Intelligent Counter





GDS-1000B Series
MPO-2000A Series
GDS-3000A Series

200/100/70/50MHz Digital Storage Oscilloscope
200/100MHz Digital Storage Oscilloscope
650/350MHz Digital Storage Oscilloscope

OSCILLOSCOPES

The frequency bandwidth ranges from 50MHz to the high-class 650MHz. In addition, up to 5GSa/s realtime sampling rate and 200M points memory depth can pick up and hold the complete signal in order to preserve the accuracy. PC interfaces such as USB, LAN, GPIB, RS-232C, and Printer Port are integrated to the panel to satisfy data transmit/save needs. GDS-3000A digital storage oscilloscopes have 650MHz and 350MHz models with two-channel and 16-channel logic analyzer options.

The series features the memory length of each channel up to 200Mpts; the sampling rate of 5GSa/s half channels and 2.5GSa/s on all channels. GDS-3000A provides a rich measurement items for switch mode power supply testing. The provided power supply test items include AC input analysis items: Power Quality, Harmonics, Inrush Current and other; DC output analysis required test items: Ripple/Noise, Transient Response Analysis, Turn On/OFF, Efficiency; Control Loop response(Bode) and PSRR(Power Supply Rejection Ratio); Complete switching component analysis items: Modulation, Switching loss, SOA(Safe Operation Area) and Magnetics analysis: B-H curve. The MDO-2000A series is multi-functional mixed domain oscilloscope. While entering the spectrum mode, MDO-2000A Series will display a full screen of frequency domain. Users can input Center frequency, Span, Start frequency, and Stop frequency based upon test requirements so as to rapidly and intuitively observe required frequency range that allows users to experience the user interface of a real spectrum analyzer. MDO-2000AG and MDO-2000E also provide frequency response analysis function, it allows users to obtain DUT's FRA characteristic curve plot (Bode plot).

MPO-2000 is the only product of its class that has a built-in Python GUI library. Users can build their own test systems at a lower cost. A variety of executable Python APPs are built-in. An all-in-one instrument with affordable pricing is ideal for test and measurement automation teaching courses; small-scale automated test of production lines, component tolerance testing for quality assurance, and diversified test applications. It is hoped that the launch of MPO-2000 can solve users' product test needs for repeatability and diversity, and can improve users' demand for simple and repetitive work efficiency and single-unit program control or the requirement of uploading test results to the cloud.

PRODUCTS

- Digital Storage Oscilloscope
- Mixed-signal Oscilloscope
- Mixed-domain Oscilloscope
- Oscilloscope Education and Training Kit

650/350MHz Digital Storage Oscilloscope

CE

VPO
Visual Persistence Oscilloscope



GDS-3654A/3354A

NEW

- * 5GSa/s Real-time Sampling Rate, 2 Input Channels
- * Per Channel 200Mpts Memory Depth
- * 200,000 wfm/s of Waveform Update Rate
- * 10.2 inch 800 x 480 TFT LCD Display
- * Built-in 13 Sets of Power Analysis Measurements
- * 490,000 Segments of Segmented Memory and the Waveform Search Function to Optimize the Efficiency of Record Length
- * I²C/UART/CAN/LIN Serial Bus Trigger and Decoding Functions
- * Dual Channel Spectrum Analyzer (DC~2.5GHz) with Spectrogram
- * Dual Channel 25MHz Arbitrary Waveform Generator
- * Optional 16 Digital Channels with a Logic Analyzer(MSO)

650/350MHz Digital Storage Oscilloscope

CE

VPO
Visual Persistence Oscilloscope



GDS-3652A/3352A

NEW

- * 5GSa/s Real-time Sampling Rate, 2 Input Channels
- * Per Channel 200Mpts Memory Depth
- * 200,000 wfm/s of Waveform Update Rate
- * 10.2 inch 800 x 480 TFT LCD Display
- * Built-in 13 Sets of Power Analysis Measurements
- * 490,000 Segments of Segmented Memory and the Waveform Search Function to Optimize the Efficiency of Record Length
- * I²C/UART/CAN/LIN Serial Bus Trigger and Decoding Functions
- * Dual Channel Spectrum Analyzer (DC~2.5GHz) with Spectrogram
- * Dual Channel 25MHz Arbitrary Waveform Generator
- * Optional 16 Digital Channels with a Logic Analyzer(MSO)

500MHz Digital Storage Oscilloscope

CE

Patent No.: ZL201220307783.4
ZL20121021617.9

VPO
Visual Persistence Oscilloscope



GDS-3504

- * 5GSa/s Real-time Sampling Rate and 100GSa/s Equivalent Time Sampling Rate, 4 Input Channels
- * 25k Points Memory for Each Input Channel
- * VPO (Visual Persistence Oscilloscope) Technology to Display Less-Frequently-Occurred Signals
- * 8" 800 x 600 High Resolution TFT LCD Display
- * Unique Split Screen System with Independent Setting and Display for Each Input Channel
- * Three Input Impedance Selections: 50Ω/75Ω/1MΩ
- * Optional Power Analysis Software for Power Source Measurement and Analysis
- * Optional Serial Bus Analysis Software for Trigger & Decode of I²C, SPI and UART Interfaces

500MHz Digital Storage Oscilloscope

CE

Patent No.: ZL201220307783.4
ZL20121021617.9

VPO
Visual Persistence Oscilloscope



GDS-3502

- * 5GSa/s Real-time Sampling Rate and 100GSa/s Equivalent Time Sampling Rate, 2 Input Channels
- * 25k Points Memory for Each Input Channel
- * VPO (Visual Persistence Oscilloscope) Technology to Display Less-Frequently-Occurred Signals
- * 8" 800 x 600 High Resolution TFT LCD Display
- * Unique Split Screen System with Independent Setting and Display for Each Input Channel
- * Three Input Impedance Selections: 50Ω/75Ω/1MΩ
- * Optional Power Analysis Software for Power Source Measurement and Analysis
- * Optional Serial Bus Analysis Software for Trigger & Decode of I²C, SPI and UART Interfaces

300/200/100MHz Digital Storage Oscilloscope

CE

VPO
Visual Persistence Oscilloscope



GDS-2304A/2204A/2104A

- * 2GSa/s Real-time Sampling Rate and 100GSa/s Equivalent Time Sampling Rate, 4 Input Channels
- * 2MegaPoints Record Length
- * Fastest 80,000 wfm/s of Waveform Update Rate
- * Segmented Memory Acquisition and Waveform Search Functions
- * Standard Model Provides I²C, UART, SPI, CAN/LIN Serial Bus Trigger and Decoding Functionalities
- * Optional 8 or 16 digital channel with Logic analyzer(MSO)
- * Optional 5MHz Function Generator
- * Upgradable, Advanced Logic, Datalog, DVM and H-expansion Functionalities

200MHz Digital Storage Oscilloscope

CE

VPO
Visual Persistence Oscilloscope



MPO-2204P/2202P

NEW

- * MPO-2000P: 200MHz; 4CH/2CH
- * Allow to Use Python Scripts to Control for Automation Purpose
- * Dual Channel Spectrum Analyzer With Spectrogram
- * I²C/SPI/UART/CAN/LIN Serial Bus Trigger and Decoding Function
- * MPO-2000P: CAN FD, USB 2.0(Full Speed), Flexray, USB PD, I²S Digital Decoding
- * Data Log Function is Able to Track Signal Changes up to 1000 Hours
- * Network Storage Function
- * Equips With a Spectrum Analyzer; a Dual Channel 25MHz AWG; DMM and Power Supply
- * Power Supply: Dual Channel Output, 1V to 20V

100MHz Digital Storage Oscilloscope

CE

VPO
Visual Persistence Oscilloscope



MPO-2104B/2102B

NEW

- * MPO-2000B: 100MHz; 4CH/2CH
- * Allow to Use Python Scripts to Control for Automation Purpose
- * Dual Channel Spectrum Analyzer With Spectrogram
- * I²C/SPI/UART/CAN/LIN Serial Bus Trigger and Decoding Function
- * MPO-2000B: CAN FD, USB 2.0 (Full Speed) Digital Decoding
- * Data Log Function is Able to Track Signal Changes up to 1000 Hours
- * Network Storage Function
- * Equips With a Spectrum Analyzer; a Dual Channel 25MHz AWG; DMM and Power Supply
- * Power Supply: Dual Channel Output, 1V to 20V

200/100MHz Mixed-signal Oscilloscope

CE

VPO
Visual Persistence Oscilloscope



MSO-2204E/2104E

- * Maximum Real Time Sample Rate:1GSa/s,4 Input Channels
- * MSO-2000E Equips with a 16 Channel Logic Analyzer
- * MSO-2000EA Equips with a 16 Channel Logic Analyzer and a Dual Channel 25MHz Arbitrary Waveform Generator
- * Free Frequency Response Analyzer Software for MSO-2000EA
- * Maximum 10M Memory Depth and VPO Waveform Display Technology
- * Waveform Update Rate up to 120,000 wfm/s
- * 8" WVGA TFT LCD
- * Maximum 1M FFT Provides Higher Frequency Domain Resolution Measurements
- * High Pass, Low Pass and Band Pass Filter Functions
- * I²C/SPI/UART/CAN/LIN Serial Bus Trigger and Decoding Functions
- * Mask Test Function

200/100MHz Mixed-signal Oscilloscope

CE

VPO
Visual Persistence Oscilloscope



MSO-2202E/2102E

- * Maximum Real Time Sample Rate:1GSa/s,2 Input Channels
- * MSO-2000E Equips with a 16 Channel Logic Analyzer
- * MSO-2000EA Equips with a 16 Channel Logic Analyzer and a Dual Channel 25MHz Arbitrary Waveform Generator
- * Free Frequency Response Analyzer Software for MSO-2000EA
- * Maximum 10M Memory Depth and VPO Waveform Display Technology
- * Waveform Update Rate up to 120,000 wfm/s
- * 8" WVGA TFT LCD
- * Maximum 1M FFT Provides Higher Frequency Domain Resolution Measurements
- * High Pass, Low Pass and Band Pass Filter Functions
- * I²C/SPI/UART/CAN/LIN Serial Bus Trigger and Decoding Functions
- * Mask Test Function

300/200/100MHz Mixed-Domain Oscilloscope



MDO-2302A(G)/2202A(G)/2102A(G)

- * 300/200/100MHz Bandwidth Selections: 2 Channels
- * Maximum Real Time Sampling Rate: 2 GSa/s
- * MDO-2000A Equips with a Spectrum Analyzer; MDO-2000AG Equips with a Spectrum Analyzer, a Dual Channel 25MHz AWG
- * Per Channel 20M Memory Depth and VPO Waveform Display Technology
- * Waveform Update Rate up to 120,000 wfm/s & 8" WVGA TFT LCD
- * MDO-2000AG Provides Frequency Response Analysis Function
- * Maximum 1M FFT Provides Higher Frequency Domain Resolution Measurements
- * High Pass, Low Pass and Band Pass Filter Functions
- * 29,000 Segmented Memory Sections and Waveform Search Function
- * I²C/UART/CAN/LIN Serial Bus Trigger and Decoding Functions
- * Data Log Function is able to Track Signal Changes up to 1000 Hours
- * Mask Test Function & Network Storage Function

200/100/70MHz Mixed-domain Oscilloscope



MDO-2204E/2104E/2074E

- * Maximum Real Time Sample Rate: 1 GSa/s, 4 Input Channels
- * MDO-2000EG Equips with a Spectrum Analyzer and a Dual Channel 25MHz AWG
- * MDO-2000EX Equips with a Spectrum Analyzer; a Dual Channel 25MHz AWG; DMM and Power Supply
- * Per Channel 10M Memory Depth and VPO Waveform Display Technology
- * Waveform Update Rate up to 120,000 wfm/s & 8" WVGA TFT LCD
- * Free Frequency Response Analyzer Software
- * Maximum 1M FFT Provides Higher Frequency Domain Resolution Measurements
- * High Pass, Low Pass and Band Pass Filter Functions
- * 29,000 Segmented Memory Sections and Waveform Search Functions
- * I²C/SPI/UART/CAN/LIN Serial Bus Trigger and Decoding Functions
- * Data Log Function is Able to Track Signal Changes up to 1000 Hours
- * Mask Test Function & Network Storage Function

200/100/70MHz Mixed-domain Oscilloscope



MDO-2202E/2102E/2072E

- * Maximum Real Time Sample Rate: 1 GSa/s, 2 Input Channels
- * MDO-2000EG Equips with a Spectrum Analyzer and a Dual Channel 25MHz AWG
- * MDO-2000EX Equips with a Spectrum Analyzer; a Dual Channel 25MHz AWG; DMM and Power Supply
- * Per Channel 10M Memory Depth and VPO Waveform Display Technology
- * Waveform Update Rate up to 120,000 wfm/s & 8" WVGA TFT LCD
- * Free Frequency Response Analyzer Software
- * Maximum 1M FFT Provides Higher Frequency Domain Resolution Measurements
- * High Pass, Low Pass and Band Pass Filter Functions
- * 29,000 Segmented Memory Sections and Waveform Search Functions
- * I²C/SPI/UART/CAN/LIN Serial Bus Trigger and Decoding Functions
- * Data Log Function is Able to Track Signal Changes up to 1000 Hours
- * Mask Test Function & Network Storage Function

200/100/70MHz Digital Storage Oscilloscope



GDS-2204E/2104E/2074E

- * Sampling Rate : Max. 1GSa/s, 4 Input Channels
- * 10M/ch Memory Depth and VPO Waveform Display Technology
- * Waveform Update Rate of 120,000 wfm/s
- * 8" 800 x 480 TFT LCD Display
- * Max. 1M pts of FFT to Get Higher Resolution in Frequency Domain
- * Digital Filter Function
- * Segmented Memory and Waveform Search Functions
- * I²C/SPI/UART/CAN/LIN Serial Bus Trigger and Decoding Function
- * Data Log Function for Waveform Observation in Long Periods of Time

200/100/70MHz Digital Storage Oscilloscope



GDS-2202E/2102E/2072E

- * 200/100/70MHz Bandwidth, 2 Input Channels
- * Sampling Rate : Per Channel 1GSa/s(2ch Model)
- * 10M/ch Memory Depth and VPO Waveform Display Technology
- * Waveform Update Rate of 120,000 wfm/s
- * 8" 800 x 480 TFT LCD Display
- * Max. 1M pts of FFT to Get Higher Resolution in Frequency Domain
- * Digital Filter Function
- * Segmented Memory and Waveform Search Functions
- * I²C/UART/CAN/LIN Serial Bus Trigger and Decoding Function
- * Data Log Function for Waveform Observation in Long Periods of Time

100/70/50 MHz Digital Storage Oscilloscope



GDS-1104B/1074B/1054B

- * 100MHz/70MHz/50MHz Bandwidth Selections, 4 Input Channels
- * 1GSa/s Maximum Sampling Rate
- * 10M Maximum Memory Depth For Each Channel
- * 7" 800 x 480 WVGA LCD Display
- * 256 Color Gradient Display Function to Strengthen Waveform Performance
- * 1Mpts FFT Frequency Domain Signal Display
- * I²C/SPI/UART/CAN/LIN Serial Bus Trigger and Decoding Functions
- * Zero Key Function For Horizontal Time, Vertical Voltage and Triggering
- * Compact and Innovative Exterior Design

200/100/70 MHz Digital Storage Oscilloscope



GDS-1202B/1102B/1072B

- * 200MHz/100MHz/70MHz MHz Bandwidth Selections, 2 Input Channels
- * 1GSa/s Maximum Sampling Rate
- * 10M Maximum Memory Depth For Each Channel
- * 7" 800 x 480 WVGA LCD Display
- * 256 Color Gradient Display Function to Strengthen Waveform Performance
- * 1Mpts FFT Frequency Domain Signal Display
- * I²C/UART/CAN/LIN Serial Bus Trigger and Decoding Functions
- * Zero Key Function For Horizontal Time, Vertical Voltage and Triggering
- * Compact and Innovative Exterior Design

200/100/70 MHz Digital Storage Oscilloscope



GDS-300 Series

- * 200/100/70MHz Bandwidth Selections, 2 Input Channels
- * 1GSa/s Maximum Sample Rate
- * Maximum 5M Memory Depth Per Channel
- * 7" 800 x 480 Full Touch Panel Capacitive LCD Multi-Point Control, Landscape and Portrait Display
- * Built-In 50,000 Counts DMM
- * 30,000 Consecutive Waveform Records Logging Function, Replay Measurement Results Any Time
- * Temperature Measurement and Logging Function
- * Built-In Engineering Calculator, SMD Resistance Coding, Color Coding Info, and Attenuator Calculation Application Software
- * Optional Differential Probe to Achieve Isolation Effect

200/100/70 MHz Digital Storage Oscilloscope



GDS-200 Series

- * 200/100/70MHz Bandwidth Selections, 2 Input Channels
- * 1GSa/s Maximum Sample Rate
- * Maximum 1M Memory Depth Per Channel
- * 7" 800 x 480 Full Touch Panel Capacitive LCD Multi-Point Control, Landscape and Portrait Display
- * Built-In 5,000 Counts DMM
- * 30,000 Consecutive Waveform Records Logging Function, Replay Measurement Results Any Time
- * Data Logging Function
- * Built-In Engineering Calculator, SMD Resistance Coding, Color Coding Info, and Attenuator Calculation Application Software
- * Optional Differential Probe to Achieve Isolation Effect

300kHz/200A AC/DC Current Probe



GCP-300

Probe Bandwidth	DC~300kHz
Rise Time	1.17μs (Typ.)
Maximum Continuous Input Range	200A (10mV/A) 20A (100mV/A)
Maximum Peak Current Value	DC : 200A AC : 140Arms
Output Voltage Rate	100mV/A; 10mV/A
DC Amplitude Accuracy	±3% ±50 mA at 100 mV/A (50 mA ~ 20A peak range) ±4% ±50 mA at 10 mV/A (500 mA ~ 80A peak range) ±15% max at 10 mV/A (80A peak ~ 200A peak range)
Maximum Rated Voltage	CAT III 300V/CAT II 600V

500kHz/150A AC/DC Current Probe



GCP-500

Probe Bandwidth	DC~500kHz
Rise Time	0.7μs (Typ.)
Maximum Continuous Input Range	150A (20mV/A) 15A (200mV/A)
Maximum Peak Current Value	DC : 150A AC : 100Arms
Output Voltage Rate	200mV/A; 20mV/A
DC Amplitude Accuracy	±3% ±30 mA at 200 mV/A (30 mA ~ 15 A peak range) ±4% ±300 mA at 20 mV/A (300 mA ~ 80 A peak range) ±15% max at 20 mV/A (80A peak ~ 150A peak range)
Maximum Rated Voltage	CAT III 600V

1MHz/70A AC/DC Current Probe



GCP-1000

Probe Bandwidth	DC~1MHz
Rise Time	0.35μs (Typ.)
Maximum Continuous Input Range	7A (50mV/A) 70A (500mV/A)
Maximum Peak Current Value	DC : 70A AC : 50Arms
Output Voltage Rate	500mV/A; 50mV/A
DC Amplitude Accuracy	±3% ±20 mA at 500 mV/A (20 mA ~ 7A peak range) ±4% ±200 mA at 50 mV/A (200 mA ~ 50 A peak range) ±15% max at 50 mV/A (50A peak ~ 70A peak range)
Maximum Rated Voltage	CAT III 600V

High-voltage Differential Probe



GDP-025

Probe Bandwidth	DC~25MHz ; DC~15MHz
Attenuation	x20, x50, x200
Accuracy	±2%
Voltage Input Range (DC+AC peak to peak)	≤ 140Vp-p for x 20 ≤ 350Vp-p for x 50 ≤ 1400Vp-p for x 200

High-voltage Differential Probe



GDP-050

Probe Bandwidth	DC~50MHz
Attenuation	x100, x200, x500, x1000
Accuracy	±2%
Voltage Input Range (DC+AC peak to peak)	≤ 700Vp-p for x 100 ≤ 1400Vp-p for x 200 ≤ 3500Vp-p for x 500 ≤ 7000Vp-p for x 1000

High-voltage Differential Probe



GDP-100

Probe Bandwidth	DC~100MHz
Attenuation	x100, x200, x500, x1000
Accuracy	±2%
Voltage Input Range (DC+AC peak to peak)	≤ 700Vp-p for x 100 ≤ 1400Vp-p for x 200 ≤ 3500Vp-p for x 500 ≤ 7000Vp-p for x 1000

Current Probe



GCP-530

Probe Bandwidth	DC~50MHz
Rise Time	7ns or less
Maximum Continuous Input Range	30Arms
Maximum Peak Current Value	50A peak
Output Voltage Rate	0.1V/A
Noise	2.5mArms or less
Rate Supply Voltage	±12V± 0.5V
Maximum Rated Power	5.6VA
Maximum Rated Voltage	300V, CAT I

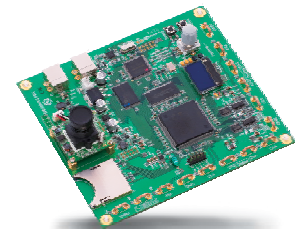
Current Probe



GCP-1030

Probe Bandwidth	DC~100MHz
Rise Time	3.5ns or less
Maximum Continuous Input Range	30Arms
Maximum Peak Current Value	50A peak
Output Voltage Rate	0.1V/A
Noise	2.5mArms or less
Rate Supply Voltage	±12V± 0.5V
Maximum Rated Power	5.3VA
Maximum Rated Voltage	300V, CAT I

Oscilloscope Education and Training Kit



GDB-03

The GDB-03 training kit allows you to learn both the basic and the advanced functions of the GDS-3000 Series, MSO-2000/GDS-2000A Series and GDS-1000B Series Digital Storage Oscilloscope (DSO). Following the training procedures of this training kit, you will quickly understand the basic operations of a DSO, and the unique features, which represents a typical hi-tech DSO today.

The training kit is a signal generator board capable of producing waveforms, which contain various real-life scenarios you might encounter. With the GDB-03 training kit and the included curriculums, you are able to acquire adequate knowledge in using a DSO with advanced features.

Power Supply



GCP-206P (for GCP-530/1030)

Power Supply



GCP-425P (for GCP-530/1030)

Accessories



GKT-100
Deskew Fixture
(For GDS-3000A Series)

Compatible Current Probe	GCP-530 & GCP-1030	Compatible Current Probe	GCP-530 & GCP-1030
Number of Power Supply Connectors	2	Number of Power Supply Connectors	4
Output Voltage	±12V± 0.5V	Output Voltage	±12V± 0.5V
Rated Output Current	±600mA	Rated Output Current	±2.5A
Rated Supply Voltage (50/60Hz)	110V/120V, 220V/240VAC±10%	Rated Supply Voltage (50/60Hz)	100V~240V AC±10%
Maximum Rated Power	20VA	Maximum Rated Power	170VA
Dimensions & Weight	73(W) x 110(H) x 186(D)mm ; Approx.1.1kg	Dimensions & Weight	80(W) x 119(H) x 200(D) mm ; Approx.1.1kg
Accessories	Power cord, fuse	Accessories	Power cord, fuse

Accessories



GTL-16E
16-Channel Logic Analyzer Probe
(For MSO-2000E Series)

Accessories



DS3A-16LA
16-Channel Logic Analyzer
(For GDS-3000A Series)

Accessories

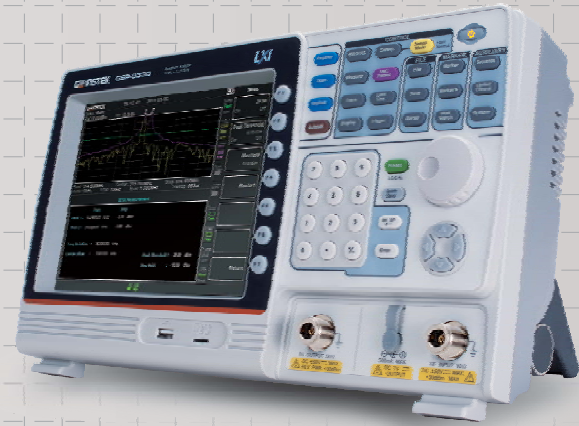


GCP-201
Probe Clip , 20PCS
(For MSO-2000E Series)

NOTE



GSP-8800 8.0GHz Spectrum Analyzer



GSP-9330 3.25GHz Spectrum Analyzer

SPECTRUM ANALYZERS

GW Instek's spectrum analyzer product line has three categories: application, basic and educational spectrum analyzers. These three categories are suitable for a wide range of test applications, ranging from R&D, service, maintenance, manufacturing, education and other RF-related fields.

The entire product line has five frequency ranges. The bandwidth ranges are 1.8GHz / 3GHz / 3.25GHz / 3.8GHz / 8.0GHz respectively to meet the measurement functions of various applications, including ASK/FSK/AM/FM demodulation analysis, ACPR/OCBW/CHPW, SEM measurement, TOI, Harmonic, CNR/CTB/CSO, frequency counter and USB, RS-232, Lan, MicroSD, GPIB are also provided for the communication interface.

There are two application spectrum analyzers, GSP-9330 and GSP-9300B. GSP-9330 has built-in unique EMI-specific functions and is equipped with special test accessories, allowing engineers to quickly and accurately identify EMI problems. In order to provide more stable measurement and further signal analysis, it has built-in Spectrogram and Topographic display modes. Through time accumulation and image stacking, the energy changes of the signal can be easily displayed. The built-in sequence function allows customers to create and execute the required test steps directly on the instrument without the need of a PC connection.

The GSP-8000 series is a basic spectrum analyzer, providing three bandwidth measurement ranges including 1.8GHz / 3.8GHz / 8.0GHz, and built-in basic measurement functions, such as AM/FM demodulation, channel power measurement, Time Spec display functions, etc., collocating with a 10.4-inch large display and easy-to-upgrade TG and EMI optional functions, which are suitable for general RF measurement applications.

GSP-730 is a spectrum analyzer developed for the education market and is equipped with a dedicated GRF1300/1300A communications module for teaching communications courses.

PRODUCTS

- 8.0 GHz Spectrum Analyzer
- 3.8 GHz Spectrum Analyzer
- 3.25 GHz Spectrum Analyzer
- 3.0 GHz Spectrum Analyzer
- 1.8 GHz Spectrum Analyzer
- RF Training System

3.25GHz Spectrum Analyzer

CE



GSP-9330

- * Frequency Range : 9kHz ~ 3.25GHz
- * 0.025ppm Frequency Stability and 1ppm Aging Rate
- * RBW : 1Hz ~ 1MHz (3dB), 6dB EMI Filter : 200Hz, 9kHz, 120kHz, 1MHz
- * Fastest Sweep Time : 204 μ s
- * Sensitivity : -149 dBm/Hz (@PreAmp on)
- * Built-in Preamplifier, 50dB Attenuator, and Sequence Function
- * Built-in EMC Pretest Function, Quasi-Peak/Average EMI Detect Mode
- * Built-in 2FSK Analysis, AM/FM/ASK/FSK Demodulation & Analysis
- * Built-in P1dB Point, Harmonic, CHPW, OCBW, ACPR, SEM, TOI, CNR, CTB, CSO, N-dB Bandwidth, Noise Marker, Frequency Counter, TDP, Gated Sweep
- * Built-in Spectrogram, Topographic and Split-Window Display Modes
- * Remote Control EMI Measurement Software : SpectrumShot
- * Remote Control Interface : LAN, USB, RS-232
- * Options : Tracking Generator, GPIB Interface

8.0GHz/3.8GHz/1.8GHz Spectrum Analyzer

CE



NEW

GSP-8000 Series

- * Frequency Range
 - GSP-8800 : 9kHz ~ 8.0GHz
 - GSP-8380 : 9kHz ~ 3.8GHz
 - GSP-8180 : 9kHz ~ 1.8GHz
- * RBW : 1Hz ~ 1MHz; VBW : 10Hz ~ 1MHz
- * Phase Noise : -104 dBc/Hz Typical
- * Sensitivity : -160dBm/Hz Typical @PreAmp On
- * Built-in AM/FM Demodulation
- * Built-in Time Spec Function
- * Measurement Function : ACPR/OCBW/CHPW, NdB Bandwidth, Freq. Counter, Noise Marker
- * Built-in 20dB Preamplifier Standard
- * Interface : Lan, USB Host/Device
- * Screen : 10.4" XGA Output (1024*768)
- * Options : Tracking Generator, EMI Detector

3GHz Spectrum Analyzer

CE

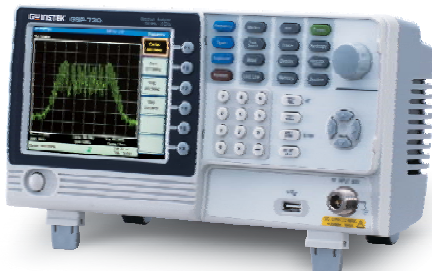


GSP-9300B

- * Frequency Range : 9kHz ~ 3 GHz
- * 0.025ppm Frequency Stability and 1ppm Aging Rate
- * Built-in Preamplifier, 50dB Attenuator, and Sequence Function
- * RBW : 1Hz ~ 1MHz
- * Sensitivity : -149dBm/Hz (@PreAmp on)
- * Built-in AM/FM Demodulation & Analysis
- * Built-in P1dB point, Harmonic, Channel Power, N-dB Bandwidth, OCBW, ACPR, SEM, TOI, CNR, CTB, CSO, Noise Marker, Frequency Counter, Time Domain Power, Gated Sweep
- * Built-in Spectrogram, Topographic and Dual-View Display Modes
- * Remote Control Software : SpectrumShot
- * Remote Control Interface : LAN, USB, RS-232
- * Options : Tracking Generator, GPIB Interface

3GHz Spectrum Analyzer

CE



GSP-730

- * Frequency Range : 150kHz ~ 3GHz
- * Autoset Function
- * Noise level : \leq -100dBm
- * RBW Range : 30kHz, 100kHz, 300kHz, 1MHz
- * ACPR/CHPW/OCBW Measurement
- * 3 Traces in Different Colors
- * Split Window Function
- * Limit Line Function
- * Remote Control Software
- * Presentation Material for Training Courses
- * Support Interface : USB Device/Host, RS-232C
- * 5.6" TFT LCD with VGA Output



GSP-730

- * Frequency Range : 150kHz ~ 3GHz
- * Autotest Function
- * Noise level : $\leq -100\text{dBm}$
- * RBW Range : 30kHz, 100kHz, 300kHz, 1MHz
- * ACPR/CHPW/OCBW Measurement
- * 3 Traces in Different Colors
- * Split Window Function
- * Limit Line Function
- * Remote Control Software
- * Presentation Material for Training Courses
- * Support Interface : USB Device/Host, RS-232C
- * 5.6" TFT LCD with VGA Output

GRF-1300A

- * Waveform Support :
Sine Wave : 0.1 ~ 3MHz
Square Wave : 0.1 ~ 3MHz
Triangle Wave : 0.1 ~ 3MHz
- * RF Frequency : 870 ~ 920MHz
- * AM Modulation & FM Modulation
- * 5 On/Off Switches and 5 Test Points to Simulate 8 Failure Conditions for Learning Outcome Test
- * USB Interface to Provide Remote Control
- * Mixer & 2.4GHz Band Pass Filter

USG-LF44

- * Frequency Range : 34.5MHz~4400MHz
- * Output Power Range : -30dBm~0dBm
- * Continuous Wave Signal Without any Modulation
- * Support Fixed Frequency, Frequency Sweep, Frequency Hopping & Power Sweep Mode
- * -107dBc/Hz Phase Noise@100kHz Offset
- * Frequency Resolution : 10kHz
- * PC USB Interface Powered and Controlled
- * External PC Software Support Different Operating System



GSP-730

- * Frequency Range : 150kHz ~ 3GHz
- * Autotest Function
- * Noise level : $\leq -100\text{dBm}$
- * RBW Range : 30kHz, 100kHz, 300kHz, 1MHz
- * ACPR/CHPW/OCBW Measurement
- * 3 Traces in Different Colors
- * Split Window Function
- * Limit Line Function
- * Remote Control Software
- * Presentation Material for Training Courses
- * Support Interface : USB Device/Host, RS-232C
- * 5.6" TFT LCD with VGA Output

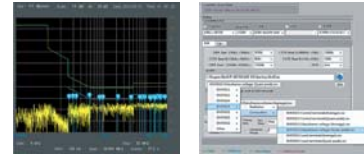
GRF-1300A

- * Waveform Support :
Sine Wave : 0.1 ~ 3MHz
Square Wave : 0.1 ~ 3MHz
Triangle Wave : 0.1 ~ 3MHz
- * RF Frequency : 870 ~ 920MHz
- * AM Modulation & FM Modulation
- * 5 On/Off Switches and 5 Test Points to Simulate 8 Failure Conditions for Learning Outcome Test
- * USB Interface to Provide Remote Control

GSP-9330

3.25 GHz Spectrum Analyzer

- * Frequency Range: 3.25GHz
- * EMC Pretest Dedicated Functions
- * Peak, QP, Average Detectors
- * PreAmp, Lin/Log Scale



Dedicated PC Software

- * SpectrumShot



GKT-008

EMI Probe Kit Set

- * Sensing Probes: ANT-04, ANT-05
- * Contact Probes: PR-01, PR-02



GLN-5040A

Two Line V-Network



GIT-5060

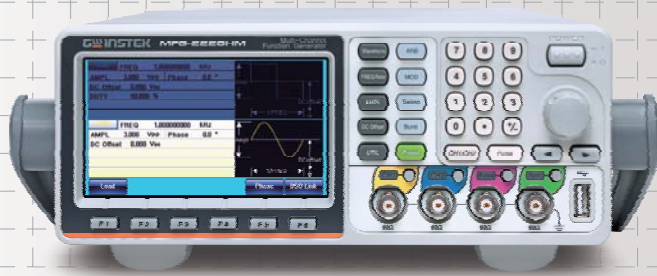
Isolation Transformer



GPL-5010

Transient Limiter

NOTE



- | | |
|------------------------|--|
| GSG-2000 Series | 6/3GHz RF Signal Generator |
| AFG-3081/3051 | 80/50MHz Arbitrary Function Generator |
| MFG-2000 Series | 200/60/30/20/10MHz Multi-Channel Function Generator |

SIGNAL SOURCES

GW Instek has been one of the major signal source suppliers for worldwide users by providing the advanced-featured products for decades. The wide product lines including GSG-2000 series, MFG (Multi-Channel Function Generator), AFG (Arbitrary Function Generator), RF Signal Generator and DDS (Direct Digital Synthesized) Function Generators are well provided. The GSG-2000 series provides 3 GHz and 6 GHz frequency bandwidths. The minimum frequency resolution and amplitude resolution are 1mHz and 0.01dB respectively. With respect to signal modulation, the series has built-in AM, FM and PM. GSG-2160/2130 feature the digital signal modulation function, and output up to 60MHz of digital signals, supporting ASK, PSK, APSK, QAM, FSK, MSK, user-defined IQ, user defined FSK modulation signals. The MFG-2000 series is a mainstay function generator and its special feature is that you can output maximum five channels simultaneously. One of the five channels is RF Generator and its frequency is from 1uHz to 160MHz/320MHz. The isolated channel design is an important feature of GW Instek function generators. Output Channels, synchronization and modulation input/output connector grounding are isolated from instrument chassis. The MFG-2000 series is designed for scientific research and educational applications by the RF Generator and the isolated design. The AFG-3000 series is designed for industrial, scientific research and educational applications by the high sample rate and the long waveform length. The AFG-2000 and AFG-200 series are designed to accommodate the educational and basic industrial requirements. The USG series is a pocket-sized, and USB interface compatible RF signal generator. The SFG series is a DDS based design for entry level engineering and educational applications. To fit versatile applications, each product line features different frequency ranges and/or specifications to meet the demands. Last but not least, Audio Generators are also provided for the specific fields.

PRODUCTS

- RF Signal Generator
- Arbitrary Function Generator
- Multi-Channel Function Generator
- True Dual Channel Arbitrary Function Generator
- DDS Function Generator
- Analog Function Generator

RF Signal Generator

CE



GSG-2000 Series

NEW

- * Frequency Range: GSG-2160/2060:9kHz~6GHz, GSG-2130/2030:9kHz~3GHz
- * Frequency Resolution : 1mHz
- * Amplitude Range : -140dBm to +20dBm
- * 0.01dBm Amplitude Setting Resolution
- * Amplitude Support dBm, dBuV, Vrms Unit
- * Phase Noise:<-117dBc/Hz(Typical)@1GHz Output and 20kHz Offset
- * Frequency/Amplitude Switching Speed : <5ms
- * Built-in LF Output, Pulse Output
- * Built-in in AM, FM, PM Analog Modulation
- * Support IQ Modulation Output(Only for GSG-2160/2130)
- Maximum 60MHz Baseband I or Q Modulation Output
- Maximum 120MHz RF I+Q Modulation Output
- Built-in ASK, PSK, APSK, QAM, FSK, MSK, User-define IQ, User-define FSK Modulation Signal
- * Provide USB, LAN and GPIB (Optional), Compatible SCPI Command Standard

Multi-Channel Function Generator

CE



MFG-2220HM

- * Three Output Channels
 - 2 Equivalent Performance Arbitrary Channels Frequency: 1μHz~200MHz
 - Pulse Generator Frequency: 25MHz
- * True Point by Point Output Arbitrary Waveform Function: 250MSa/s,125MHz Repetition Rate,14-bit Resolution, 16k Points Memory Depth
- * Frequency Counter : 150MHz, 8-bit Frequency Resolution
- * AM/FM/PM/ASK/FSK/PSK/SUM/PWM/PSK/ASK Modulation
- * Reference Input /Output
- * USB Host/USB Device/LAN
- * 4.3 Inch TFT Color Display

Multi-Channel Function Generator

CE



MFG-2200 Series

- * Maximum Five Output Channels
 - 2 Equivalent Performance Arbitrary Channels Frequency:1μHz~30/60MHz
 - RF Channel Frequency(FG/ARB/MOD):160/320MHz
 - Pulse Generator Frequency:25MHz
 - Power Amplifier:Low Frequency,DC~100kHz,20dB/20W (limited by current setting)
- * True Point by Point Output Arbitrary Waveform Function: 200MSa/s,100MHz Repetition Rate,14-bit Resolution, 16k Points Memory Depth * 4.3 Inch TFT Color Display
- * Earth Ground Isolation Design among I/O Terminals and Instrument Chassis
- * Frequency Counter : 150MHz, 8-bit Frequency Resolution
- * AM/FM/PM/ASK/FSK/PSK/SUM/PWM Modulation
- * Built-in Medical and Automotive Electronic Waveforms
- * USB Host/USB Device/LAN

Multi-Channel Function Generator

CE



MFG-2100 Series

- * Maximum Four Output Channels
 - Arbitrary Channel Frequency:1μHz~10/20/30/60MHz
 - RF Channel Frequency(FG/ARB/MOD):160/320MHz
 - Pulse Generator Frequency:25MHz
 - Power Amplifier:Low Frequency,DC~100kHz,20dB/20W (limited by current setting)
- * True Point by Point Output Arbitrary Waveform Function: 200MSa/s,100MHz Repetition Rate,14-bit Resolution, 16k Points Memory Depth * 4.3 Inch TFT Color Display
- * Earth Ground Isolation Design among I/O Terminals and Instrument Chassis
- * Frequency Counter : 150MHz, 8-bit Frequency Resolution
- * AM/FM/PM/ASK/FSK/PSK/SUM/PWM Modulation
- * Built-in Medical and Automotive Electronic Waveforms

Arbitrary Function Generator



AFG-3031/3032/3021/3022

- * 1μHz ~ 20 or 30MHz, 20Vpp, 1 or 2 Channel (s)
- * Arbitrary Waveform 250MSa/s, 16-bit Resolution, 8M Memory Depth
- * Isolation Channel Circuit Design
- * Synchronized Phase Operates up to 6 Units and 12 Channels
- * Harmonic Signal Generator
- * Dual Channel Models Support SUM Modulation, Coupling, Tracking, and Phase Functions
- * Pulse Waveform Parameters Can be Set Independently
- * Built-in AM/FM/PM/FSK/PWM/SUM Modulation, Sweep and Burst Functions
- * Built-in Medical and Automotive Electronic Waveforms
- * Built-in I/Q baseband waveform on AFG-3032/3022
- * Provide USB/LAN/GPIB(Optional) Instrument Control Interface

Arbitrary Function Generator

CE



AFG-3081/3051



- * Wide Frequency Range from 1 μHz ~ 80/50MHz
- * 1 μHz Frequency Resolution throughout Full Range
- * Standard Waveform : Sine, Square, Triangle, Ramp, Pulse, Noise
- * Built-In AM, FM, PWM, FSK, Sweep, Burst Functions
- * 16bit, 200MSa/s, 1M-Point Deep Arbitrary Waveform
- * Output From Any Section of 1M Point Long Waveforms
- * DWR (Direct Waveform Reconstruction) Capability
- * Arbitrary Waveform Editing PC Software
- * 4.3" High Resolution LCD Display
- * USB, RS-232C, GPIB Standard Interfaces

Arbitrary Function Generator

CE



AFG-2225

- * Wide Frequency Ranges From 1μHz~25MHz (sine wave)
- * Built-in Standard 120MSa/s, 10bit, 4k Points Arbitrary Function for Both Channels
- * True Dual-Channel Output, CH2 Provides the Same Characteristics as CH1
- * Dual-Channel Supports Couple, Tracking, Phase Operations
- * 1% ~ 99% Adjustable Duty Cycle for Square Waveform
- * Built-in Standard AM/FM/PM/FSK/SUM/Sweep/Burst and Frequency Counter
- * USB Host/Device Interface for Remote Control and Waveform Editing

Arbitrary Function Generator

CE



AFG-2100/2000 Series

- * 0.1Hz ~ 25/12/5 MHz with in 0.1Hz Resolution
- * Sine, Square, Ramp, Noise and Arbitrary Waveform
- * 20MSa/s Sampling Rate, 10 bit Vertical Resolution and 4k Point Memory for Arbitrary Waveform
- * 1% ~ 99% Adjustable Duty Cycle for Square Waveform
- * Amplitude, DC Offset and Other Key Setting Information Shown on the 3.5" LCD Screen Simultaneously
- * AM/FM/FSK Modulation, Sweep, and Frequency Counter Functions (AFG-2100 only)
- * USB Device Interface for Remote Control and Waveform Editing
- * PC Arbitrary Waveform Editing Software

DDS Function Generator

CE



SFG-1003/1013

- * DDS Technology and FPGA Design
- * Frequency Range : 0.1Hz ~ 3MHz
- * High Frequency Accuracy : ±20ppm
- * High Frequency Stability : ±20ppm
- * Max. Frequency Resolution : 100 mHz
- * Low Distortion Sine Wave : -55dBc, 0.1 Hz~200 kHz
- * Voltage Display (Only SFG-1013)



GSM-20H10

Source Measure Unit

GPP-3060/6030

Triple-channel Programmable DC Power Supply

PSW-Multi Series

Dual-channel/Triple-channel Programmable Switching DC Power Supply

ASR-6000 Series

High-Performance AC/DC Power Supply

PEL-5000C Series

High Power DC Electronic Load

PEL-500 Series

DC Electronic Load

AEL-5000 Series

AC/DC Electronic Load

PEL-5000G Series

High Power DC Electronic Load

POWER SUPPLIES

Stemming from the design and manufacture demands of electronic industries, GW Instek offers diverse power supply product lines to meet users' demand for a variety of applications. Based on different needs, the product lines can be divided into several categories including DC Power Supply, AC Power Source, DC Electronic Load and AD/DC Electronic Load. For DC Power Supply, the products can be briefly categorized by the following types, Linear, Switching, Programmable or Non-programmable, Single or Multiple Outputs, High Precision or Affordable Price, Dual Range and Wide Combinations of Voltage and Current, which can be selected to meet the application requirements.

The new ASR-Series high-performance AC/DC power supply supports both single-phase and three-phase AC input and output. It features abundant functionalities for testing and characteristic analysis of power supplies, electronic devices, components, and modules. In addition to being an AC/DC power supply, the APS-Series is fully programmable to simulate different power outputs. Sequence can be created by using 0-999 steps as well as voltage or frequency sweeps.

A diversified product line of electronic loads, testing functionalities include high-power AC/DC, single/three-phase AC loads, single and multiple channel inputs, exclusive Turbo mode, AC constant voltage loading, loading with power-on, positive or negative half-cycle loading, hot-swapping, and other advantageous features. The main application include : Electric vehicles, solar energy, energy storage systems, server power supplies, power electronics, etc., User can use the built-in dedicated test modes of GW Instek electronic loads to simplify users' operating procedures and shorten the test time.

GW Instek offers more than 100 power supply products suitable for the requirements of Electronic Assembly Testing, Education, Component Testing, Wireless Product Testing, Burn-in, Battery-Power Product Testing Automotive, Aerospace industries and so on.

PRODUCTS

- Source Measure Unit
- High-Performance AC/DC Power Supply
- Linear AC Power Source
- Switching DC Power Supply Signal/Multiple Output Channel
- Linear DC Power Supply Signal/Multiple Output Channel
- DC Power Supply+DC Load Integration Model
- High-Speed DC Power Supply
- AC/DC Electronic Load
- Current Shunt

Dual-channel/Triple-channel Programmable Switching DC Power Supply



PSW-Multi Series

NEW

- * Multi-channel: Maximum 720W for Dual-channel Models and Maximum 1080W for Triple-channel Models; Output Latency Between Channels with the Same Voltage Module is Less Than 0.1ms
- * Multiple Voltage Combinations: low Voltage Combinations Can be Selected From 30V/40V/80V/160V; High Voltage Combinations Can be Selected From 250V/800V
- * Advanced Web Server: Executes SCPI Commands; Controls Through the Server; Data log; Edit Sequence
- * CC/CV Priority Mode Selection is Ideal for Battery and LED Industries
- * Adjustable Slew Rate
- * High Efficiency and High Power Density Power Supply
- * Standard Communications Interfaces: LAN, USB, External Analog Remote Control Terminal
- * Optional Communications Interfaces: GPIB-USB Adaptor, RS232-USB cable
- * Support LabVIEW Driver

Programmable Switching DC Power Supply



PSW-Series

- * Voltage Rating : 30V/40V/80V/160V/250V/800V, Output Power Rating : 360W~1080W
- * CV/CC Priority; Particularly Suitable for the Battery and LED Industry
- * Adjustable Slew Rate
- * Series Operation (2 units in Series) for (30V/40V/80V/160V)
- * Parallel Operation (to 3 units Parallel) for (30V/40V/80V/160V/250V/800V)
- * High Efficiency and High Power Density
- * 1/2, 1/3, 1/6 Rack Mount Size Design (EIA/JIS Standard) for 360W, 720W, 1080W
- * Standard Interface : LAN,USB,Analog Control Interface
- * Optional Interface : GPIB-USB Adaptor, RS232-USB Cable
- * Support LabVIEW Driver

Model	PSW 30-36	PSW 30-72	PSW 30-108	PSW 40-27	PSW 40-54	PSW 40-81
Channel	1	1	1	1	1	1
Power	360W	720W	1080W	360W	720W	1080W
Voltage	0-30V	0-30V	0-30V	0-40V	0-40V	0-40V
Current	0-36A	0-72A	0-108A	0-27A	0-54A	0-81A

Model	PSW 80-13.5	PSW 80-27	PSW 80-40.5	PSW 160-7.2	PSW 160-14.4	PSW 160-21.6
Channel	1	1	1	1	1	1
Power	360W	720W	1080W	360W	720W	1080W
Voltage	0-30V	0-30V	0-30V	0-160V	0-160V	0-160V
Current	0-13.5A	0-27A	0-40.5A	0-7.2A	0-14.4A	0-21.6A

Model	PSW 250-4.5	PSW 250-9	PSW 250-13.5	PSW 800-1.44	PSW 800-2.88	PSW 800-4.32
Channel	1	1	1	1	1	1
Power	360W	720W	1080W	360W	720W	1080W
Voltage	0-250V	0-250V	0-250V	0-800V	0-800V	0-800V
Current	0-4.5A	0-9A	0-13.5A	0-1.44A	0-2.88A	0-4.32A

Programmable Switching DC Power Supply



PSU-Series

- * Voltage Rating: 6V/8V/12.5V/15V/20V/30V/40V/50V/60V/80V/100V/150V/300V/400V/600V
- * Output Power Rating: 1200W ~ 1560W
- * C.V/C.C Priority; Particularly Suitable for the Battery and LED Industry
- * Series and Parallel Operation(2 Units in Series/4 Units in Parallel Maximum)
- * High Efficiency and High Power Density

Model	PSU 6-200	PSU 8-180	PSU 12.5-120	PSU 15-100	PSU 20-76	PSU 30-50	PSU 40-38	PSU 50-30
Channel	1	1	1	1	1	1	1	1
Power	1200W	1440W	1500W	1500W	1520W	1500W	1520W	1500W
Voltage	0-6V	0-8V	0-12.5V	0-15V	0-20V	0-30V	0-40V	0-50V
Current	0-200A	0-18A	0-120A	0-100A	0-76A	0-50A	0-38A	0-30A

Model	PSU 60-25	PSU 80-19	PSU 100-15	PSU 150-10	PSU 300-5	PSU 400-3.8	PSU 600-2.6
Channel	1	1	1	1	1	1	1
Power	1500W	1520W	1500W	1500W	1500W	1520W	1560W
Voltage	0-60V	0-80V	0-100V	0-150V	0-300V	0-400V	0-600V
Current	0-25A	0-19A	0-15A	0-10A	0-5A	0-3.8A	0-2.6A

Programmable Switching DC Power Supply



PSB-2400L/PSB-2400L2 (Low Voltage)
PSB-2800L/PSB-2800LS

- * Output Voltage Rating:0~80V, Output Power Rating:400W~800W
- * Constant Power Output for Multi-Range (V & I) Operation
- * Series and Parallel Operation for Low Voltage Models
- * 90 Degree Angle Rotatable Control Panel
- * Sequence Function Edited by PC will be controlled Through Power Supply Interfaces
- * Standard Interface:RS-232C/USB/Analog Control Interface
- * Optional Interface:GPIB *PSB-2800LS (Booster Unit) it could be used with PSB-2800L Only.

Model Number	PSB-2400L	PSB-2800L	PSB-2400L2	PSB-2800LS
Number of Channel	1	1	2	NA
Output Power	400W	800W	800W	800W
Output Voltage	0~80V	0~80V	0~80V x 2CH	80V
Output Current	0~40A	0~80A	0~40A x 2CH	80A

Programmable Switching DC Power Supply



PSB-2400H/PSB-2800H (High Voltage)

- * Output Voltage Rating:0~800V,Output Power Rating:400W~800W
- * Constant Power Output for Multi-Range (V & I) Operation
- * Parallel Operation (2 Units in Parallel Maximum)
- * 90 Degree Angle Rotatable Control Panel
- * Sequence Function Edited by PC will be controlled Through Power Supply interfaces
- * Standard Interface:RS-232C/USB/Analog Control Interface
- * Optional Interface:GPIB

Model Number	PSB-2400H	PSB-2800H
Number of Channel	1	1
Output Power	400W	800W
Output Voltage	0~800V	0~800V
Output Current	0~3A	0~6A

Fanless Multi-range DC Power Supply



PFR-100L/100M

- * Constant Power Output for Fivefold Multi-Range(V&I)Operation
- * Natural Convection Cooling Design(Fanless Structure)
- * Preset Memory Function & Output ON/OFF Delay Function
- * CV, CC Priority Mode & Bleeder Circuit Control
- * Adjustable Slew Rate For Voltage and Current
- * Protection : OVP, OCP, AC FAIL and OTP
- * Support Front Panel and Rear Panel Output
- * Built-in USB and RS-232/485 Interface Optional LAN+GPIB
- * Web Server Monitoring and Control
- * External Analog Control and Monitor Function

Model	PFR-100L	PFR-100L-GL	PFR-100M	PFR-100M-GL
Power	100W	100W	100W	100W
Voltage	50V	50V	250V	250V
Current	10A	10A	2A	2A

Programmable Switching DC Power Supply



PSH-Series

- * Wide Input Voltage Range and High Power Factor (P.F)
- * High Efficiency and High Power Density
- * Constant Voltage and Constant Current Operation
- * Over Voltage , Over Current and Over Temperature Protection
- * Self-Test and Software Calibration
- * Output ON/OFF Control
- * Low Ripple and Noise
- * LCD Display
- * Built-in Buzzer Alarm
- * Standard Interface : RS-232C
- * Optional Interface : GPIB (IEEE-488.2)
- * LabVIEW Driver

Programmable Switching DC Power Supply



PSP-Series

- * 3 Step Fan Speed Control
- * LCD Display
- * Output ON/OFF Control
- * OVL/OCL/OTP/OPL Protection
- * Normal, +% & -% Output Operation Key
- * High Efficiency and High Power Density
- * Standard : RS-232C
- * Optional European Type Jack Terminal

Model	PSP-603	PSP-405	PSP-2010
Voltage	0 ~ 60V x 1	0 ~ 40V x 1	0 ~ 20V x 1
Current	0 ~ 3.5A x 1	0 ~ 5A x 1	0 ~ 10A x 1

Switching DC Power Supply

CE



SPS-1230/1820/2415/3610/606

- * Two Digital Panel Meters
- * 0.01 % High Regulation
- * Constant Voltage and Constant Current Operation
- * High Efficiency
- * High Power Density
- * Overload and Reverse Polarity Protection

Model	SPS-1230	SPS-1820	SPS-2415	SPS-3610	SPS-606
Voltage	12V	18V	24V	36V	60V
Current	30A	20A	15A	10A	6A

Multiple Output Dual Range DC Power Supply

CE



SPD-3606 (Switching Type)

- * Three Independent, Isolated Output
- * CH1/CH2 : Dual Range Output of 30V/6A or 60V/3A to Cover Wide Application
- * CH3 Adjustable Output : 0.1~5V/3A
- * High Efficiency Power Conversion (Up to 25% then Traditional Power Supply)
- * Remote Control Output On/Off
- * OVP/OTP
- * Fully Safety Design: Reverse Polarity, CH3 Overload Protection, Safe Output Setting, CC/CV Mode
- * Voltage/Current protection Knob (Option)

Source Measure Unit

CE



NEW 台灣精品
TAWAN EXCELLENCE

GSM-20H10

- * Maximum Output $\pm 210V/\pm 1.05A/22W$
- * Built-in 4 Sequence Output Modes (Stair, Log, SRC-MEM, Custom), up to 2500 Points
- * OVP /OTP Protection Function
- * 0.012% Basic Measure Accuracy with 6½-digit Resolution
- * Variable Sampling Speed
- * SDM (Source Delay Measure) Cycle
- * 2-, 4-, and 6-wire Remote V-source and Measure Sensing
- * Variable Display Digits & Built-in Limit Function
- * Built-in 5 Calculation Functions & Built-in RTC Clock
- * 4.3" TFT LCD, Digital Number Keyboard
- * Interface: RS-232, USBTMC, LAN, GPIB (Optional)

Programmable High Precision DC Power Supply

CE



PPH-1503/1503D/1506D/1510D

- * 3.5 inch TFT LCD Display
- * External Relay On/Off Control
- * Front and Rear Panel Output Terminal
- * Key Lock Function & 5 sets of Preset Memory Including Power Output On/Off States
- * High Speed Transient Response Time < 40us within 100mV (for rear output) ; < 80us within 20mV
- * OVP, OCP and OTP Protection
- * PC Remote Control Interface (Standard): USB/GPIB/LAN

Model	PPH-1503	PPH-1503D	PPH-1506D	PPH-1510D
Channel	CH1	CH1	CH2	CH1
Power	45W	45W	18W	45W
Voltage	0-15V or 0-9V	0-15V or 0-9V	0-12V	0-12V
Current	0-3A or 0-5A	0-3A or 0-5A	0-1.5A	0-3A or 0-5A

Programmable High Precision DC Power Supply

CE



台灣精品
TAWAN EXCELLENCE

PPX-Series

- * C.V./C.C Priority Function
- * 4 Ranges of Current Measurement (min. resolution 0.1µA) and 2 Ranges of Voltage Measurement (min. resolution 0.1mV)
- * Data Log Function (sample range: 0.1~999.9 Sec/Over10 giga record data)
- * Test Sequence Function
- * Voltage Remote Sense Function
- * Support Temperature Measurement of K-type Thermocouple
- * Interface: USB, LAN, RS-232, RS-485, Analog Control; Opt: GPIB

Model	PPX-1005	PPX-2002	PPX-2005	PPX-3601	PPX-3603	PPX-10H01
Power	50W	40W	100W	36W	108W	100W
Voltage	10V	20V	20V	36V	36V	100V
Current	5A	2A	5A	1A	3A	1A

Single Channel Programmable DC Power Supply

CE



NEW

GPP-3610H/7250

- * GPP-3610H: 36V/10A; GPP-7250: 72V/5A; 4.3" TFT LCD Display
- * Programming Resolution: 1mV/0.2mA (GPP-3610H); 2mV/0.2mA (GPP-7250)
- * Readback Resolution: 0.1mV/0.1mA & Low Ripple Noise: $\leq 1mVrms/\leq 2mArms$
- * Transient Response Time: $\leq 100\mu s$ & Load Function (CC, CV, CR Mode)
- * Utilizes Hardware to Realize Over Voltage Protection/Over Current Protection/Over Temperature Protection
- * Delay Function/Output Monitoring Function/Output Recorder Function
- * Supports Setting Value, Measurement Value and Output Waveform Display
- * Sequential Output Function and 8 Built-in Template Waveforms
- * The Output Recorder Function Records the Output Voltage & Current Parameters With a Minimum Recording Interval of 1 Second
- * Sequence/Delay/Recorder/Panel Setting Conditions Respectively Provide 10 Sets of Internal Storage Memory
- * Intelligent Temperature-controlled Fan Effectively Reduces Noise
- * Standard Interface: RS-232, USB, Ext I/O
- * Optional Interface (Manufacturer Installed Only): LAN, GPIB+LAN

Multi-output Programmable DC Power Supply

CE



GPP-X323 Series

- * Load Function (CC, CV, CR Mode)
- * Setting/Read back Resolution: 1mV/0.1mA; 0.1mV/0.1mA
- * Low Ripple Noise: $\leq 350\mu Vrms/\leq 2mArms$
- * Transient Response Time: $\leq 50\mu s$
- * Sequential Output Function, Built-in 8 Template Waveforms
- * Output Recorder Function, Minimum Interval of 1 Second
- * Standard: RS-232, USB, Ext I/O
- * Optional: LAN, GPIB+LAN

Model	GPP-1326	GPP-2323	GPP-3323	GPP-4323
Channel	CH1	CH1	CH2	CH1
Voltage	0-32V	0-32V	0-32V	1.8/2.5/3.3/5V
Current	0-6A	0-3A	0-3A	5A

Triple-channel Programmable DC Power Supply

CE



NEW 台灣精品
TAWAN EXCELLENCE

GPP-3060/6030/3650

- * Over Current Protection/Over Temperature Protection
- * Delay Function/Output Monitoring Function/Output Recorder Function
- * Supports Setting Value, Measurement Value and Output Waveform Display
- * Sequential Output Function and Built-in 8 Template Waveforms
- * The Output Recorder Function Records the Output Voltage & Current Parameters with a Minimum Recording Interval of 1 Second
- * Provides 10 Sets of Memory for Each Sequence/Delay/Recorder/Panel Setting Condition
- * Supports a USB (Type A) Output Terminal
- * Intelligent Temperature Control Fan Effectively Reduces Noise
- * Standard: RS-232, USB, LAN, Ext I/O; Optional (manufacturer installed only): GPIB

Model	GPP-3060			GPP-6030			GPP-3650		
Channel	CH1	CH2	CH3	CH1	CH2	CH3	CH1	CH2	CH3
Voltage	0-30V	0-30V	1.8/2.5/3.3/5V	0-60V	0-60V	1.8/2.5/3.3/5V	0-36V	0-36V	1.8/2.5/3.3/5V
Current	0-6A	0-6A	5A	0-3A	0-3A	5A	0-5A	0-5A	5A

Multiple Output Programmable Linear DC Power Supply

CE



GPD-2303S/3303S/4303S/3303D

- * Digital Panel Control
- * User-Friendly Operation, Coarse/Fine Volume Control
- * Key-Lock & Warning Buzzer
- * Tracking Series and Parallel Mode
- * Smart Cooling Fan Achieving Low Noise
- * Display Resolution: 1mV/1mA (GPD-2303S/3303S/4303S) 100mV/10mA (GPD-3303D)
- * Standard Interface: USB * Output ON/OFF
- * 4 Sets Save/Recall

Model	GPD-2303S		GPD-3303S		GPD-4303S		GPD-3303D		
Channel	CH1	CH2	CH1	CH2	CH1	CH2	CH1	CH2	CH3
Voltage	0-30V	0-30V	0-30V	0-30V	0-30V	0-30V	0-5V	0-5V	0-5V
Current	0-3A	0-3A	0-3A	0-3A	0-3A	0-3A	0-3A or 0-1A	0-1A	0-3A

Programmable Dual-Range DC Power Supply



PSM-Series (Linear Type)

- * High Resolution: 1mV/1mA
- * 0.01% Load/Line Regulation, 350µVrms Ripple
- * Auto Step Running with timer Setting and 100 Sets Memory
- * Safety Design: OVP, OCP & OTP; Output ON/OFF Control
- * Self-Test and Software Calibration
- * High Visible Vacuum-Fluorescent Display
- * Front and Rear Output Terminal * Labview Driver
- * Standard Interface : RS-232C, GPIB

Model	PSM-2010	PSM-3004	PSM-6003
Low Range	0 ~ 8V/20A	0 ~ 15V/7A	0 ~ 30V/6A
High Range	0 ~ 20V/10A	0 ~ 30V/4A	0 ~ 60V/3.3A

Programmable Linear DC Power Supply



PSS-Series

- * High Resolution 10mV, 1mA
- * Over-Voltage, Over-Current, Over Temperature Protection
- * Intelligent Fan Control
- * Built-In Buzzer Alarm
- * Standard Interface : RS-232C
- * Option Interface : GPIB (IEEE-488.2) * Labview Driver (Unable to Install RS-232C and GPIB Simultaneously)
- * Optional European Jack Type Terminal

Model	PSS-2005	PSS-3203
Voltage	0 ~ 20V x 1	0 ~ 32V x 1
Current	0 ~ 5A x 1	0 ~ 3A x 1

Multiple Output Programmable Linear DC Power Supply



PPE-3323

- * Easy Operation with UP/DOWN Key
- * High Resolution: 10mV, 1mA
- * Over Voltage Protection, Over Current Protection (by Software)
- * 50 Sets Memory
- * Self Test and Software Calibration
- * Auto Step Running With Timer Setting
- * Triple Output
- * Auto Tracking
- * RS-232C Communication
- * High Stability, Low Drift
- * 4 Digit Display
- * IEC Safety Regulation

Multiple Output Programmable Linear DC Power Supply



PPT-1830/3615

- * Easy Operation with UP/DOWN Key
- * High Resolution: 10mV, 1mA
- * Over Voltage Protection, Over Current Protection (PPT-Series by Hardware)
- * 50 Sets Memory, Triple Output, Auto Tracking
- * Self Test and Software Calibration
- * Auto Step Running With Timer Setting
- * FRONT/REAR Output and Sense Switch Selectable
- * Auto Series and Parallel Operation
- * IEEE-488.2 and SCPI Compatible Command set
- * GPIB Standard Interface & LabVIEW Driver Software
- * High Stability, Low Drift, 4 Digit Display
- * IEC Safety Regulation

Multiple Output Programmable Linear DC Power Supply



PST-3201/3202

- * Digitized Programmable Interface
- * High Resolution 10mV, 1mA
- * 192 x 128 LCD Display, Simultaneously Shows Settings and Measuring Result
- * Over-Voltage, Over-Current, Over Temperature Protection
- * Intelligent Fan Control (Changes by Output Power)
- * 100 Sets Memory
- * Auto Step Running With Timer Setting
- * Auto Series and Parallel Function
- * LabVIEW Driver
- * Standard Interface : RS-232C
- * Optional Interface : GPIB (IEEE-488.2)
- * Optional European Jack Type Terminal

Triple Output Linear DC Power Supply



NEW

GPE-3060/6030

- * 3 Independent Isolated Outputs
- * 4.3 Inch LCD Display
- * CH1/CH2 Output: 30V/6A (GPE-3060)
- * CH1/CH2 Output: 60V/3A (GPE-6030)
- * CH3 Output: 5V/5A
- * Key Lock Function
- * Output On/off
- * OVP (Over Voltage Protection)
- * Read Back Resolution: 30mV/10mA
- * Remote control (Output ON/OFF)
- * Setting Resolution: 10mV/1mA
- * Tracking Series And Parallel Operation

Multiple Output Linear DC Power Supply



GPE-X323 Series

- * Setting and Read back Resolution : 100mV/10mA
- * 1,2,3 and 4 Independent Isolated Output
- * 4.3 inch Display With Set View Function
- * Output On/Off Switch
- * Tracking Series and Parallel Operation
- * Remote Control Function in Rear Panel
- * Key Lock Function

Model	GPE-1326	GPE-2323	GPE-3323			GPE-4323			
Channel	CH1	CH1 CH2	CH1 CH2 CH3	CH1 CH2 CH3 CH4					
Output Voltage	0-32V	0-32V/0-32V	0-32V/0-32V/5.0V	0-32V/0-32V/0-5V/0-15V					
Output Current	0-6A	0-3A/0-3A	0-3A/0-3A/5A	0-3A/0-3A/0-1A/0-1A					
Series Operation	-	0-64V	0-64V	0-64V					
Parallel Operation	-	0-6A	0-6A	0-6A					

Multiple Output Linear DC Power Supply



GPS-2303/3303/4303

- * 2, 3 and 4 Independent Isolated Output
- * 0.01% Load and Line Regulation * Low Ripple and Noise
- * Tracking Operation and Auto Series/Parallel Operation
- * Output Voltage and Current Setting When Output Disable (Except for GPS-2303)
- * Fan Speed Control Circuit to Minimize Fan Noise

Model	GPS-2303			GPS-3303			GPS-4303				
Channel	CH1	CH2	CH3	CH1	CH2	CH3	CH1	CH2	CH3	CH4	
Voltage	0 ~ 30V	0 ~ 30V	5V Fixed	0 ~ 30V	2.2 ~ 5.2V	8 ~ 15V	0 ~ 3A	0 ~ 3A	3A Max.	0 ~ 3A	1A Max.
Current	0 ~ 3A	0 ~ 3A	3A Max.	0 ~ 3A	1A Max.	1A Max.	0 ~ 60V	0 ~ 60V	-	-	
Tracking Series Voltage	0 ~ 60V	0 ~ 60V	-	0 ~ 60V	-	-	0 ~ 6A	0 ~ 6A	-	-	
Tracking Parallel Current	0 ~ 6A	0 ~ 6A	-	0 ~ 6A	-	-	-	-	-	-	

Triple Output Linear DC Power Supply



GPC-3060D/6030D

- * Triple Output & Auto Tracking
- * Auto Series and Parallel Operation
- * Constant Voltage and Constant Current Operation
- * Low Ripple and Noise & 5V, 3A Fixed Output
- * Internal Select for Continuous or Dynamic Load
- * Overload and Reverse Polarity Protection
- * 3 1/2 Digits 0.5" LED Display

Model	GPC-6030D	GPC-3060D
Power	375W	375W
Series	120V 3A	60V 6A
Parallel	60V 6A	30V 12A

Linear DC Power Supply

CE



GPR-H Series

- * 0.01% High Regulation
- * Constant Voltage and Constant Current Operation
- * Internal Select for Continuous or Dynamic Load
- * Low Ripple and Noise & 3 1/2 Digit 0.5" LED Display
- * Overload and Reverse Polarity Protection
- * Internal Select for Continuous or Dynamic Load (for GPR-3510HD/GPR-6060D/GPR-7550D)

Model	GPR-0830HD	GPR-1820HD	GPR-3510HD	GPR-6060D
Power	240W	360W	350W	360W
Volts	0 ~ 8V	0 ~ 18V	0 ~ 35V	0 ~ 60V
Amps	0 ~ 30A	0 ~ 20A	0 ~ 10A	0 ~ 6A

Model	GPR-7550D	GPR-11H30D	GPR-30H10D
Power	375W	330W	300W
Volts	0 ~ 75V	0 ~ 110V	0 ~ 300V
Amps	0 ~ 5A	0 ~ 3A	0 ~ 1A

Linear DC Power Supply

CE



GPR-M Series

- * 0.01% High Regulation
- * Constant Voltage and Constant Current Operation
- * Internal Select for Continuous or Dynamic Load
- * Low Ripple and Noise
- * Overload and Reverse Polarity Protection
- * 3 1/2 Digit 0.5" LED Display

Model	GPR-1810HD	GPR-3060D	GPR-6030D
Power	180W	180W	180W
Output Volts	0 ~ 18V	0 ~ 30V	0 ~ 60V
Output Amps	0 ~ 10A	0 ~ 6A	0 ~ 3A

Linear DC Power Supply

CE



GPS-Series

- * Light and Compact Design
- * 0.01% High Regulation
- * Constant Voltage and Constant Current Operation
- * Remote Control for External Programmability
- * Internal Select for Continuous or Dynamic Load
- * Low Ripple and Noise
- * Overload and Reverse Polarity Protection
- * Series or Parallel Operation
- * Optional European Type Jack Terminal (for GPS-3030D/GPS-3030DD)

Model	GPS-1830D	GPS-1850D	GPS-3030D	GPS-3030DD
Power	54W	90W	90W	90W
Output Volts	0 ~ 18V	0 ~ 18V	0 ~ 30V	0 ~ 30V
Output Amps	0 ~ 3A	0 ~ 5A	0 ~ 3A	0 ~ 3A

High-Performance AC/DC Power Supply

CE



ASR-6000 Series

NEW

- * 4U, 6kVA Output, High Power Density Design
- * Supports Single/Three-Phase AC Input
- * AC Single/Three-Phase Output Modes : 1P2W, 1P3W, 3P4W
- * AC Each Phase Can Independently Output in 3P mode
- * Capable of Executing Balanced/Unbalanced AC Three-phase Output
- * Output Impedance Setting Function
- * Voltage/Current Monitor Output
- * Adjustable Voltage Rising Time
- * Supports Web Control and Data Acquisition Functions

Model	ASR-6450	ASR-6600
AC Input Voltage	Single/Three Phase 200 Vac to 240 Vac $\pm 10\%$	
AC Output Voltage	Phase Voltage 0~175V/0~350V Line Voltage 0~700V	
AC Output Current	1P2W 45A/22.5A/1P3W & 3P4W:15A/7.5A 1P2W 60A/30A/1P3W & 3P4W:20A/10A	
Output Frequency	2000Hz	2000Hz
Rated Output Power	1P2W~4.5kVA/1P3W~3kVA/3P4W~4.5kVA	1P2W~6kVA/1P3W~4kVA/3P4W~6kVA
DC Output Voltage	-250.0 V ~ +250.0 V / -500.0 V ~ +500.0 V	

Programmable AC/DC Power Source

CE



ASR-3000 Series

- * Measurement Items: Vrms, Vavg, Vpeak, Irms, IpkH, Iavg, P, S, Q, PF, CF
- * Sequence and Simulation Function (Up to 10 sets)
- * Remote Sensing Capability
- * OCP, OPP, OTP, AC Fail Detection and Fan Fail Alarm
- * Support Arbitrary Waveform Function
- * Customized Phase Angle for Output On/Off
- * Interface (std.): USB, LAN, RS-232, GPIB

Model	ASR-3200	ASR-3300	ASR-3400	ASR-3400HF
Output Voltage	0~400Vrms/ 0~570Vdc	0~400Vrms/ 0~570Vdc	0~400Vrms/ 0~570Vdc	0~400Vrms/ 0~570Vdc
Output Current	20/10A	30/15A	40/20A	40/20A
Power Rating	2000VA	3000VA	4000VA	4000VA
Output Frequency	1.00Hz~999.9Hz	1.00Hz~999.9Hz	1.00Hz~999.9Hz	1.00Hz~5000Hz

Programmable AC/DC Power Source

CE



ASR-2000 Series

- * Measurement Items: Vrms, Vavg, Vpeak, Irms, IpkH, Iavg, P, S, Q, PF, CF
- * Voltage and Current Harmonic Analysis (THDv, THDi)
- * Customized Phase Angle for Output On/Off
- * Remote Sensing Capability
- * OVP, OCP, OPP, OTP, AC Fail Detection and Fan Fail Alarm
- * Interface: USB, LAN (std.); RS-232+GPIB (opt.)
- * Sequence and Simulation Function (up to 10 sets)

Model	ASR-2050/2050R	ASR-2100/2100R
Output Voltage	0~350Vrms/0~2500Vdc	0~350Vrms/0~2500Vdc
Output Current	5/2.5A	10/5A
Power Rating	500VA	1000VA
Output Frequency	1.00Hz ~ 999.9Hz	1.00Hz ~ 999.9Hz

Programmable Linear AC Power Source

CE



APS-7050/7100

- * 4.3-inch TFT-LCD
- * Output Capacity: APS-7050(500VA, 310Vrms, 4.2Arms); APS-7100(1000VA, 310Vrms, 8.4Arms) Output Augmentation by Options (0~600Vrms/45~999.9Hz)
- * Measurement and Test Functions Include VOLT, CURR, PWR, SVA, IPK, IPKH, FREQ, PF, CF
- * Support a Small AC Current Measurement 2mA~35A, Min. Revolution 0.01mA (APS-7050&APS-7100)
- * Reverse Current Alarm Function
- * Automatic Execution of Sequence, Simulate, Program mode and Output Function when the Power is on

Model	APS-7050	APS-7100
Power Rating	500VA	1000VA
Output Voltage	0 ~ 310.0Vrms	
Output Frequency	45.00 ~ 500.0Hz	

Programmable Linear AC Power Source

CE



APS-7050E/7100E (Without Interface)

- * 4.3-inch TFT-LCD
- * Output Capacity: APS-7050E(500VA, 310Vrms, 4.2Arms); APS-7100E(1000VA, 310Vrms, 8.4Arms)
- * Measurement and Test Functions Include VOLT, CURR, PWR, IPKH, FREQ, PF
- * Support a Small AC Current Measurement 2mA~35A, Min. Revolution 0.01mA
- * Reverse Current Alarm Function
- * Automatic Execution of Sequence, Simulate, Program mode and Output Function when the Power is on

Model	APS-7050E	APS-7100E
Power Rating	500VA	1000VA
Output Voltage	0 ~ 310.0Vrms	
Output Frequency	45.00 ~ 500.0Hz	

Programmable Linear AC Power Source

CE



APS-7300
APS-7200

- * 4.3-inch TFT-LCD
- * Output Capacity: APS-7200(2000VA, 310Vrms, 16.8Arms); APS-7300(3000VA, 310Vrms, 25.2Arms); Output Augmentation by Options (0~600Vrms/45~999.9Hz)
- * Measurement and Test Functions Include VOLT, CURR, PWR, SVA, IPK, IPKH, FREQ, PF, CF
- * Reverse Current Alarm Function
- * Automatic Execution of Sequence, Simulate, Program mode and Output Function when the Power is on

Model	APS-7300	APS-7200
Power Rating	3000VA	2000VA
Output Voltage	0 ~ 310.0Vrms	
Output Frequency	45.00 ~ 500.0Hz	



DAQ-9600 Data Acquisition System

LCR-1100/1010 Handheld LCR Meter

GLC-10000 Leakage Current Tester

GPM-8320/8330 Digital Power Meter

DIGITAL MULTIMETERS/LCR METERS/SAFETY TESTERS/OTHER METERS

The GW Instek Basic Test & Measurement Instruments can be divided into 4 groups: Digital Meters, LCR Meters, Safety Testers and Other Application T&M Instruments.

For Safety testing, GPT-10000 Series safety analyzer and GPT-9000 Series safety testers provide you with a safe and quick measurement for AC/DC withstanding voltage tests, insulation resistance tests, and ground bond tests. GPT-9500 Series multi-channel hipot tester is built-in 8 channels scan for multiple testing points requirement. GLC-10000 (Medical / General equipment) & GLC-9000 (General equipment) leakage current testers support all the major leakage current test standards.

In the Digital Meter group, we provide 6 1/2 digit, 5 1/2 digit and 4 3/4 digit (50000 counts) benchtop multimeters, 4 1/2 and lower digit handheld multimeters.

LCR Meter includes two series, LCR-8200(A) Series and LCR-6000 Series. Depending on the model, these series feature frequency of 2kHz ~ 50MHz, and accuracy of 0.05% ~ 0.1%.

In order to provide a complete “one stop shopping” solution, D.C. milliohm meters, Digital power meter, 80V/300V Battery Meter, 1.3GHz ~ 2.7GHz high frequency counter, automatic distortion meter and A.C. millivolt meters are also provided in this product line of Other application T&M instruments.

PRODUCTS

- Digit Dual Measurement Multimeter
- Digital Multimeter
- Mini Clamp Meter
- LCR Meter
- Handheld LCR Meter
- Electrical Safety Analyzer
- Electrical Safety Tester
- Multi-Channel Hipot Tester
- AC Ground Bond Tester
- Leakage Current Tester
- Data Acquisition System
- Digital Power Meter
- D.C. Milli-ohm Meter
- Battery Meter
- Automatic Distortion Meter
- Intelligent Counter

AC/DC/IR/GB Electrical Safety Analyzer

CE



GPT-15000 Series

- * 500VA AC Test Capacity(short circuit current>200mA)
- * 7" TFT LCD
- * Comply with IEC 61010-2-034 Design Requirement
- * Controllable Ramp-up & Ramp-down Time
- * Statistics & Analysis Function
- * Sweep Function for DUT Characteristic Analysis
- * Internal Storage and USB Storage Available
- * Barcode Function Available & Setting Data Export/Import

Function	Output Capacity	AC	DC	IR	GB	Continuity	Rear Output
GPT-15001	500VA	✓				✓	✓
GPT-15002	500VA	✓	✓			✓	✓
GPT-15003	500VA	✓	✓	✓		✓	✓
GPT-15004	500VA	✓	✓	✓	✓	✓	✓

AC/DC/IR/GB Electrical Safety Analyzer

CE



GPT-12000 Series

- * 200VA AC Test Capacity
- * 7" LCD Color Display
- * Capacitive Load Testing Capability Up to 47μF
- * Controllable Ramp Up & Ramp Down Time
- * Statistic Function
- * Testing Time Starting From 0.3s
- * Provide USB Flash Drive Storage Function
- * Universal Power Input

Function	Output Capacity	AC	DC	IR	GB	Continuity	Rear Output
GPT-12001	200VA	✓				✓	✓
GPT-12002	200VA	✓	✓			✓	✓
GPT-12003	200VA	✓	✓	✓		✓	✓
GPT-12004	200VA	✓	✓	✓	✓	✓	✓



AC/DC/IR/GB Electrical Safety Tester

CE



GPT-9800/9900 Series

- * 200VA/500VA AC Test Capacity
- * 240 x 64 Ice Blue Dot Matrix LCD
- * Function Key for Quick Selecting
- * Controllable Ramp-up Time
- * Zero Crossing Turn-on Operation
- * True RMS Current Measurement
- * High Intensity Flash for Caution & Status Indication
- * High Resolution : 1μA for Measuring Current, 2V for Setting Voltage
- * PWM Switching Amplifier to Enhance the Power Efficiency and Reliable Testing
- * Max. 100 Memory Block for Test Condition(Step) Setting, and Each Step Can be Named Individually
- * Safety Interlock Function
- * Manual/Auto Mode
- * Interface : RS-232C, USB Device, Signal I/O and GPIB(Optional)
- * Rear Output Available

Multiplex Scanner Box

CE

Patent No.ZL201420282101.8



GSB-01/02

- * Model : GSB-01 (8CH High Voltage Scanner Box), GSB-02 (6CH High Voltage and 2CH Ground Bond Scanner Box)
- * Multi-channel Outputs for Withstanding Voltage, Insulation Resistance, Ground Bond Tests
- * High-intensity LED for Channel, Status & Judgment Indications
- * Front & Rear Input Connector Design is Suitable for the GPT-9800/9900/9900A Series
- * A Maximum of 4 Scanner Boxes (32 CH) can be Connected to One GPT-9800/9900/9900A Series

AC/DC Withstanding Voltage/Insulation Resistance Tester

CE



GPT-9600 Series

- * 100VA AC Test Capacity
- * 240 x 48 Ice Blue Dot Matrix LCD
- * True RMS Current Measurement
- * ARC Detection
- * Zero Crossing Turn-on Operation
- * PWM Switching Amplifier to Enhance the Power Efficiency and Reliable Testing
- * Automatically Switching Input Source for World-wide Input Voltage
- * Light Design and Easy to Operation

Multi-Channel Hipot Tester

CE



GPT-9500 Series

- * 150VA AC Test Capacity
- * 3 in 1 Tester : AC, DC, IR
- * Built-in 8 Channel Scanner
- * 480 x 272 Color TFT LCD
- * Test Parameter Export/Import Through USB Host
- * Statistics (counter) Function
- * Insulation Resistance Measurement up to 10GW
- * Open/Short Check (OSC)
- * ARC Detection
- * Multi-language : Traditional/Simplified Chinese, English
- * Interface : RS-232C, USB Host/Device and Signal I/O

AC Ground Bond Tester

CE



GCT-9040

- * AC 40A Ground Bond Tester
- * Measuring Resistance from 1mΩ~650mΩ
- * Connect with the GPT-9800/9900 Series to Become a Multifunctional Test or Simultaneous Test System
- * 240x64 Ice Blue Dot Matrix LCD
- * Function Key for Quick Selecting
- * High Intensity Flash for Caution & Status Indication
- * PWM Switching Amplifier to Enhance the Power Efficiency and Reliable Testing
- * Max. 100 Memory Block for Test Condition Setting
- * Remote Terminal on the Front Panel for "Start" and "Stop" Remote Active
- * Interface : USB Device, Signal I/O and GPIB (optional)

Leakage Current Tester

CE



GLC-10000

- * Suitable for Medical Electrical & General Electrical of Leakage Current Measurement
- * 7" Touch Pane with Color LCD
- * 12 Different Measurement Network to Simulate the Resistance of Human Body Including IEC 60601-1:2020 3.2rd)
- * The Measurement of Maximum Allowable Leakage Current is Up to 50mA
- * External Terminal for Extension MD Connection
- * MD OUT Terminal can be Connected to an Oscilloscope for Convenient Comparison of Measured Waveforms
- * 30 Sets Memories for Test Parameter; 1000 Sets Memories for Measured Data.
- * Test Parameter Export/Import Function Through USB Host
- * USB Storage for Measurement Data/Screen Capture
- * Various Standard Interfaces: RS-232C, USB Host & Device, LAN, Signal I/O and GPIB (Optional)

NEW

Leakage Current Tester

CE



GLC-9000

- * Touch Panel with Color LCD Display
- * 9 Different Measuring Devices to Simulate the Resistance of a Human Body
- * 8 Different Types of Leakage Current
- * Various Leakage Current Measuring Modes : DC/AC/AC+DC/AC Peak
- * Upper & Lower PASS/FAIL Limits
- * Meter Function with SELV/CONV Function
- * 50 Preset Test Conditions Conform to the IEC 60990 ; 30 Memories for Customer Defined
- * Standard Interfaces : RS-232C/GPIB/USB Host & Device/EXT I/O

Data Acquisition System

CE



DAQ-9600

NEW

- * Large 4.3" TFT Color Display
- * 3-slot Mainframe with Built-in 6 ½ Digit DMM
- * Basic 0.0035% DCV Accuracy
- * 5 Selectable Switch Modules
- * Up to DC 600V/AC 400V Voltage Measurement (DAQ-909 Module)
- * Up to 450 Channel/s Scan Rate
- * Up to 100 kilo Points Internal Memory
- * Measures and Converts 14 Different Input Signals:
 - Temperature with Thermocouple, RTDs and Thermistor;
 - DC/AC Volts; 2- and 4-wire Resistance; Frequency and Period;
 - DC/AC Current and Capacitance; Direct Strain and Bridge Strain
- * Command Compatible with the DAQ970A
- * USB Storage Supports to Copy/Log Data in Standalone Operation
- * Interface: Digit I/O, LAN, USB Host/Device and Mini GPIB (Optional)
- * Free PC Software DAQ-Data Logger, Allows Easy Configuration and Control of Tests

6 ½ Digit Dual Measurement Multimeter

CE



GDM-906X Series



- * 6 ½ Digit Display: 1,200,000 Counts
- * 4.3" TFT Graphic LCD
- * DCV Basic Accuracy: 0.0035% (GDM-9061) / 0.0075% (GDM-9060)
- * 12 Measurement Functions: DCV, ACV, DCI, ACI, 2-wire and 4-wire Resistance, Frequency, Period, Diode, Continuity, Temperature and Capacitance
- * Sampling Rate up to 10k SPS (GDM-9061)
- * Dual Measurements to Perform Two Selected Measurement Simultaneously
- * Offer Graphical Capabilities Including Histogram, Bar Meter and Trend
- * Temperature Measurement Support RTD, Thermistor as Well as Thermocouple
- * Standard Interface: USB Host/Device, RS-232C, LAN, Digital I/O
- * Optional Interface: GPIB

6 ½ Digit Dual Measurement Multimeter

CE



GDM-8261A

- * 6 ½ Digit Display
- * DCV Basic Accuracy : 0.0035%
- * Dual Measurement to Perform Two Selected Measurements Simultaneously
- * 11 Measurement Functions & 10 Math Functions
- * Measuring Resolution : 100pA for DCI and 1nA for ACI
- * Temperature Measurement
- * Up to 2,400 rdgs/s Data Transmission Speed
- * Standard Interfaces : USB, RS-232C, Digital I/O
- * Optional Interfaces : GPIB or LAN
- * Optional Scanner Card : SC1A (V ch x 16, I ch x 2)
- * PC Software : Excel ADD-In, LabVIEW Driver

5 ½ Digit Dual Measurement Multimeter

CE



GDM-8351

- * 120,000 Counts, VFD Display * Auto/Manual Selection
- * Dual Measurement/Dual Display
- * The Basic Precision of DC Voltage : 0.12%
- * Selectable Measurement Speeds, the Maximum: 320 Readings/s
- * True RMS (AC, AC+DC) Measurements
- * 12 Different Measurement Functions: AC/DC Voltage, AC/DC Current, AC+DC Voltage/Current, 2W/4W Resistance, Continuity Beeper, Diode Test, Capacitance, Frequency, Temperature
- * Many Auxiliary Functions : Max./Min., REL/REL#, Compare, Hold, dB, dBm, Math (MX+B, %, 1/X)
- * Digital I/O Provides Dual Mode (Standard Compare and User Definition Modes)
- * Standard RS-232C and USB Device Interface (Support USB CDC and USB TMC Modes)

5 ½ Dual Display Digital Multimeter

CE



GDM-8255A

- * GDM-8255A : 199,999 Counts Display
- * VFD Two Colors Display
- * 0.012% DCV Accuracy
- * True RMS (AC, AC+DC)
- * 9 Major Measuring Functions and 10 Advanced Measurement Functions
- * 2W/4W Resistance Measurement
- * High Voltage 1000V and 10A Current Range
- * Standard Interface : RS-232C, USB Device, Digital I/O
- * Free PC Software (DMM-VIEWER), LabVIEW Driver
- * Optional 16+2 Channels Scanner Card

50000 Counts Dual Measurement Multimeter

CE

Patent No. ZL201320125978.1



GDM-8341/8342

- * 50000 Counts Vacuum Fluorescent Display with Two Colors
- * Dual Measurement
- * Fast Measurement Rate Up to 40 readings/s for DCV
- * 0.02% DCV Basic Accuracy
- * Auto/Manual Ranging
- * True RMS (AC, AC+DC)
- * 11 Measurement Functions
- * Max./Min., REL, MX+B, 1/X, Ref %, Compare, Hold, dB, dBm
- * Standard USB Device for Communicating to PC
- * Temperature Measurement (GDM-8342 only)
- * USB Storage for Data Collection (GDM-8342 only)
- * Optional GPIB (factory install for GDM-8342 only)

Dual Display Digital Multimeter

CE



GDM-8245 (50000 Counts)

- * 50000 Counts Display
- * Multi-Function ACV, DCV, ACA, DCA, R, C, Hz, Max/Min, Continuity Beeper, Diode Test, REL, Hold, dBm
- * Dual Display Indicate ACV and Hz, DCV (ACV) and dBm
- * Manual or Auto Ranging
- * 0.03% DCV Accuracy
- * ACV Measuring Frequency Up to 50kHz
- * AC True RMS or AC + DC True RMS

Battery Meter

CE



GBM-3300/3080

- * 3.5" TFT LCD (320x240)
- * Measurement Items : DC Voltage and AC Resistance
 - Voltage measurement : 300V (GBM-3300) or 80V (GBM-3080)
 - Resistance measurement : 0mΩ ~ 3.2kΩ (max.)
- * Basic Accuracy For Voltage Measurement : 0.01%
- * Basic Accuracy For Resistance Measurement : 0.5%
- * Measurement Resolution up to 0.1μΩ and 10μV, Suitable For Single-cell Measurement
- * Independent Go/NoGo Determination Function For Voltage and Resistance Respectively
- * The Judgment Mechanism of Test Lead (Probe) Disconnect/Contact Failure is to Ensure The Measurement Reliability
- * Standard Interfaces: USB Host/Device, RS-232C and Handler

Hand-Held Digital Multimeter

CE

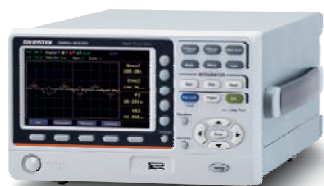


GDM-541/533/532 (Auto/Manual Range)
GDM-531 (Manual Range)

- * 22000 Counts Auto/Manual Ranging (GDM-541)
- * 6000 Counts Auto/Manual Ranging (GDM-533)
- * 9999 Counts Auto/Manual Ranging (GDM-532)
- * 6000 Counts Manual Ranging (GDM-531)
- * Current Measurement up to 20A (GDM-541/533)
- * Temperature Measurement (GDM-533/532)
- * Audible / Visual Alarm when Overload (GDM-541/533/531)
- * True RMS (GDM-541/533/532)
- * USB interface (GDM-541/533)

Digital Power Meter

CE



GPM-8320/8330

NEW

- * 5" TFT LCD
- * Voltage/Current Meter Test Freq. Bandwidth: DC,0.1Hz~100kHz
- * Waveform Display : V (Voltage), I (Current), P (Wattage)
- * Distorted wave Current/Voltage Measurement: Full Range for CF=3, and Half Range for CF=6 (or 6A)
- * Meeting IEC 61000-4-7 Harmonic Measurement (50/60Hz)
- * Wiring Selecting Button (1P3W, 3P3W, 3P4W, 3V3A)
- * Harmonic Measurement & Analysis up to 50 Orders
- * Auto Ranging Function for Integration Mode
- * Screen Capture Through USB Host
- * Provide External Current Sensor Input (EXT1/EXT2)
- * Standard Interface: RS-232C, USB Device/Host, LAN
- * Optional Interface: GPM-DA12-GPIB+Digital I/O (Factory Installed Only)

Digital Power Meter

CE



GPM-8310



- * 5" TFT LCD
- * DC, 0.1Hz ~ 100kHz Voltage/Current Test Bandwidth
- * Two Numerical Display Modes
 - General Mode: Displays 2 Main Test Items+8 Secondary Test Items
 - Simple Mode: Displays the Test Values of 4 Main Test Items
- * Waveform Display: V (voltage), I (current), P (power)
- * Meeting the IEC 61000-4-7 Harmonics Measurement Requirements (50/60Hz)
- * 50th Order of Harmonic Measurement and Analysis
- * Integration Function Supports Automatic Level-changing
- * External Current Sensor Input Terminals (EXT1/EXT2)
- * Standard Interfaces:RS-232C,USB Device/Host,LAN,GPIB
- * Optional Interface:Digital I/O (DA4)

Digital Power Meter

CE



GPM-8213



- * 4" TFT LCD
- * Basic Accuracy : +/- (0.1% of reading + 0.1% of range)
- * Two Data Display Modes
- * Met the requirement of IEC 62301 power measurement
- * Current/Voltage Measurements Reach CF = 3 for Distorted Wave and CF=6 for Half Range
- * Total Harmonic Distortion Measurement
- * W-h Power vs Time Integration Function
- * Front Panel Test Terminal
- * Standard Interfaces : RS-232C, USB Device, LAN

High Frequency LCR Meter

CE



LCR-8200(A) Series

- * Wide Test Frequency:
 - LCR-8200A: DC, 10Hz ~ 50/30/20/10/5MHz
 - LCR-8200: DC, 10Hz ~ 30/20/10/5/1MHz
- * 7" LCD color Display & 0.08% Basic Accuracy
- * Two Curves Sweep Mode
- * Equivalent Circuit Model Analysis (LCR-8200A only)
- * Internal DC Bias Voltage $\pm 12V$
- * USB Storage & ALC Function Available
- * Standard Interfaces : RS-232C, USB Host/Device, LAN, GPIB and Handler
- * Universal Power Input

Precision LCR Meter

CE



LCR-6000 Series

- * 3.5" Color LCD, 5 Models (10Hz~2/20/100/200/300kHz)
- * Consecutive Test Frequency & Basic Accuracy : 0.05%
- * Measuring Speed up to 25ms(Max.)
- * Full Frequency Range or Spot OPEN/SHORT
- * 16 Major/Secondary Parameter Measurement Combinations and Two Additional Monitoring Parameters (Maximum Four Different Parameters Can be Shown Simultaneously)
- * DCR Measurement and Internal D.C. Bias Voltage ($\pm 2.5V$)
- * PASS/FAIL Judgment, Auto Level Control (ALC) Function
- * BIN Function Provides 9BIN and 1AUX, Totally 10 BIN
- * 10 Steps Listed Tests to Select Different Frequency, Voltage and Current Criteria
- * Standard Interface : RS-232C, Handler and USB Storage

Handheld LCR Meter

CE



LCR-1100/1010

NEW

- * 2.8" TFT Touch LCD
- * 50,000 Counts Resolution on Primary and Secondary Display
- * 0.2% Basic Accuracy
- * Six or Eight Selectable Test Frequencies Depends on Model
- * 15 Kinds Measurement Combinations Available
- * Test Level Selectable : AC 0.3V/0.7V/1Vrms and DC +/- 1V
- * Selectable Measurement Speed : Fast 10 Times/s, Slow 2.5 Times/s
- * Auto LCZ Mode for Automatic Component Type Identification and Measurement
- * Data Hold
- * USB-HID/USB-VCOM Interfaces for Remote Communication
- * Software for Data logging is Available

D.C. Milliohm Meter

CE



GOM-804/805

- * 50000 Counts Display
- * TFT 320x240 Color LCD
- * Fast Measurement Rate up to 60 sample/s
- * High Accuracy 0.05%
- * Four-Terminal Measurement
- * Temperature Compensation (TC) Measurement
- * Diode Test
- * Measurement Delay Function
- * Drive Mode: DC+, DC-, Pulsed, PWM, Zero(GOM-805 only)
- * Standard Interface: Handler (D-sub 25P), RS22, USB Device, GPIB(GOM-805 Std./GOM-804 Opt.)

A.C. Millivolt Meter

CE



GVT-427B (2 CH)/GVT-417B (1 CH)

- * 300 μV Full Scale Sensitivity
- * Measures Frequency From 10Hz ~ 1MHz
- * Measures From -70dB ~ +40dB in 12 Ranges
- * Dual Channel (GVT-427B)
- * CE Approved (GVT-417B)

Intelligent Counter

CE



GFC-8270H/8131H

- * GFC-8270H : 0.01Hz ~ 2.7GHz Frequency Range
- * GFC-8131H : 0.01Hz ~ 1.3GHz Frequency Range
- * 10mVrms High Sensitivity
- * Frequency and Period Measurement
- * 100nHz Resolution for 1Hz
- * High Resolution at Both High and Low Frequency
- * Variable Trigger Level Control

This short form catalog introduces the major GW Instek product lines with a brief explanation of each product. For more information, please visit our website: <http://www.gwinstek.com>

DISTRIBUTOR :



Zone Acticentre -Bâtiment H - 156/220
Rue des Famards - CRT2 - CS 10210 - 59273 FRETIN
Tél. 03 20 62 06 80 Télécopie : 03 20 96 95 62
E-mail : contact@dimelco.com

Specifications subject to change without notice.

SF-2024GD1SF_2024-01-2000

Global Headquarters

GOOD WILL INSTRUMENT CO., LTD.

No.7-1, Jhongsing Road, Tucheng Dist., New Taipei City 236, Taiwan
T +886-2-2268-0389 F +886-2-2268-0639
E-mail: marketing@goodwill.com.tw

China Subsidiary

GOOD WILL INSTRUMENT (SUZHOU) CO., LTD.

No. 521, Zhujiang Road, Snd, Suzhou Jiangsu 215011 China
T +86-512-6661-7177 F +86-512-6661-7277

Malaysia Subsidiary

GOOD WILL INSTRUMENT (SEA) SDN. BHD.

No. 1-3-18, Elit Avenue, Jalan Mayang Pasir 3,
11950 Bayan Baru, Penang, Malaysia
T +604-6111122 F +604-6115225

Europe Subsidiary

GOOD WILL INSTRUMENT EURO B.V.

De Run 5427A, 5504DG Veldhoven, THE NETHERLANDS
T +31(0)40-2557790 F +31(0)40-2541194

U.S.A. Subsidiary

INSTEK AMERICA CORP.

5198 Brooks Street Montclair, CA 91763, U.S.A.
T +1-909-399-3535 F +1-909-399-0819

Japan Subsidiary

TEXIO TECHNOLOGY CORPORATION.

7F Towa Fudosan Shin Yokohama Bldg., 2-18-13 Shin
Yokohama, Kohoku-ku, Yokohama, Kanagawa,
222-0033 Japan
T +81-45-620-2305 F +81-45-534-7181

Korea Subsidiary

GOOD WILL INSTRUMENT KOREA CO., LTD.

Room No.503, Gyeonginro 775 (Mullae-Dong 3Ga,
Ace Hightech-City B/D 1Dong), Yeongduengpo-Gu,
Seoul 150093, Korea.
T +82-2-3439-2205 F +82-2-3439-2207

India Subsidiary

GW INSTEK INDIA LLP.

No.2707/B&C, 1st Floor UNNATHI Building,
E-Block, Sahakara Nagar, Bengaluru-560 092. India
T +91-80-6811-0600 F +91-80-6811-0626

GW INSTEK

Simply Reliable



Website



Facebook



LinkedIn