



SYNERGY SOFTWARE

DATA SHEET

SYNERGY SOFTWARE

Synergy is the software platform system to support many current and all future Hanwell hardware and replaces the RadioLog software.

Synergy is a scalable browser based database offering a contemporary browser based management system that retains many of the underlying technical abilities of RadioLog8 but viewable in a more modern SQL format and provides significant additional user benefits.

Developed to give maximum flexibility and control of data and events, Synergy has made significant advances in how, where and when data can be viewed and managed across the widest spectrum of customers from the single site/single user through to multiple site/multiple user situations. Synergy also has both standard and bespoke reporting options to meet the simplest and most complex customer requirements.

Software Features

- Browser based technology with SQL database
- Individual versions tailored to key market sectors: Healthcare, Pharma*, Heritage and Industrial
- Top level pictorial overview of site activity and alarms on start up
- Devices can be added at will with no interruption to logging
- User access management and control via simple permissions process
- Seamlessly supports multiple geographical locations
- Easy navigation to alarms, reporting tools and administration areas
- Easy access to historical data
- Supports all Hanwell current and future hardware
- Option to design additional bespoke reports
- Installation of software on central server removes need to install or update multiple PC's
- Allows flexible grouping of sensors to customise views even across multiple sites
- Variety of alarm features available including email and SMS notifications
- Full history of recorded data available for analysis by users at all times
- Export data files to CSV formats
- Automated reporting directly to PDF format at user defined timescales
- Interactive graphical and tabular data

Benefits

- Gives the user maximum control of how, when and where the data is managed and presented
- Simple to use and to manage and provides instant notification of alarms to relevant personnel
- Assists with national regulatory compliance such as MRHA and 21 CFR Part 11*
- Frees up staff time and eliminates errors by removing manual checking processes
- Improves speed of preventative action with immediate email and SMS alarms
- Generates a complete environmental monitoring solution for multiple parameters in multiple locations
- Easily expandable or changeable system as and when required and with minimal disruption
- Post purchase support available

Part Numbers

W700 - Synergy Basic Software includes 2 sites, 2 sensor groups and 5 user FOC

W702 - Additional 5 users

W703 - Additional 10 users

W704 - Unlock code for unlimited sites and sensor groups

W705 - Synergy OPC Software

W706 - Synergy 21 CFR Part 11 Validated Software

W701 - Synergy 21 CFR Part 11 Software licence

W707 - Synergy 21 CFR Part 11 Qualification documentation

W708 - Synergy 21 CFR Part 11 Hardware blank IQ & OQ document templates

SRC133 - RadioLog to Synergy upgrade

* Synergy Remote Server Hosting is available.

Contact us for more information.

PC Prerequisites

Standalone PC

- Windows 2008 R2
- 4GB RAM (at least)
- 2 x 250GB HDD setup as RAID 1
- 1GB Ethernet
- DVD reader

For full system with Internet access please contact us for further pre-requisites.

Compatible Hardware:

The Synergy software is compatible with all Hanwell Radio and GPRS hardware.

Data Viewing Options

Overview

Customised

Tabular

Graphical

Plan View

Regulatory Assistance

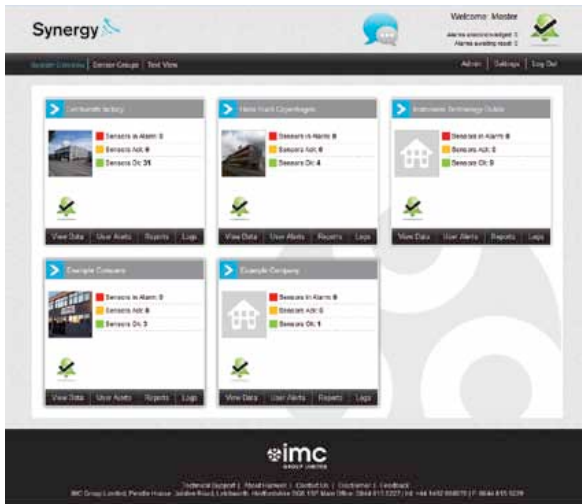
FDA 21 CFR Part 11

And other national regulatory bodies

Disclaimer

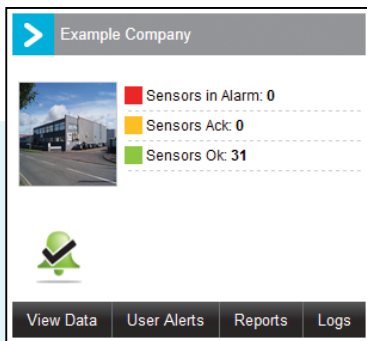
The information contained herein is believed to be reliable. The IMC Group Ltd is not responsible for any incorrect or incomplete information on this datasheet and the information or product may be changed without notice. Customers should obtain and verify the latest relevant information before placing orders for IMC products.

Overview

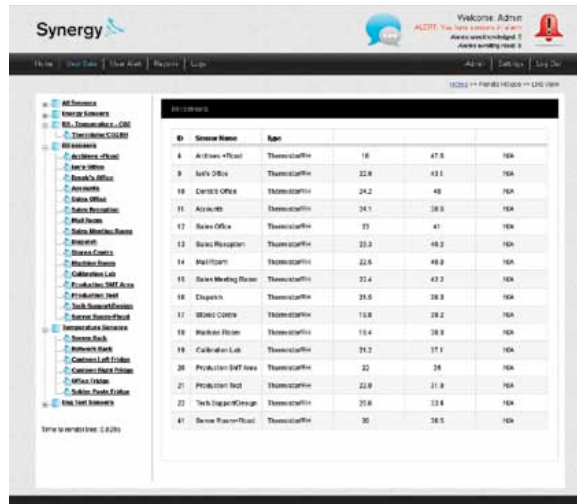


Overview provides users with a quick glance of site activity including alarms, acknowledgments and other sensor data.

Up to 6 sites per page.

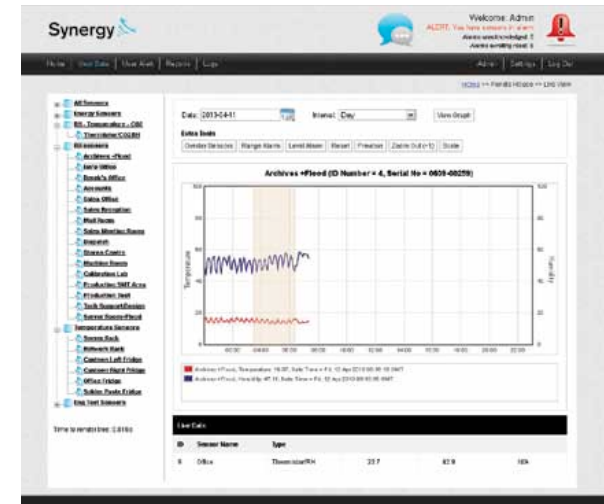


Tabular View



Tabular View provides list of sensors with traffic with real-time data.

Graphical View



Graphical View provides line or bar graph with multiple sensor data overlay options for environmental comparison.

Below: Highlight area of interest on graph to zoom in for detailed information.

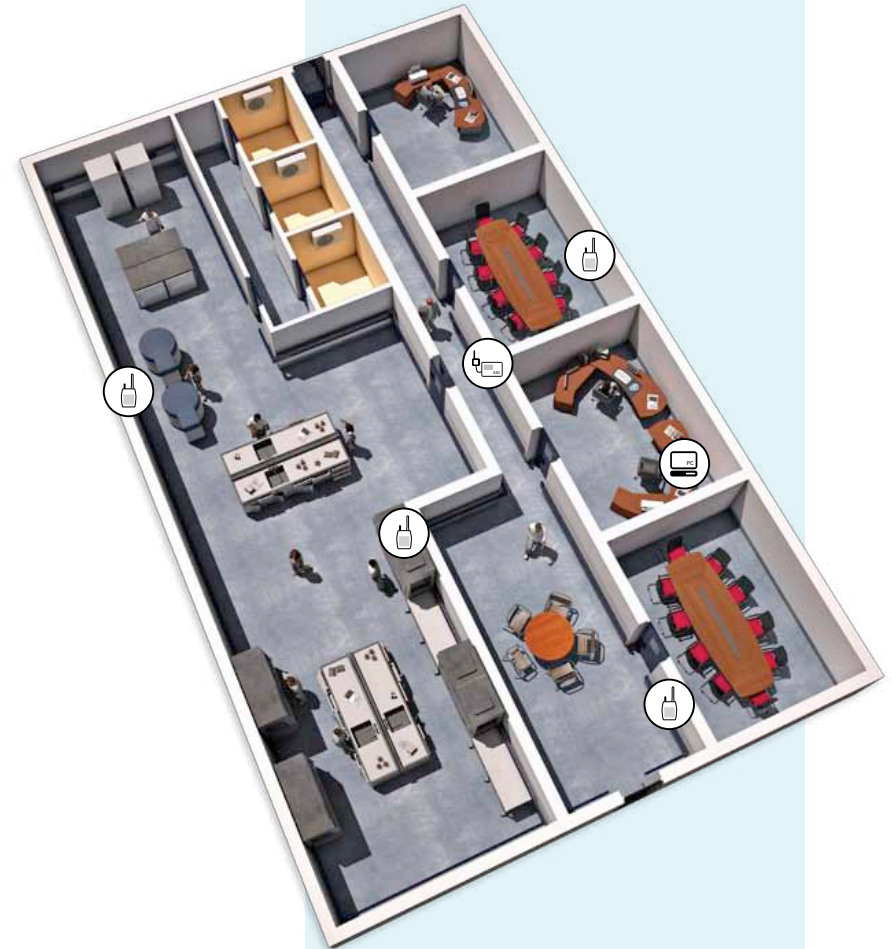
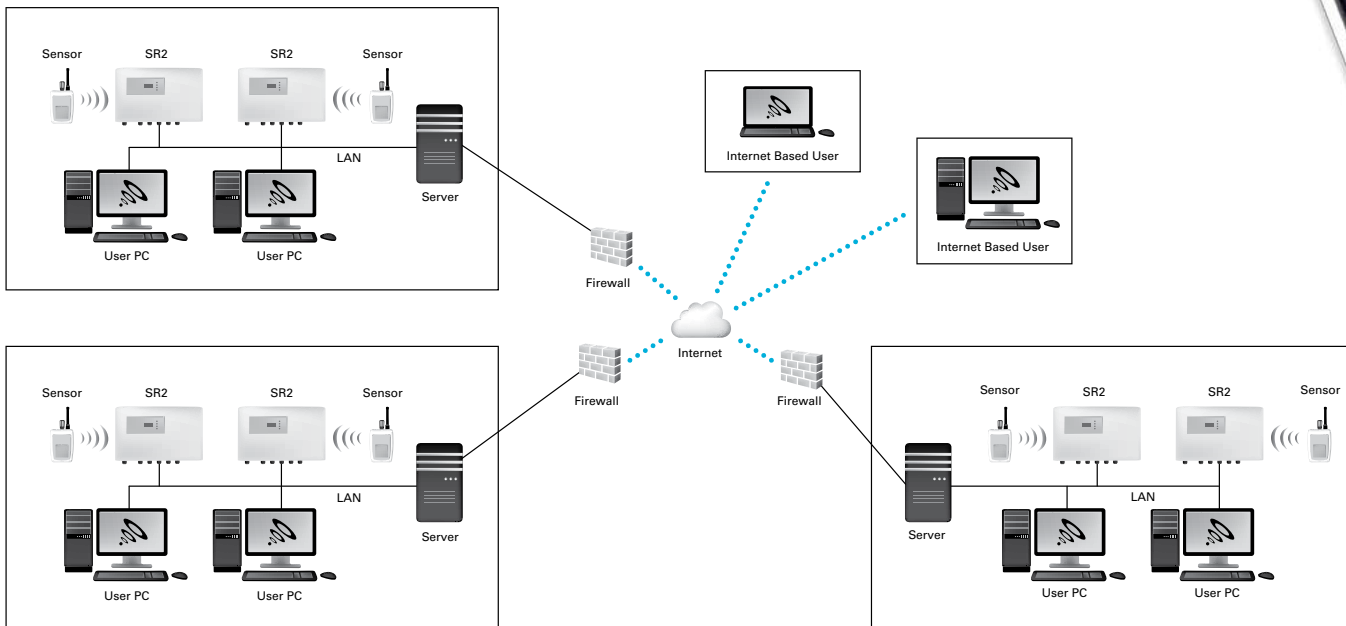


Synergy can access data from local and global locations.

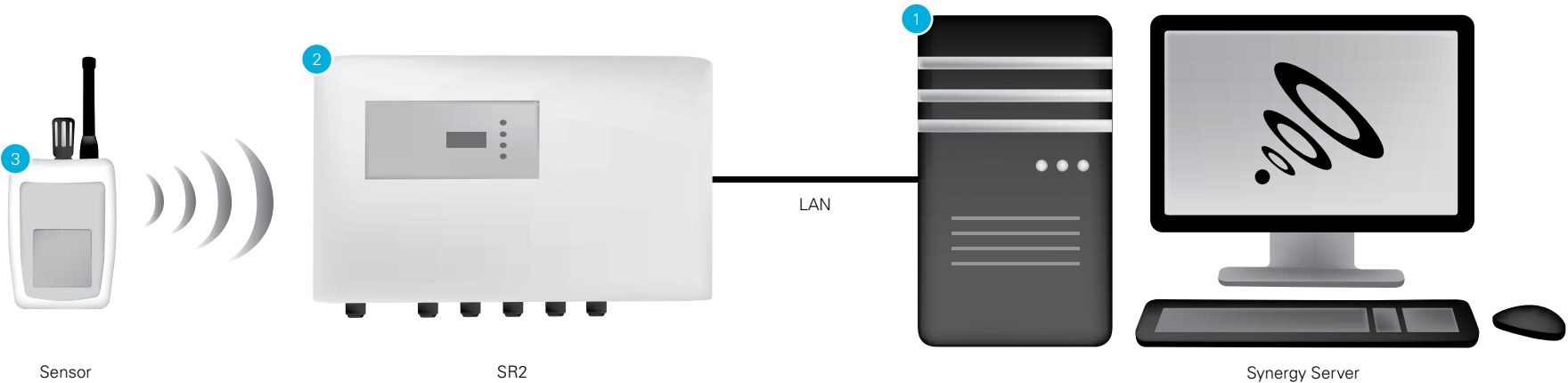
Because synergy has been designed to suit a multitude of requirements, there are many ways that the system can work:

1. Single Site (with or without internet access)
2. Multiple networked sites (with or without internet access)
3. Network site with remote site (with or without internet access)
4. Hosted site (requires internet access)

The schematic below details a typical networked multi-site system with internet access for data transmissions.



Schematic A - Standalone installation with no internet access



1. Synergy Server

Hardware
 Operating System: Windows 2008 R2 SP1
 Memory: 4GB RAM (Minimum)
 Disk Space: 250GB (Raid configuration recommended)
 Network Speed: 1 Gb
 Optical Drive: DVD Reader

Configuration
 SMS Available
 Email Alerts Available

Firewall: No changes required
 IP Address: DHCP
 LAN: Same Sub Net as SR2

Software
 Synergy Server Components
 SR2 Service
 Synergy Management Tools
 Note: Server Speciation should be reviewed as the number of sites and sensors increases.

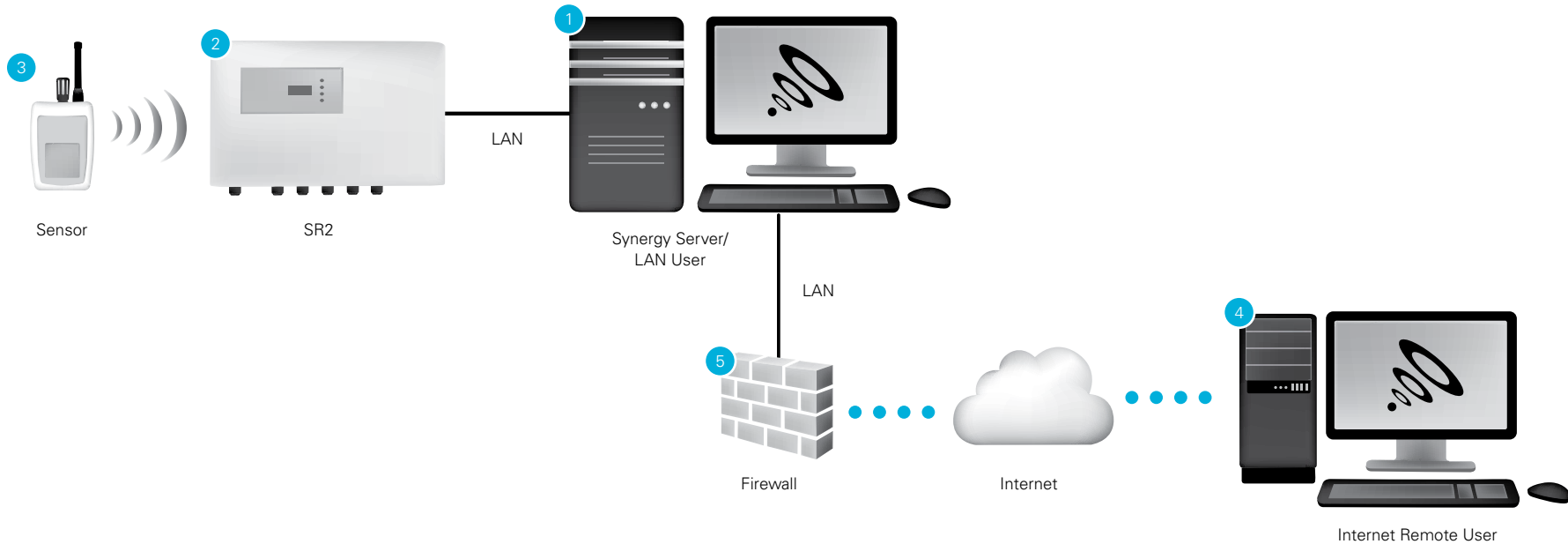
2. SR2

Wireless data collection unit with Fixed IP Address and on the same Sub Net as Synergy Server

3. Sensors

Wireless Data transmitters Configuration (Same as RadioLog)

Schematic B - Standalone installation with internet access



1. Synergy Server

Hardware

Operating System: Windows 2008 R2 SP1
 Memory: 4GB RAM (Minimum)
 Disk Space: 250GB (Raid configuration recommended)
 Network Speed: 1 Gb
 Optical Drive: DVD Reader

Configuration

SMS: Available
 Email Alerts: Available

Firewall: Changes required to allow users to view Synergy data and collect data
 IP Address: Static
 LAN: Same Sub Net as SR2

Software

Synergy Server Components
 SR2 Service
 Synergy Management Tools
 Note: Server Speciation should be reviewed as the number of sites and sensors increases.

2. SR2

Wireless data collection unit with Fixed IP Address and on the same Sub Net as Synergy Server.

3. Sensors

Wireless Data transmitters Configuration (Same as RadioLog)

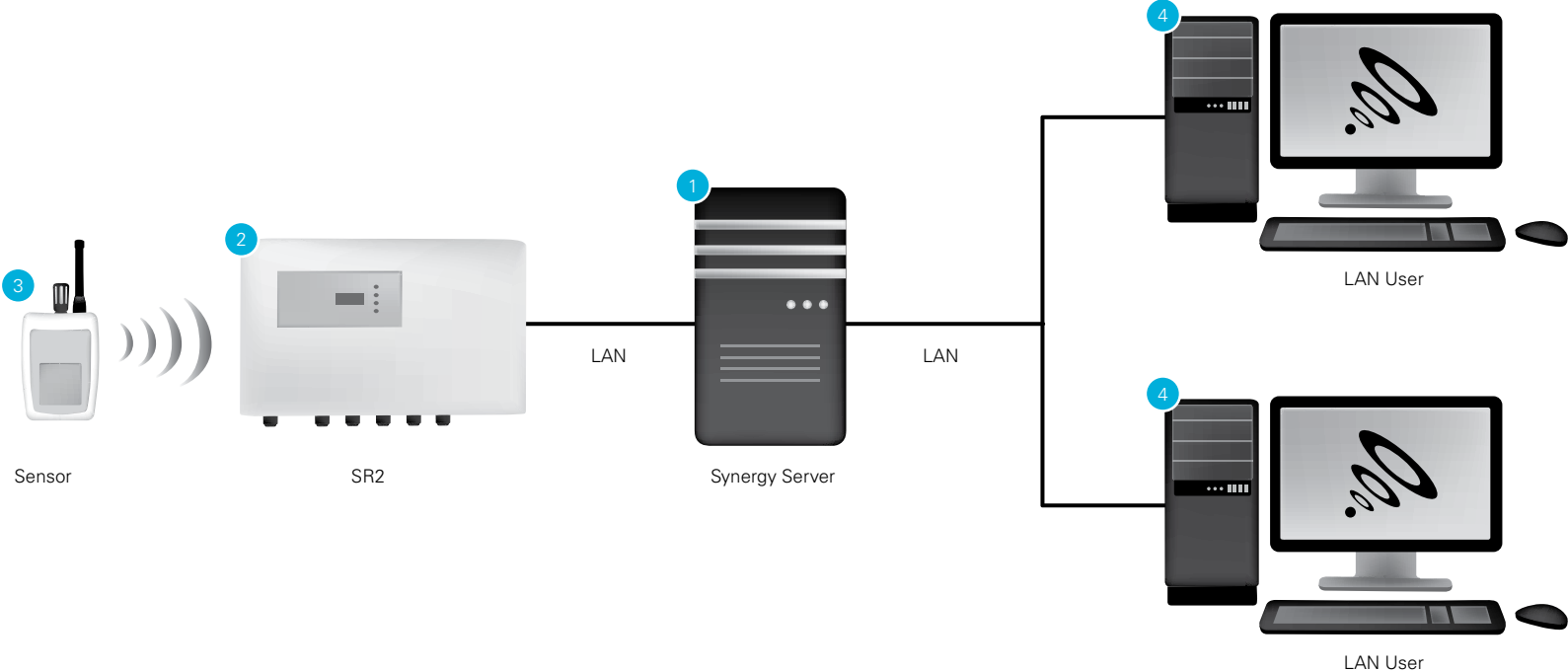
4. LAN Users and Remote Internet Users

PCs can be any PC with IE 8 or 9

5. Firewall for Master Site

Firewall for Master Site will require changes to allow Remote Internet Users to view data on the Synergy Server

Schematic C - Networked site with no internet access



1. Synergy Server

Hardware
 Operating System: Windows 2008 R2 SP1
 Memory: 4GB RAM (Minimum)
 Disk Space: 250GB (Raid configuration recommended)
 Network Speed: 1 Gb
 Optical Drive: DVD Reader

Configuration
 SMS: Available
 Email Alerts: Available

Firewall: Changes required to allow users to view Synergy data and collect data
 IP Address: Static
 LAN: Same Sub Net as SR2

Software
 Synergy Server Components
 SR2 Service
 Synergy Management Tools
 Note: Server Speciation should be reviewed as the number of sites and sensors increases.

2. SR2

Wireless data collection unit with Fixed IP Address and on the same Sub Net as Synergy Server.

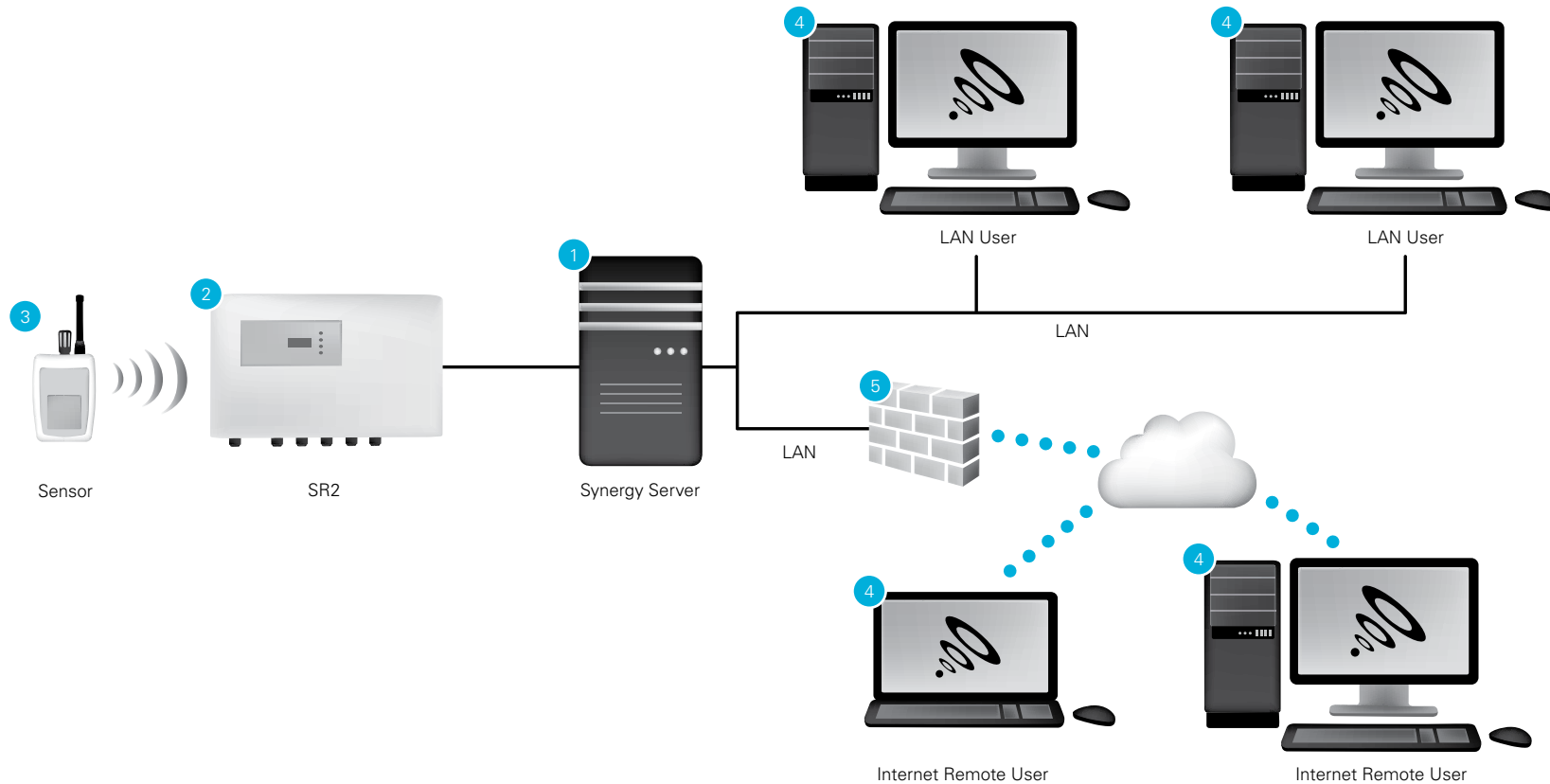
3. Sensors

Wireless Data transmitters Configuration (Same as RadioLog)

4. LAN Users and Remote Internet Users

PCs can be any PC with IE 8 or 9

Schematic D - Networked site with internet access



1. Synergy Server

Hardware

Operating System: Windows 2008 R2 SP1
 Memory: 4GB RAM (Minimum)
 Disk Space: 250GB (Raid configuration recommended)
 Network Speed: 1 Gb
 Optical Drive: DVD Reader

Configuration

SMS: Available
 Email Alerts: Available

Firewall: Changes required to allow users to view Synergy data and collect data
 IP Address: Static
 LAN: Same Sub Net as SR2

Software

Synergy Server Components
 SR2 Service
 Synergy Management Tools
 Note: Server Speciation should be reviewed as the number of sites and sensors increases.

2. SR2

Wireless data collection unit with Fixed IP Address and on the same Sub Net as Synergy Server.

3. Sensors

Wireless Data transmitters Configuration (Same as RadioLog)

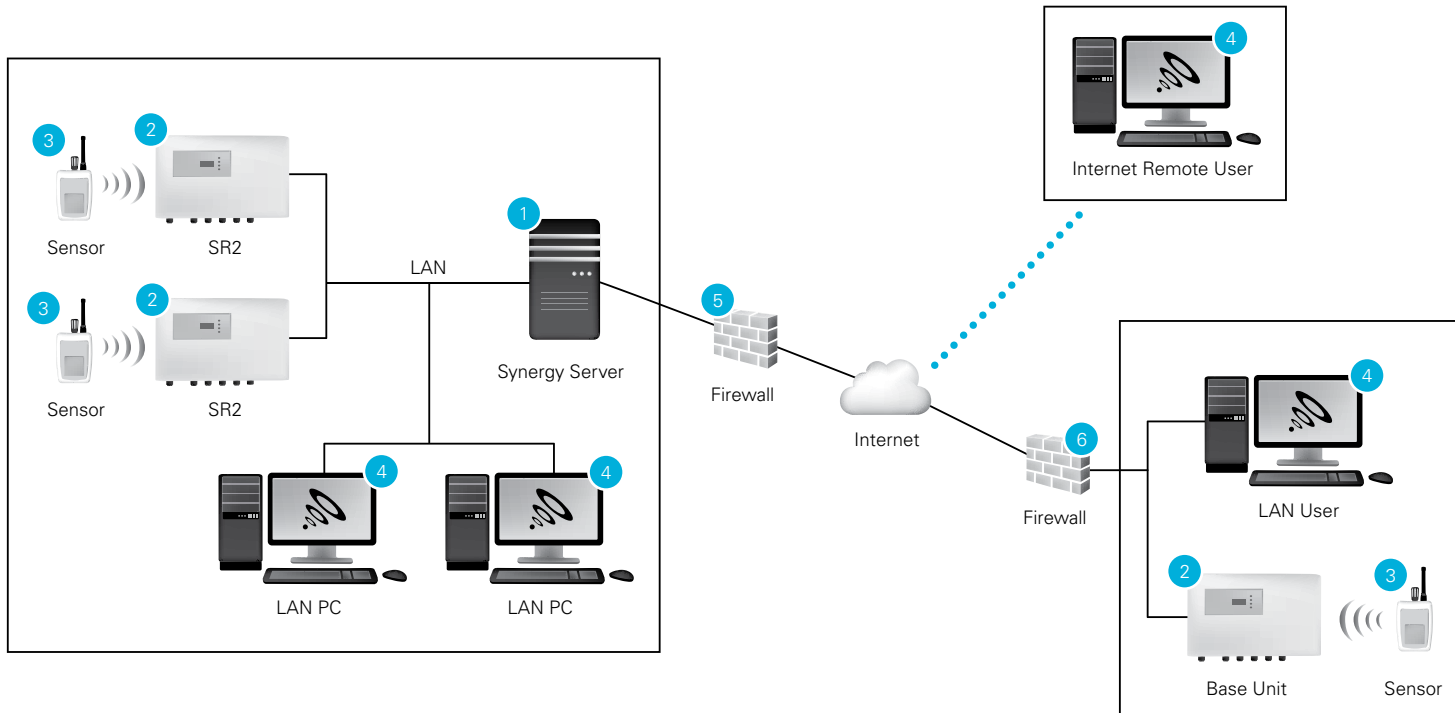
4. LAN Users and Remote Internet Users

PCs can be any PC with IE 8 or 9

5. Firewall for Master Site

Firewall for Master Site will require changes to allow Remote Internet Users to view data on the Synergy Server

Schematic E - Networked site with remote site + internet access



1. Synergy Server

Hardware

Operating System: Windows 2008 R2 SP1
 Memory: 4GB RAM (Minimum)
 Disk Space: 250GB (Raid configuration recommended)
 Network Speed: 1 Gb
 Optical Drive: DVD Reader

Configuration

SMS: Available
 Email Alerts: Available
 Firewall: Changes required to allow users to view Synergy data and collect data

IP Address: Static
 LAN: Same Sub Net as SR2

Software

Synergy Server Components
 SR2 Service
 Synergy Management Tools
 Note: Server Speciation should be reviewed as the number of sites and sensors increases.

2. SR2

Wireless data collection unit with Fixed IP Address and on the same Sub Net as Synergy Server.

3. Sensors

Wireless Data transmitters Configuration (Same as RadioLog)

4. LAN Users and Remote Internet Users

PCs can be any PC with IE 8 or 9

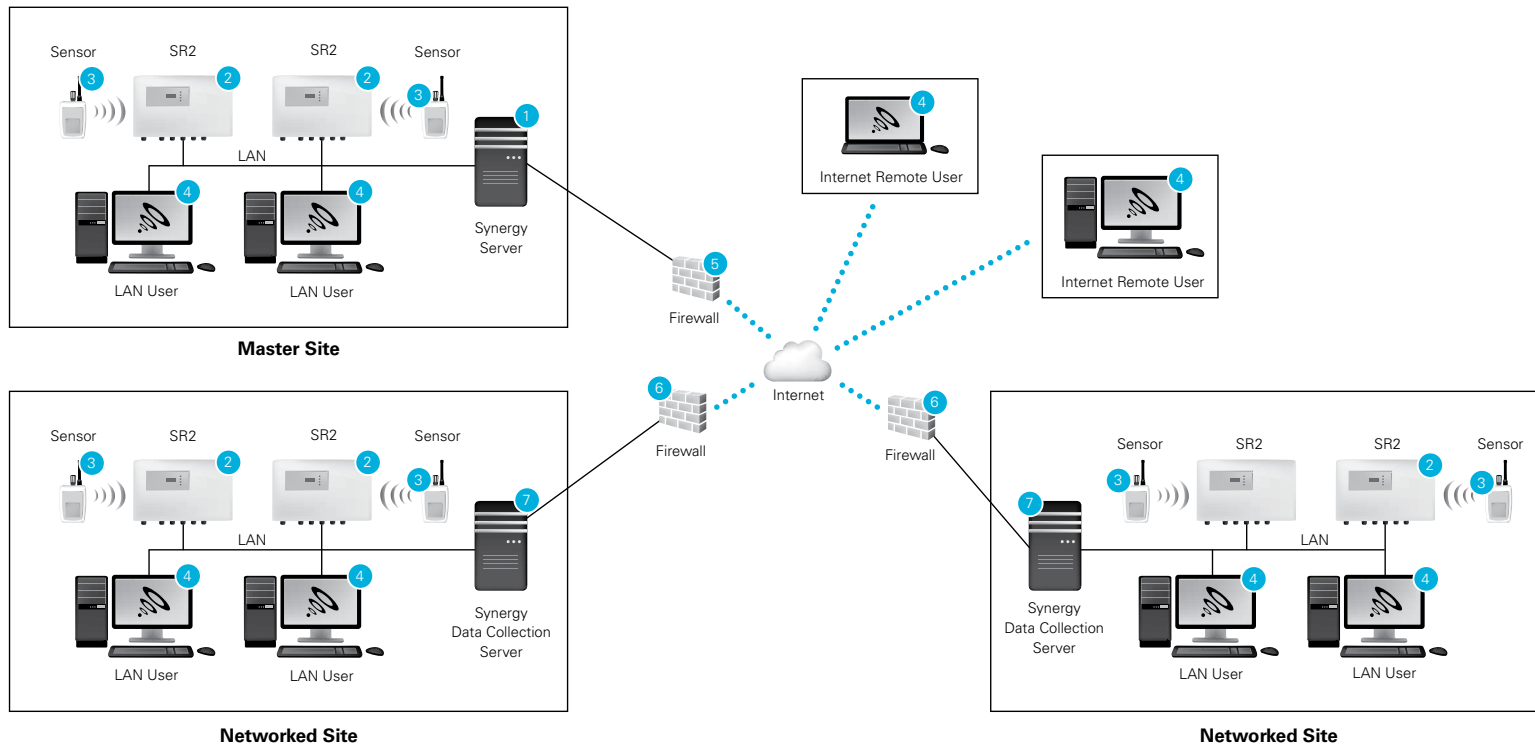
5. Firewall for Master Site

Firewall for Master Site will require changes to allow Remote Internet Users to view data on the Synergy Server

6. Firewalls for Data Collection Sites

Firewall for other Sites will require changes to allow SR2 data to be collected by Synergy Server

Schematic F - Multi-site with internet access



1. Synergy Server

Hardware

Operating System: Windows 2008 R2 SP1
 Memory: 4GB RAM (Minimum)
 Disk Space: 250GB (Raid configuration recommended)
 Network Speed: 1 Gb
 Optical Drive: DVD Reader

Configuration

SMS: Available
 Email Alerts: Available
 Firewall: Changes required to allow users to view Synergy data and collect data
 IP Address: Static
 LAN: Same Sub Net as SR2

Software

Synergy Server Components
 SR2 Service
 Synergy Management Tools
 Note: Server Speciation should be reviewed as the number of sites and sensors increases.

2. SR2

Wireless data collection unit with Fixed IP Address and on the same Sub Net as Synergy Server.

3. Sensors

Wireless Data transmitters Configuration (Same as RadioLog)

4. LAN Users and Remote Internet Users

PCs can be any PC with IE 8 or 9

5. Firewall for Master Site

Firewall for Master Site will require changes to allow Remote Internet Users to view data on the Synergy Server

6. Firewalls for Data Collection Sites

Firewalls for Data Collection Sites will require changes to allow data to be collected from the Synergy Data Collection Server to the Synergy Server

7. Synergy Data Collection Server

Hardware

Operating System: Windows XP, Windows 7
 Memory: 4GB RAM (Minimum)
 Disk Space: 100 Gb
 Network Speed: 1 Gb
 Optical Drive: DVD Reader

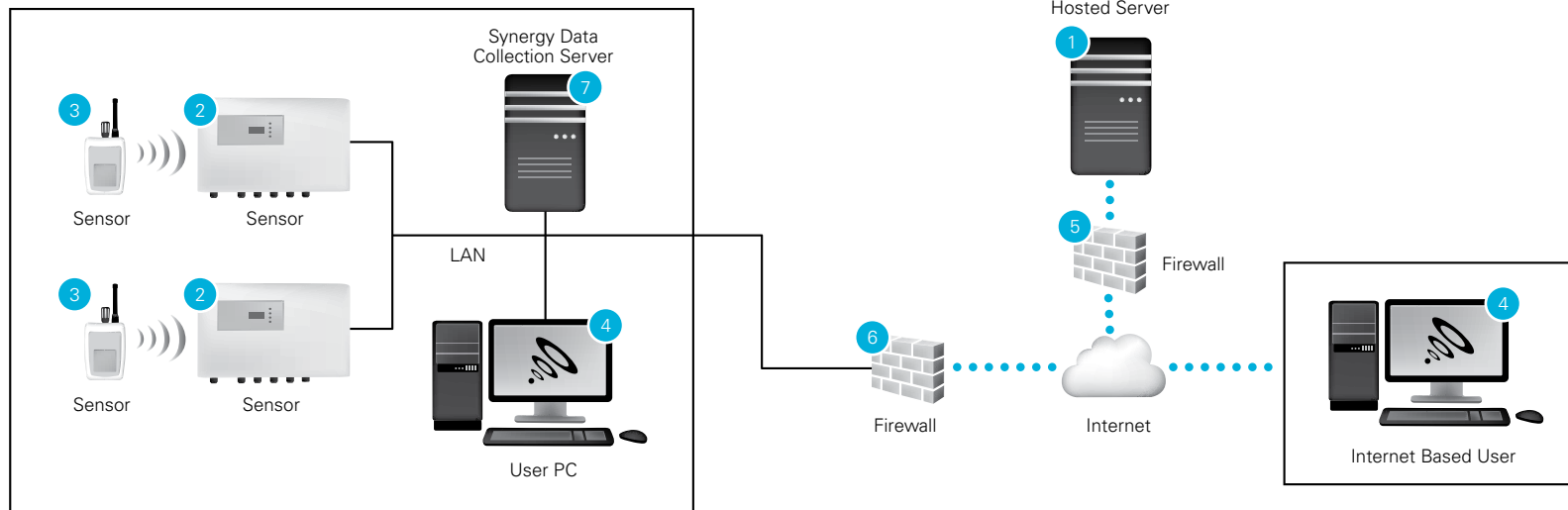
Configuration

Firewall: Changes required to allow Synergy Server to collect data
 IP Address: Fixed
 LAN: Same Sub Net as SR2

Software

SR2 Service

Schematic G - Hosted Application



1. Synergy Server

Hardware

Please contact sales at the IMC Group

Configuration

SMS: Not Available
 Email Alerts: Available
 Firewall: Changes required to allow users to view Synergy data and collect data
 IP Address: Static

Server Specification should be reviewed as the number of sites and sensors increases.

2. SR2

Wireless data collection unit with Fixed IP Address and on the same Sub Net as Synergy Server.

3. Sensors

Wireless Data transmitters Configuration (Same as RadioLog)

4. LAN Users and Remote Internet Users

PCs can be any PC with IE 8 or 9

5. Firewall for Hosted Server

Firewall for Hosted Server will require changes to allow Remote Internet Users to view data on the Synergy Server, and data to be collected from other sites

6. Firewalls for Data Collection Sites

Firewalls for Data Collection Sites will require changes to allow data to be collected from the Synergy Data Collection Server to the Synergy Server

7. Synergy Data Collection Server

Hardware

Operating System: Windows XP; Windows 7
 Memory: 4GB RAM (Minimum)
 Disk Space: 100 Gb
 Network Speed: 1 Gb
 Optical Drive: DVD Reader

Configuration

Firewall: Changes required to allow Synergy Server to collect data
 IP Address: Fixed
 LAN: Same Sub Net as SR2

Software

SR2 Service



Intelligent monitoring and control solutions:
In Buildings | In Transit | Outdoor/Remote

[Contact Us](#) for more information about how to apply our products to your application.

The IMC Group Limited, Pendle House, Jubilee Road, Letchworth, Hertfordshire SG6 1SP Tel: +44 (0)1462 688070 Web: www.the-imcgroup.com