

FEATURES

- ❖ Rugged
- ❖ Submersible
- ❖ Reusable
- ❖ Programmable start time
- ❖ Real-time operation
- ❖ N.I.S.T. traceable
- ❖ User-friendly
- ❖ Low cost
- ❖ CE approved

APPLICATIONS

- ❖ Implement HACCP Programs
- ❖ Autoclave Verification
- ❖ Food preparation and processing
- ❖ Environmental studies
- ❖ Well monitoring
- ❖ Dish washer testing
- ❖ Hostile environment monitoring
- ❖ Medical/Pharmaceutical



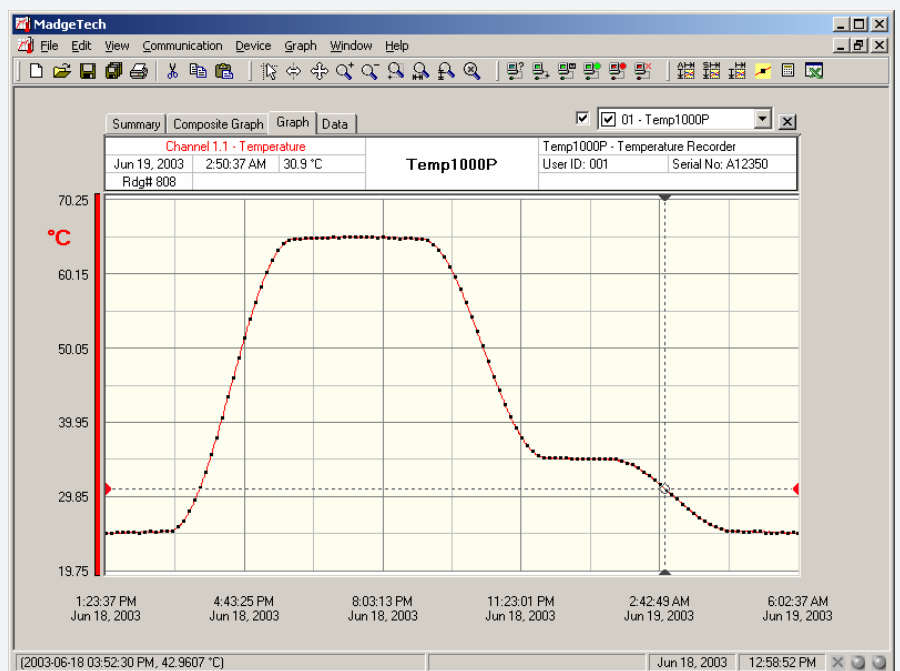
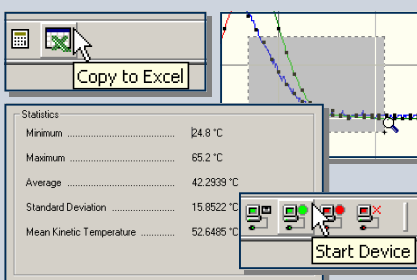
The 7" probe on the Temp1000P reaches for the temperature you need and records it with the precision you demand. The probe has a resolution of 0.05°C and a range of -100°C to +260°C. (The body of the Temp1000P is rated for -40°C to +80°C)

Food processing of large items (eg. Hams, beef sides) requires temperature validation deep inside the product to ensure the cooking, cooling or storage processes were within specification. The food-grade 7" probe has a sharp point for easy insertion into the product. The Temp1000P is submersible so it can be used during washing or spraying.

The MadgeTech software will display your data in the common units of temperature along with Kelvin and Rankine. The software also includes built-in Pasteurization Units (PU) and F0 analyses. If our powerful software doesn't do the exact analysis you need, one click is all you need to export the data into Microsoft Excel®.

SOFTWARE

MadgeTech's Data Recorder Software is an easy to use Windows-based software package that allows the user to effortlessly collect, display and analyze data. A variety of powerful tools allow you to examine, export, and print professional looking data with just a click of the mouse.



TEMP1000P SPECIFICATIONS

Temperature Sensor: 100 Ohm Platinum RTD	Calibration: Digital calibration through software
Temperature Range: -40 °C to +80 °C	Calibration Date: Automatically recorded within device
Probe Range: -100 °C to +260 °C	Power: 3.6V lithium battery included
Temperature Resolution: 0.05 °C	Battery Life: 1 year typical (1 minute reading rate at 25 °C)
Calibrated Accuracy: ±0.5 °C (0 to +50°C)	Data Format: Date and time stamped °C, °F, °K, °R
Start Time: Software programmable start time and date. Up to six months in advance	Time Accuracy: ±1 minute/month at 20°C (RS232 cable not in use)
Real Time Recording: May be used with PC to monitor and record data in real time	Computer Interface: PC serial or RS232C COM (Interface cable required); 2,400 baud
Memory: 32,767 readings	Software: Windows 95/98/ME/NT/2000/XP based software
Reading Interval: 1 reading every 2 seconds to 1 every 12 hours	Operating Environment: -40 °C to +80 °C, 0 to 100 %RH
	Body Dimensions: 4.5" x 1.0" dia (115mm x 26mm dia.)
	Probe Dimensions: 6.75" x 0.2" dia (172mm x 5 mm dia.)
	Weight: 7.3 oz (205g)
	Approvals: CE

BATTERY WARNING: RISK OF FIRE OR EXPLOSION. DO NOT RECHARGE, FORCE OPEN, HEAT OR DISPOSE OF IN FIRE.

SOFTWARE FEATURES

Multiple Graphs: Simultaneously analyze data from several units or deployments; easily switch to a single data series	Statistics: Calculate averages, min, max, standard deviation, and mean kinetic temperature with the touch of a button
Real-Time Recording: Collect and display data in real-time while continuing to log	Export Data: Export data in a variety of common formats, or switch to Excel with a single click
Graphical Cursor: One click displays readings by time, value, parameter or sample number	Calibration: Fully digital calibration function automatically stores parameters in device
Data Table: Instantly access tabular view for detailed dates, times, values, and annotations	Logger Configuration: Easy set up and launch of data loggers with immediate or delayed start, preferred sample rate, and device ID
Scaling Options: Autoscale function fits data to the screen, or allows user to manually enter their own values	Communications: Automatically sets up communications port, or lets user set configuration
Formatting Options: Change colors, line styles, plotting options, show or hide channels in an instant	Printing: Automatically print graphical or tabular data

*Specifications are subject to change without notice. Specific warranty and remedy limitations apply. Call 1-603-456-2011 or go to www.madgetech.com for details.

ORDERING INFORMATION

Model	Description
TEMP1000P	Rugged Temperature Recorder with 7" Probe
IFC110	Software, manual and 9-pin computer interface cable
NIST	N.I.S.T. Calibration Certificate

ASK ABOUT OUR OTHER DATA RECORDERS

Temperature	pH
Humidity	Level
Pressure	Shock/Vibration
Bridge/Strain	Submersible
Current	Intrinsically Safe
Pulse/Event	RF Transmitters
Voltage	Multi-parameter



201 Route 103 West - PO Box 50 · Warner, NH 03278
Phone: (603) 456-2011 · Fax: (603) 456-2012
info@madgetech.com · www.madgetech.com