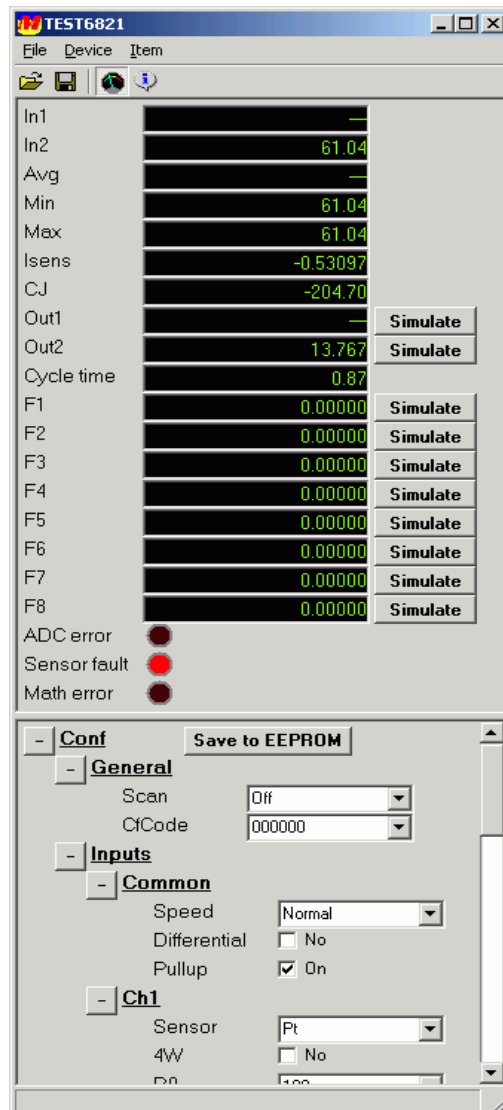


User Manual

25.3.2008
MekuWin V1.9.0
MekuUI V1.9.0

MekuWin II Configuration software



Nokeval

INTRODUCTION

MekuWin can be used to change settings and monitor various Nokeval products. It has an unique feature: it loads the structure and the contents of the configuration menu from the target device, so the same MekuWin version can be used with past and forecoming products. There is no need to update this software every time a new product or product version is released.

The software runs in Windows 95, 98, Me, 2000, and XP. For users with DOS or Windows 3.1, an old MekuWin is available on request.

INSTALLING

The installation package can be obtained on Nokeval Software CD, or downloaded from www.nokeval.com with no charge.

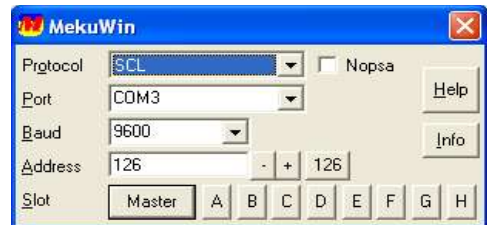
Run Setup.exe and go through the wizard. Default installation folder is C:\Program Files\Nokeval\MekuWin. In addition, two ActiveX components are installed in C:\Windows\System32. These are PHIL.exe, that manages the serial ports, and MekuUI.exe, that shows the configuration window. Actually the MekuWin.exe in Program Files is only a launcher, that launches MekuUI.exe after the serial parameters have been set.

CONNECTING

When MekuWin is started, the launcher window is shown. It is used to select the protocol, the serial port, baud rate, serial bus address, and slot address. These have to match to the device.

There is three **protocols** to select from:

- SCL: Nokeval SCL protocol. Used with most of Nokeval products.
- Modbus: Nokeval Modbus devices. Used if the device is set to Modbus mode.
- SEM: Status Instruments SEM series in-head transmitters.
- Offline: Not a physical connection but can be used to view a menu stored in a file.



When Nokeval SCL protocol is used, some devices will respond in **address** 126 in addition to the address of their own. Worth trying if the address is not known. Moreover, when using POL-RS232 cable or DCS772 USB-POL converter, most devices will respond in any address when the cable is plugged in.

Legal addresses with SCL protocol are 0...123 and 126. With Modbus, 1...247. SEM does not use address.

The **Slot** buttons Master, A, B, etc are used in devices that have multiple cards, each having a menu of their own. A separate connection to any of the cards (slots) can be made. Use the **Master** button when configuring simple devices with one processor card only.

Connection is established when a Slot button is clicked. A new configuration window will be opened with the serial parameters selected. It is allowed to open several connections to other devices or slots before closing the previous.

The "**Nopsa**" checkbox can be used to enable Nopsa command language supported by some devices. Normally it is not used.

If you get an error message "This program does not support this device. Please update.", it means that this MekuWin is too old for this device. Then you must download a new MekuWin from Nokeval [www](http://www.nokeval.com) site.



CONFIGURATION WINDOW


The configuration menu is a hierarchical tree: The Conf menu has submenus, and these contain settings and possibly more submenus, etc. In the tree view, the submenus can be expanded using the + buttons, or collapsed back using – buttons. In the pictures, the upper has all the submenus collapsed, while the lower picture shows some submenus expanded.


Now the settings can be freely changed. The new setting is automatically sent to the device when an other setting is entered or Enter key is pressed. This way you can immediately see how the change affects the operation.

If you see a button **Save to EEPROM** next to a menu title, you can use it to command the device to store all the settings in that menu and its submenus to the permanent EEPROM memory, so that they will be retained even when the power is off.

A **Password** button appears, if some menu is password protected. To enter the password, click the button and enter the password. If it is not known, the settings can't be changed, only viewed.

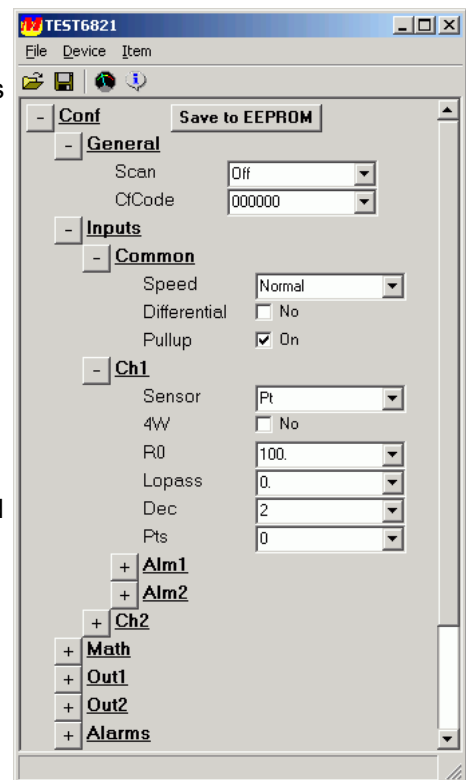
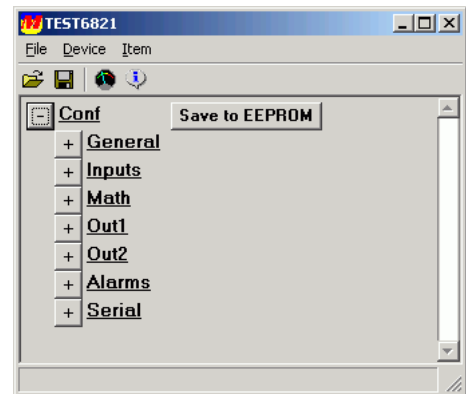
All the settings can be stored in a file with  button and later retrieve with . File format is simple: there is the hierarchical name of the setting and the value, separated by a single tabulator.

Monitoring is started and stopped with  button. See the next chapter.


Some information on the selected setting can be obtained by clicking .

Some settings may have **L** **F** buttons next to them. They can be used to send a Lock or Free command. Their use is dependent on the device.

When the settings are done, the connection is closed by closing the window on the top right corner, or selecting File/Exit on the pulldown menu. Do this always before detaching the cables, so that MekuWin can ensure that all changes are stored in the permanent memory of the device.



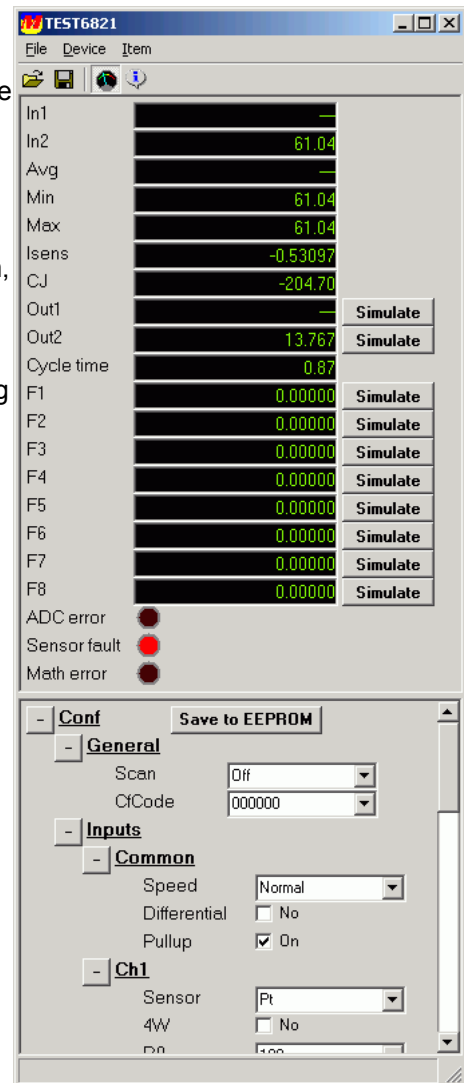
MONITORING

Monitoring means watching the readings and other varying results of the target device. It is started by clicking the  button. While monitoring, the monitor readings are continuously updated, but still the settings can be changed.

What you see in the monitor menu, depend entirely on the device. So see the device user manual for explanation.

There may be indicator lights below the monitor readings. Using them, the device can tell about its problems.


Some readings may have **Simulate** button next to them. By clicking one, a Lock command is sent to the device, making it to stop updating that reading. After that, a dialog is shown, where you can enter a simulated reading, that is sent to the device. The device will use the simulated value instead of the real value. The normal operation is returned by clicking the button again.




PULL-DOWN MENU

File

Load settings...

Loads the settings from a file. Same as  in the toolbar. Normally the settings are retrieved to the Conf menu, but if you have the main menu visible, then to that.

Save settings as...

Saves the settings in a tab-separated file. Same as .

Install device file...

MekuWin uses files with .mek extension to store the menu structure of the device. Normally

MekuWin loads the structure from the device itself and writes a mek file. But if you have got a mek file, possibly with help texts, from somewhere, you can ask MekuWin to use that file. Actually this only copies the file to the folder where the mek files are stored.

Print...

Prints the settings on the paper.

Exit

Closes the configuration window, and ensures that all the settings have been sent to the device and written in the permanent EEPROM memory.

Device

Monitor current readings

Starts and stops monitoring. Same as .

Show main level

Normally only the Conf menu is shown, but the devices contain more menus for factory calibration, monitoring and some other functions. These can be accessed by selecting Show main level.

Write to EEPROM

Sends all the settings and stores in the permanent EEPROM memory in the device. This is done

automatically when the configuration window is closed.

Read from EEPROM

Tells the device to read all the settings from the permanent memory, and then retrieves them to the configuration window. Can be used to cancel all the changes made.

Reload menu

Loads the menu structure from the device and writes it in a mek file. Not normally needed, but may be useful if the menu is corrupted.

Item

Item menu settings concern the single setting that has focus (where the cursor is).

Reload value

Loads a single setting from the device to the configuration window. Can be used to ensure that the setting value is correct.

Lock and Free

Gives a Lock or Free command for the selected setting. Its use depends on the device.

Info

Shows additional information on the setting. If the mek file contains help texts, shows them too.

Table

Table menu can be used to perform operations on tabular sections of the menu. If there is settings

named for example
Sca1
Mea2
Sca2,

Mekuwin detects that there is regular repetition and allows clipboard operations and inserting and deleting a row. In the previous example, Mea1 and Sca1 form one row and Mea2 and Sca2 another.

Copy values

Copies the table values to clipboard. The columns are separated by tabulators and rows by CRLF. The table can then be pasted to a spreadsheet software. It does not matter where in the table the focus is; the whole table is always copied.

Paste values

Fills the table with values from the clipboard. There must be right amount of tabulator-separated columns, otherwise the pasting is not possible.

Insert row before

Moves the rows after the cursor one row down making space for a new row.

Delete row

Deletes the row at cursor by moving the following rows up by one.