

## Counter/batcher 2061 for pulse sensors

- Sensors NPN, PNP, Namur, closing contact or Pick-up
- Input range 0..5 kHz
- Up/down count
- Dose/batch functions
- Red or green 6-digit display
- Display memory
- Display scaling from pulses
- Alarm level for dose function
- Pulse divider function
- Serial output RS232 and RS485
- Front panel protection IP65
- Sensor supply 24 VDC, max. 150 mA
- Line voltage 85..240 VAC or 12..32 VDC



Counter 2061 suits well for distance measurement of various movement sensors, piece count or for dosage. Counter has red or green display, count up or down. Input pulse can be scaled to correspond desired number value, f.ex. one pulse may correspond three numbers or part of numbers in display (1 pulse=0.034 digits in display). Display memory (option) stores calculated value for one week after power brake.

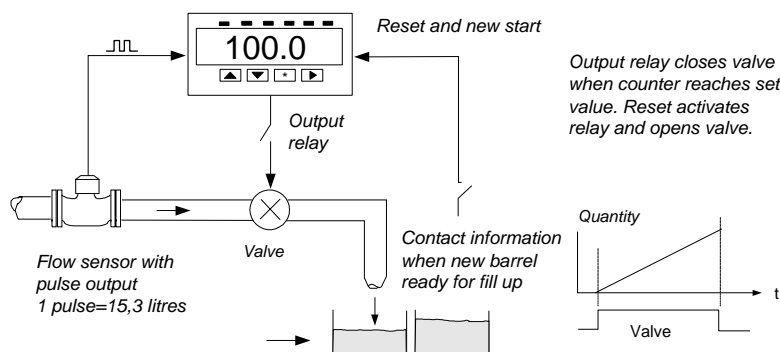
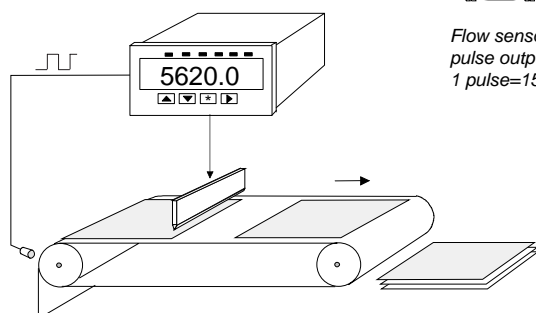
You may use counter as a dosimeter by setting alarm value to correspond desired batch value. Output relay is activated when calculated batch is reached. New count starts by resetting counter by remote contact. You can also determine start level from which you count down (emptying) or up (filling). Batch level is set in measuring mode by front panel keys.

Output relay can also be used as pulse divider by using internal reset (Loop function) when alarm value is reached, f.ex. 26,5 input pulses are converted to correspond one output pulse; in this stage output relay sends only 200 mS impulse when counter resets. Count amount is set by front panel arrow keys.

Meter is a part of 2000 product series and can be changed to other type of meter by simply changing the input card. F.ex. counter for analog input signal is available as model 2026 (own data sheet). Whole 2000 series is constructed into two red or green display mother boards (low and high voltage power supply) which comprises 36 variants of digital panel meter. With optional add-on cards you can modify a unit that suits best for your application.

### Application examples

Picture on right shows application of flow sensor with pulse output. Below an application from piece goods automation.



Scalable pulse input may be set to indicate real value in display, f.ex. 1 pulse corresponds 5,3 m³ in display or 1 pulse corresponds 15,3 litres.

# Technical specification:

## Sensors:

NPN, PNP, Namur, closing contact or Pick-up  
Input voltage levels 0 = < 1V, 1 = 5..32V

## Sensor supply

24 VDC  $\pm$  5%, max. 150 mA

## Display scaling:

-99999..999999

## Input frequency range:

0..5 kHz

## Decimal selection:

0,001..1

## Measuring method:

Counting of input pulses into counter. You can multiply counter value by wished number value. Result is shown in display.

## Output:

Alarm relay will be activated when set point is reached. Alternatively Loop-function; display is reset at alarm value automatically and relay is activated only 200 mS.

## Serial output:

RS232 and RS485. Serial output only for measurement reading. Baud rate and address (RS485 selectable).

## Relays:

You can set alarm value by front panel keys.

Relay contacts max. 230 VAC, 0,5 A. Alternatively semiconductor relays 60 V / 0,5 A

## Display memory:

Add-on card 2000-MEM stores display for 1 week without power supply.

## General

Input filter	Digital, freely adjustable
AD-conversion	16 bits (64 000)
Temperature stab.	0.0004 %/°C
Display	6-num. bright red LED, digit height 14.5 mm
Power	85..240 VAC or 12..30 VDC/ 24VAC
Front panel	Protection IP65 with gasket
Weight	240 g

## Order example:

### 2061-MEM-REL2-24VDC

2061 red display

2061GR green display

Memory card MEM

Relay card REL2

Power supply

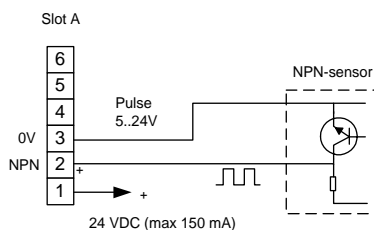
12..32 VDC and 24VAC

## Optional add-on cards:

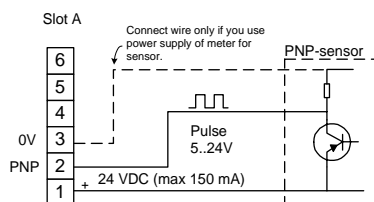
Memory	2000-MEM
Relay card for 2 relays	2000-REL2
Serial output	2000-RS232/RS485
Semiconductor relays (4)	2000-I/O
Mother board has two slots (B and C) for add-on cards.	

## Connection and dimensions:

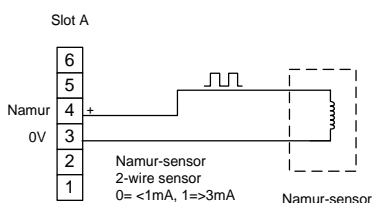
### NPN-input



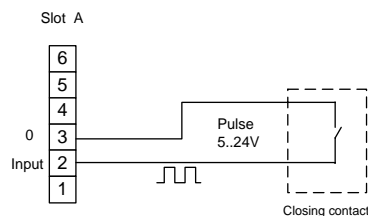
### PNP-input



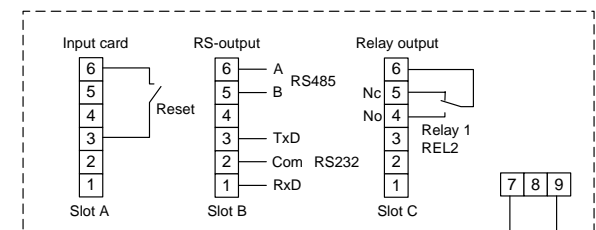
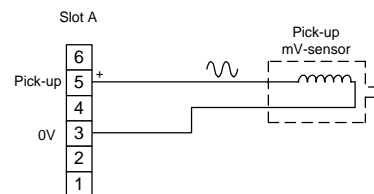
### Namur-input



### Closing contact

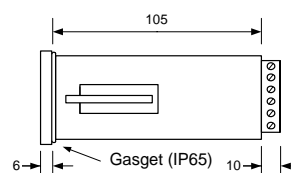
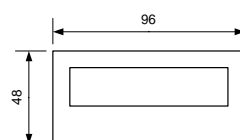


### Pick-up input



Slot A is always for input cards and slots B and C for optional cards.

Power supply 85..240 VAC or 12..32 VDC, 24 VAC (no polarity)



Meter front cover features rating IP65 when gasket installed between front cover and panel

Panel cut out 43,5 x 90,5 mm

Centering taps in corners R 1,5 mm