

### FEATURES

- ❖ Rugged
- ❖ Reusable
- ❖ Submersible to 150 ft
- ❖ Programmable start time
- ❖ Real-time operation
- ❖ N.I.S.T. traceable
- ❖ User-friendly
- ❖ Low cost

### APPLICATIONS

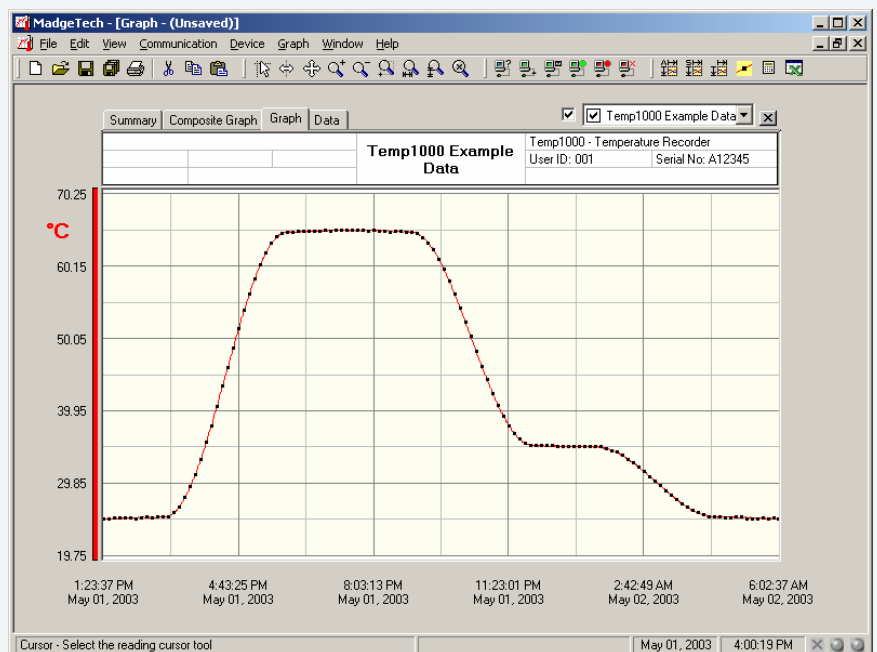
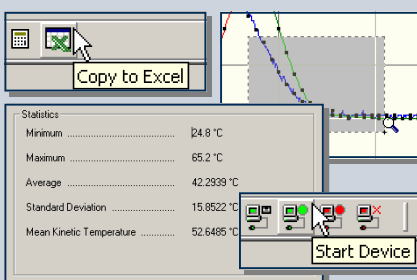
- ❖ Implement HACCC Programs
- ❖ Autoclave Verification
- ❖ Food preparation and processing
- ❖ Environmental studies
- ❖ Well monitoring
- ❖ Dish washer testing
- ❖ Hostile environment monitoring
- ❖ Medical/Pharmaceutical



The TEMP1000 temperature logger is a rugged, water proof, battery powered, stand alone device which can be used to automatically record temperatures between -40 °C and 125 °C. This all in one compact, portable, easy to use device is able to measure and record up to 32,767 temperature measurements. The TEMP1000 is ideal for use in harsh environments. Its real time clock ensures that all the data is time and date stamped. The storage medium is non-volatile solid state memory, providing maximum data security even if the battery becomes discharged. The device can be started and stopped directly from your computer and its small size allows it to fit almost anywhere. The TEMP1000 makes data retrieval quick and easy. Simply plug the device into an empty COM port and our user-friendly software does the rest.

### SOFTWARE

MadgeTech's Data Recorder Software is an easy to use Windows-based software package that allows the user to effortlessly collect, display and analyze data. A variety of powerful tools allow you to examine, export, and print professional looking data with just a click of the mouse.



Demo our software at [www.madgetech.com](http://www.madgetech.com)

## TEMP1000 SPECIFICATIONS

<b>Temperature Sensor:</b> Semiconductor	<b>Calibration:</b> Digital calibration through software
<b>Temperature Range:</b> -40 °C to +125 °C	<b>Calibration Date:</b> Automatically recorded within device
<b>Temperature Resolution:</b> 0.1 °C	<b>Power:</b> 3.6V lithium battery included
<b>Calibrated Accuracy:</b> ±0.5 °C (0 to +50°C)	<b>User Replaceable Battery:</b> 1 year typical at 25 °C, 1 minute reading intervals
<b>Start Time:</b> Software programmable start time and date. Up to six months in advance	<b>Data Format:</b> Date and time stamped °C, °F, °K, °R
<b>Real Time Recording:</b> May be used with PC to monitor and record data in real time	<b>Time Accuracy:</b> ±1 minute/month at 20°C (RS232 cable not in use)
<b>Memory:</b> 32,767 readings	<b>Computer Interface:</b> PC serial or RS232C COM (Interface cable required); 2400 baud
<b>Reading Interval:</b> 1 reading every 2 seconds to 1 every 12 hours	<b>Software:</b> Windows 95/98/ME/NT/2000/XP based software
	<b>Operating Environment:</b> -40 °C to +80 °C, 0 to 100 %RH
	<b>Dimensions:</b> 4.3" X 1.0" Dia.(108mm x 26mm)
	<b>Weight (Aluminum) :</b> 4 oz (110 g)
	<b>Weight (Stainless) :</b> 8 oz (230 g)

## TEMP1000 SOFTWARE FEATURES

<b>Multiple Graphs:</b> Simultaneously analyze data from several units or deployments; easily switch to a single data series	<b>Statistics:</b> Calculate averages, min, max, standard deviation, and mean kinetic temperature with the touch of a button
<b>Real-Time Recording:</b> Collect and display data in real-time while continuing to log	<b>Export Data:</b> Export data in a variety of common formats, or switch to Excel with a single click
<b>Graphical Cursor:</b> One click displays readings by time, value, parameter or sample number	<b>Calibration:</b> Fully digital calibration function automatically stores parameters in device
<b>Data Table:</b> Instantly access tabular view for detailed dates, times, values, and annotations	<b>Logger Configuration:</b> Easy set up and launch of data loggers with immediate or delayed start, preferred sample rate, and device ID
<b>Scaling Options:</b> Autoscale function fits data to the screen, or allows user to manually enter their own values	<b>Communications:</b> Automatically sets up communications port, or lets user set configuration
<b>Formatting Options:</b> Change colors, line styles, plotting options, show or hide channels in an instant	<b>Printing:</b> Automatically print graphical or tabular data

\*\*As part of our commitment to continuous product improvement, MadgeTech reserves the right to change product specifications without notice.

### ORDERING INFORMATION

Model	Description
TEMP1000	Rugged Temperature Recorder
IFC101	Software, manual and 9-pin computer interface cable
N.I.S.T. Cert	N.I.S.T. Calibration Certificate

### ASK ABOUT OUR OTHER DATA RECORDERS

<b>Temperature</b>	<b>pH</b>
<b>Humidity</b>	<b>Level</b>
<b>Pressure</b>	<b>Shock/Vibration</b>
<b>Bridge/Strain</b>	<b>Submersible</b>
<b>Current</b>	<b>Intrinsically Safe</b>
<b>Pulse/Event</b>	<b>RF Transmitters</b>
<b>Voltage</b>	<b>Multi-parameter</b>



201 Route 103 West - PO Box 50 · Warner, NH 03278  
 Phone: (603) 456-2011 · Fax: (603) 456-2012  
 info@madgetech.com · www.madgetech.com