

FEATURES

- ❖ Rugged
- ❖ Reusable
- ❖ Submersible
- ❖ Programmable start time
- ❖ Real-time operation
- ❖ N.I.S.T. traceable
- ❖ User-friendly
- ❖ Low cost

APPLICATIONS

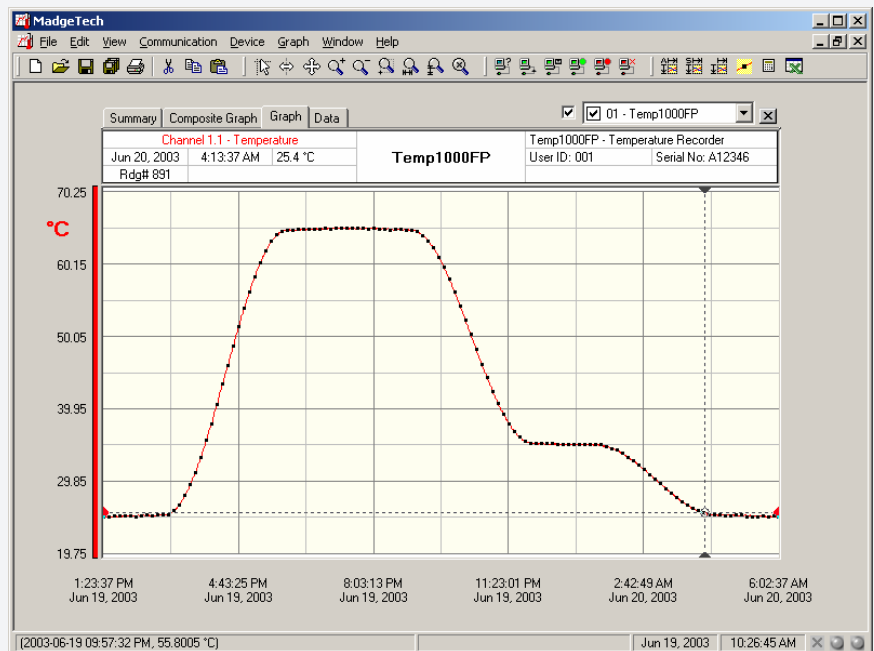
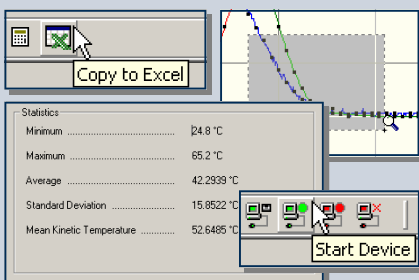
- ❖ Implement HACCP Programs
- ❖ Autoclave Verification
- ❖ Food preparation and processing
- ❖ Environmental studies
- ❖ Well monitoring
- ❖ Dish washer testing
- ❖ Hostile environment monitoring
- ❖ Medical/Pharmaceutical



The TEMP1000FP temperature logger is a rugged, water proof, battery powered, stand alone device which can be used to automatically record temperatures between -40 °C and 150 °C. This all in one compact, portable, easy to use device is able to measure and record up to 32,767 temperature measurements. The TEMP1000FP features a 12" flexible external probe and is ideal for use in harsh environments. Its real time clock ensures that all the data is time and date stamped. The storage medium is non-volatile solid state memory, providing maximum data security even if the battery becomes discharged. The device can be started and stopped directly from your computer and its small size allows it to fit almost anywhere. The TEMP1000FP makes data retrieval quick and easy. Simply plug the device into an empty COM port and our user-friendly software does the rest.

SOFTWARE

MadgeTech's Data Recorder Software is an easy to use Windows-based software package that allows the user to effortlessly collect, display and analyze data. A variety of powerful tools allow you to examine, export, and print professional looking data with just a click of the mouse.



TEMP1000FP SPECIFICATIONS

Temperature Sensor: 100 Ω Platinum RTD
Temperature Range: -40 °C to +150 °C
Temperature Resolution: 0.05 °C
Calibrated Accuracy: ± 0.5 °C (0 to +50°C)

Start Time: Software programmable start time and date. Up to six months in advance

Real Time Recording: May be used with PC to monitor and record data in real time

Memory: 32,767 readings

Reading Interval: 1 reading every 2 seconds to 1 every 12 hours

Calibration: Digital calibration through software

Calibration Date: Automatically recorded within device

Power: 3.6V lithium battery included

***Battery Life:** 1 year typical

Data Format: Date and time stamped °C, °F, °K, °R

Time Accuracy: ± 1 minute/month at 20°C (RS232 cable not in use)

Computer Interface: PC serial or RS232C COM (Interface cable required); 2,400 baud

Software: Windows 95/98/ME/NT/2000/XP based software

Operating Environment: -40 °C to +150 °C, 0 to 100 %RH

Dimensions (Body): 5.6" x 1.25" dia. (143mm x 32mm)

Dimensions (Probe): 10.8" x 0.125" dia. (275mm x 4mm)

Weight: 11.3 oz (320 g)

BATTERY WARNING: FIRE, EXPLOSION, AND SEVERE BURN HAZARD. DO NOT SHORT CIRCUIT, CHARGE, FORCE OVERDISCHARGE, DISASSEMBLE, CRUSH, PENETRATE OR INCINERATE. BATTERY MAY LEAK OR EXPLODE IF HEATED ABOVE 150 °C (302°F).

SOFTWARE FEATURES

Multiple Graphs:	Simultaneously analyze data from several units or deployments; easily switch to a single data series	Statistics:	Calculate averages, min, max, standard deviation, and mean kinetic temperature with the touch of a button
Real-Time Recording:	Collect and display data in real-time while continuing to log	Export Data:	Export data in a variety of common formats, or switch to Excel with a single click
Graphical Cursor:	One click displays readings by time, value, parameter or sample number	Calibration:	Fully digital calibration function automatically stores parameters in device
Data Table:	Instantly access tabular view for detailed dates, times, values, and annotations	Logger Configuration:	Easy set up and launch of data loggers with immediate or delayed start, preferred sample rate, and device ID
Scaling Options:	Autoscale function fits data to the screen, or allows user to manually enter their own values	Communications:	Automatically sets up communications port, or lets user set configuration
Formatting Options:	Change colors, line styles, plotting options, show or hide channels in an instant	Printing:	Automatically print graphical or tabular data

*Specifications are subject to change without notice. Specific warranty and remedy limitations apply. Call 1-603-456-2011 or go to www.madgetech.com for details.

ORDERING INFORMATION

Model	Description
TEMP1000FP	Rugged Temperature Recorder with 12" Flexible Probe
IFC110	Software, manual and 9-pin computer interface cable
NIST Cert	N.I.S.T. Calibration Certificate

ASK ABOUT OUR OTHER DATA RECORDERS

Temperature	pH
Humidity	Level
Pressure	Shock/Vibration
Bridge/Strain	Submersible
Current	Intrinsically Safe
Pulse/Event	RF Transmitters
Voltage	Multi-parameter



201 Route 103 West - PO Box 50 · Warner, NH 03278
Phone: (603) 456-2011 · Fax: (603) 456-2012
info@madgetech.com · www.madgetech.com