

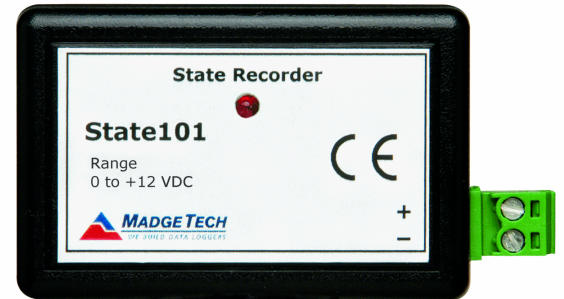
FEATURES

- ❖ Interfaces to contact closures
- ❖ Programmable engineering units
- ❖ Real time operation
- ❖ Miniature size
- ❖ Reusable
- ❖ User-friendly
- ❖ Low cost
- ❖ CE compliant

Applications

- ❖ Heating and cooling systems
- ❖ Security systems
- ❖ Power supply on/off
- ❖ Relay or dry contact closure
- ❖ TTL high/low
- ❖ Monitoring gas, water or electric pumps
- ❖ Time studies
- ❖ Status or state recording
- ❖ Replace costly strip chart recorders

State recorders are useful for collecting data on the duration of an event. The State101 can capture any event that lasts longer than one second. Some typical applications for state recorders include the monitoring of a furnace, air conditioner or pump turning on and off, or even how long a door is left open/closed.

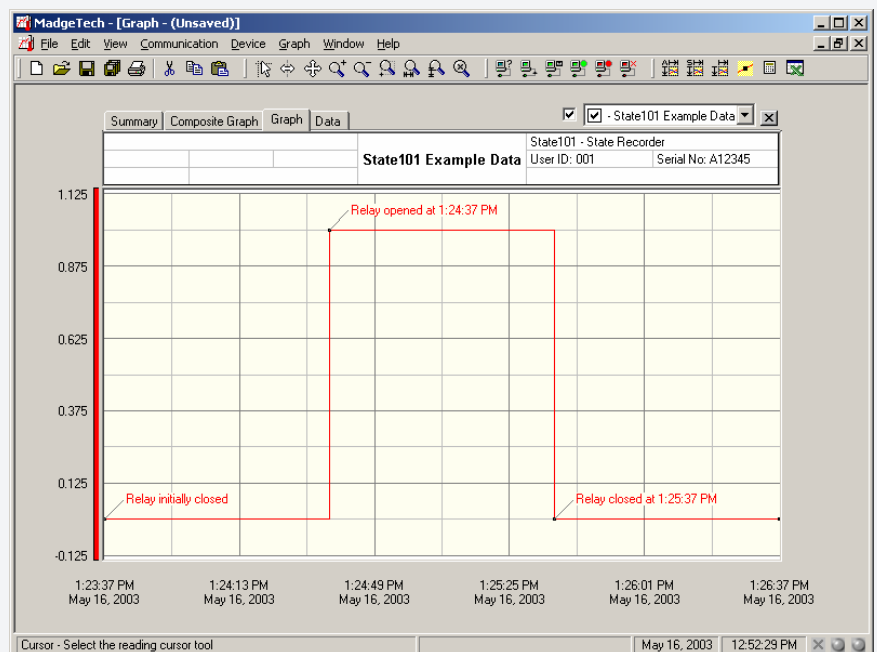
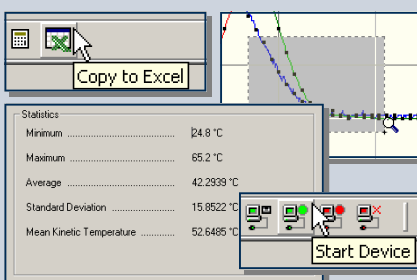


The State101 records a time-stamped value whenever a state of the input signal changes. It samples the input at a user specified time interval and records to memory only if the state had changed from the previous sample. This efficient method of writing to memory maximizes the length of time the device can record.

The State101 can store up to 13,107 time stamped state changes. The storage medium is non-volatile solid state memory, providing maximum data security even if the battery becomes discharged. The device can be started and stopped directly from your computer and its small size allows it to fit almost anywhere.

SOFTWARE

MadgeTech's Data Recorder Software is an easy to use Windows-based software package that allows the user to effortlessly collect, display and analyze data. A variety of powerful tools allow you to examine, export, and print professional looking data with just a click of the mouse.



Demo our software at www.madgetech.com

STATE101 SPECIFICATIONS

Input Connection: Removable screw terminal	Memory: 13,107 state changes
Input Low: < 0.4 V	Reading Interval: 1 reading every second to 1 every 12 hours
Input High: > 2.7 V	Start Time: Software programmable start time and date, up to six months in advance
Input Range: 0 to 12 VDC continuous (0 to 30 VDC peak)	Visual Indicator: LED flashes at selected reading rate.
Input Impedance: > 1 k Ω	User Replaceable Battery: 1 year typical life at 25 °C
Time Resolution: 1 second (reading rate dependent)	Power: 3.6V lithium battery, included
Engineering Units: User may define units up to 10 characters in length. This value is stored within the device.	Data Format: Date and time stamped state changes (on/off), user defined engineering units
Scale Factor: User may program any desired scaling factor from $\pm 1.0000E-31$ to $\pm 9.999E+31$. The scaling factor is stored within the device.	Time Accuracy: ± 1 minute/month at 20 °C (RS232 cable not in use)
Offset Value: User may program any desired offset value from $\pm 1.0000E-31$ to $\pm 9.9999E+31$. The offset is stored in the device.	Computer Interface: PC serial or RS232C COM (Interface cable required); 2,400 baud
Real Time Recording: May be used with PC to monitor and record data in real time	Software: Windows 95/98/ME/NT/2000/XP based software
	Operating Environment: -40 to +80 °C, 0 to 95 %RH non-condensing
	Dimensions: 1.4" x 2.6" x 0.6" (36mm x 66mm x 16mm)
	Weight: 0.9 oz (24 g)
	Material: ABS plastic
	Approvals: CE compliant

BATTERY WARNING: FIRE, EXPLOSION, AND SEVERE BURN HAZARD. DO NOT RECHARGE, DISASSEMBLE, HEAT ABOVE 212°F, INCINERATE OR EXPOSE CONTENTS TO WATER.

SOFTWARE FEATURES

Multiple Graphs: Simultaneously analyze data from several units or deployments; easily switch to a single data series	Statistics: Calculate averages, min, max, standard deviation, and mean kinetic temperature with the touch of a button
Real-Time Recording: Collect and display data in real-time while continuing to log	Export Data: Export data in a variety of common formats, or switch to Excel with a single click
Graphical Cursor: One click displays readings by time, value, parameter or sample number	Calibration: Fully digital calibration function automatically stores parameters in device
Data Table: Instantly access tabular view for detailed dates, times, values, and annotations	Logger Configuration: Easy set up and launch of data loggers with immediate or delayed start, preferred sample rate, and device ID
Scaling Options: Autoscale function fits data to the screen, or allows user to manually enter their own values	Communications: Automatically sets up communications port, or lets user set configuration
Formatting Options: Change colors, line styles, plotting options, show or hide channels in an instant	Printing: Automatically print graphical or tabular data

*Specifications are subject to change without notice. Specific warranty and remedy limitations apply. Call 1-603-456-2011 or go to www.madgetech.com for details.

ORDERING INFORMATION

Model	Description
STATE101	State Recorder
IFC110	Software, Manual & 9 pin Computer Interface Cable

ASK ABOUT OUR OTHER DATA RECORDERS

Temperature	Voltage
Humidity	Current
Pressure	Submersible
pH	Intrinsically Safe
Level	RF Transmitters
Shock/Vibration	Multi-parameter
Pulse/Event	



201 Route 103 West - PO Box 50 · Warner, NH 03278
Phone: (603) 456-2011 · Fax: (603) 456-2012
info@madgetech.com · www.madgetech.com