

QUADRTDTEMPV2

4-CHANNEL RTD TEMPERATURE DATA LOGGER



Features

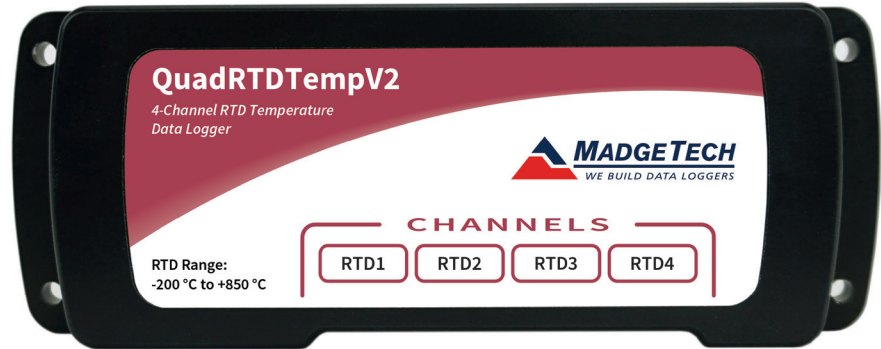
- ± 0.04 °C Calibrated Accuracy
- Real-time Operation
- Up to 4 Hz Reading Rate
- Pushbutton or Programmable Start Time
- Title Channels
- External Power or User Replaceable Battery
- Accepts 2, 3 and 4-wire RTD's
- Calibration Certificate included

Benefits

- Simple Setup and Installation
- Minimal Long-Term Maintenance
- Long-Term Field Deployment

Applications

- Calibration Chamber Monitoring
- Process Verification/Validation
- Warehouse Monitoring
- Precision Temperature Monitoring
- HVAC
- Clean Rooms
- Medical/Pharmaceutical
- Museum Monitoring
- Environmental Studies
- Replace Costly Strip Chart Recorders
- Implement HACCP Programs



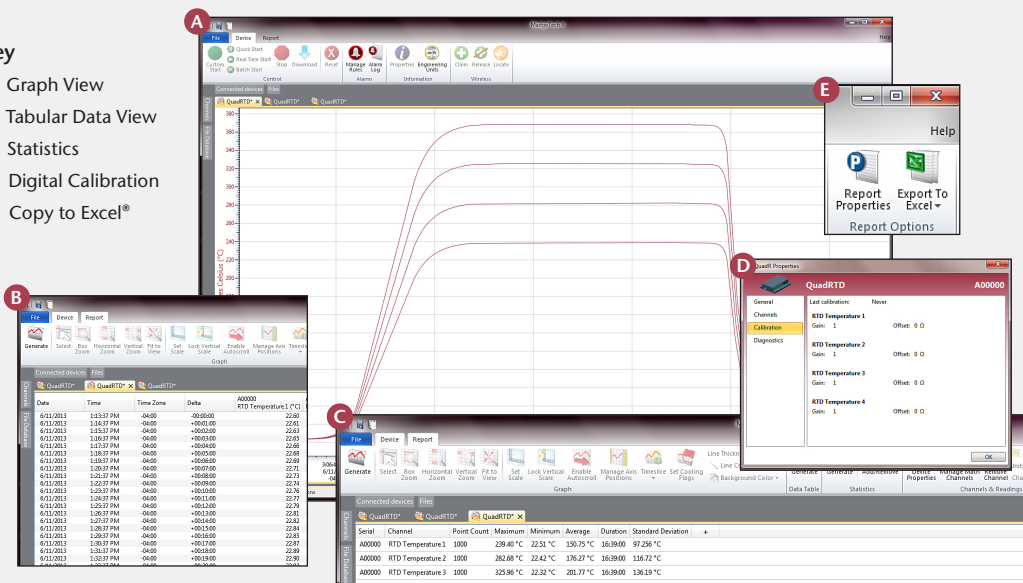
The QuadRTDTempV2 is a 4-channel, RTD based, temperature data logger with a reading rate of up to 4 Hz. It can measure and record up to 349,184 readings per channel. To maximize memory capacity, users can enable or disable channels. For easy identification, each channel can be named with up to a ten digit title. To maximize memory capacity, users can enable or disable channels. The storage medium is non-volatile solid state memory, providing maximum data security even if the battery becomes discharged. The QuadRTDTempV2 makes data retrieval quick and easy.

Using the MadgeTech Software, starting, stopping and downloading from the QuadRTDTempV2 is simple and easy. Graphical, tabular and summary data is provided for analysis and data can be viewed in multiple units, using the Engineering Units function. The data can also be automatically exported to Excel® for further calculations.

MADGETECH DATA LOGGER SOFTWARE

Key

- A** Graph View
- B** Tabular Data View
- C** Statistics
- D** Digital Calibration
- E** Copy to Excel®



Software Features:

- Multiple graph overlay
- Statistics
- Digital calibration
- Zoom in/ zoom out
- Lethality equations (F0, PU)
- Mean Kinetic Temperature
- Full time zone support
- Data annotation
- Min./Max./Average lines
- Data table view
- Automatic report generation
- Summary view
- Multilingual

DIMELCO

Zone Acticentre – 156/220 Rue des Farnards – CRT2 - CS10210 – 59273 FRETIN – RCS 317555746
03 20 62 06 80 – commercial@dimelco.com

QUADRTDTEMPV2 SPECIFICATIONS*

*Specifications are subject to change without notice. Specific warranty remedy limitations apply. Call (603) 456-2011 or go to madgetech.com for details.

| | |
|---|---|
| **Temperature Measurement Range: | 18.5 Ω to 390.5 Ω -200 $^{\circ}\text{C}$ to +850 $^{\circ}\text{C}$ (-328 $^{\circ}\text{F}$ to +1562 $^{\circ}\text{F}$) (Probe Dependent) |
| Resolution: | 0.0005 Ω 0.01 $^{\circ}\text{C}$ (0.018 $^{\circ}\text{F}$) (Probe Dependent) |
| ***Calibrated Accuracy: | $\pm 0.015 \Omega$ @ 25 $^{\circ}\text{C}$ (77 $^{\circ}\text{F}$) ambient $\pm 0.04 \text{ }^{\circ}\text{C}$ ($\pm 0.072 \text{ }^{\circ}\text{F}$) (Probe Dependent) |
| Specified Accuracy Range: | 18.5 Ω to 175.9 Ω -200 $^{\circ}\text{C}$ to +200 $^{\circ}\text{C}$ (-328 $^{\circ}\text{F}$ to 392 $^{\circ}\text{F}$) |
| Channels: | 4 |
| Input Connection: | Removable screw terminal; 2, 3 or 4 wire interface |
| Temperature Effect on Span: | 2 ppm/ $^{\circ}\text{C}$ typical |
| Start Modes: | Software programmable immediate start or delay start up to six months in advance, programmable in software |

**Temperature specifications based on ideal 100 Ω Pt RTD compliant with IEC 751 (1983) and ITS-90, 5000 Ω FSR (accuracy based on 36 in lead wire RTD with 4 wire configuration)

***Calibrated accuracies based on standard MadgeTech calibrations for 0 Ω to 200 Ω range.

Warning: Note the polarity instructions. Do not attach wires to the wrong terminals. 100 Ω , 2 or 4 wire RTD probes are recommended for the most accurate performance. Most 100 Ω , 3 wire RTD probes will work, but MadgeTech cannot guarantee the accuracy. To determine whether or not the 3-wire RTD probe will work, the resistance between the two same colored wires should be less than 1 Ω . (Note: Please contact the manufacturer of the RTD probe for questions on the resistance.)

| | |
|--|--|
| Real Time Recording: | May be used with PC to monitor and record data in real time |
| Memory: (all 4 channels enabled) | 349,184 readings per channel |
| Reading Rate: | 4 Hz up to 1 reading every 24 hours |
| Calibration: | Digital calibration through software |
| Calibration Date: | Automatically recorded within device |
| Battery Type: | 9V lithium or alkaline battery included, user replaceable |
| Battery Life: | 1 year typical |
| Data Format: | Date and time stamped $^{\circ}\text{C}$, $^{\circ}\text{F}$, K, $^{\circ}\text{R}$; Ω |
| Time Accuracy: | ± 1 minute/month |
| Computer Interface: | USB (Interface cable required); 115,200 baud |
| Software: | Windows XP SP3 or later MadgeTech 4 software, version 4.2.12.0 or later |
| Operating Environment: | -20 $^{\circ}\text{C}$ to +60 $^{\circ}\text{C}$, 0 %RH to 95 %RH non-condensing |
| Dimensions: | 2.7 in x 7.2 in x 1.0 in (69 mm x 184 mm x 26 mm) |
| Weight: | 15 oz (420 g) |

BATTERY WARNING: BATTERY MAY LEAK, FLAME OR EXPLODE IF DISASSEMBLED, SHORTED, CHARGED, CONNECTED TOGETHER, MIXED WITH USED OR OTHER BATTERIES, EXPOSED TO FIRE OR HIGH TEMPERATURE. DISCARD USED BATTERY PROMPTLY. KEEP OUT OF REACH OF CHILDREN.

ORDERING INFORMATION

| MODEL | PART NUMBER | DESCRIPTION |
|---------------|-------------|--|
| QUADRTDTEMPV2 | 902072-00 | 4-Channel RTD Temperature Data Logger |
| IFC200 | 900298-00 | Software, manual and USB interface cable |
| U9VL-J | 901804-00 | Replacement battery for QuadRTDTempV2 |

ASK ABOUT
OUR OTHER
DATA
LOGGERS

Temperature
Humidity
Pressure
pH
Level
Shock
LCD Display
Pulse/Event/State
Current
Voltage
Wireless
Intrinsically Safe
Spectral Vibration
Motion

For Quantity Discounts call (603) 456-2011 or email sales@madgetech.com