

# QUADVOLT V2

## 4-CHANNEL VOLTAGE DATA LOGGER



### Features

- Real-time operation
- Programmable engineering units
- Up to 4 Hz Reading Rate
- Title Channels
- Compact
- External Power or User Replaceable Battery
- Pushbutton or Programmable Start Time
- Calibration Certificate included

### Applications

- Low level signal monitoring
- Medical and pharmaceutical
- Battery studies
- Power supply monitoring
- Process plants
- Environmental studies
- Research and development
- Replace costly strip chart recorders



The QuadVoltV2 is an 4-channel, battery powered, DC voltage data logger with a reading rate of up to 4 Hz. It can measure and record 349,184 readings per channel. To maximize memory capacity, users can enable or disable channels. For easy identification, each channel can be named with up to a ten digit title.

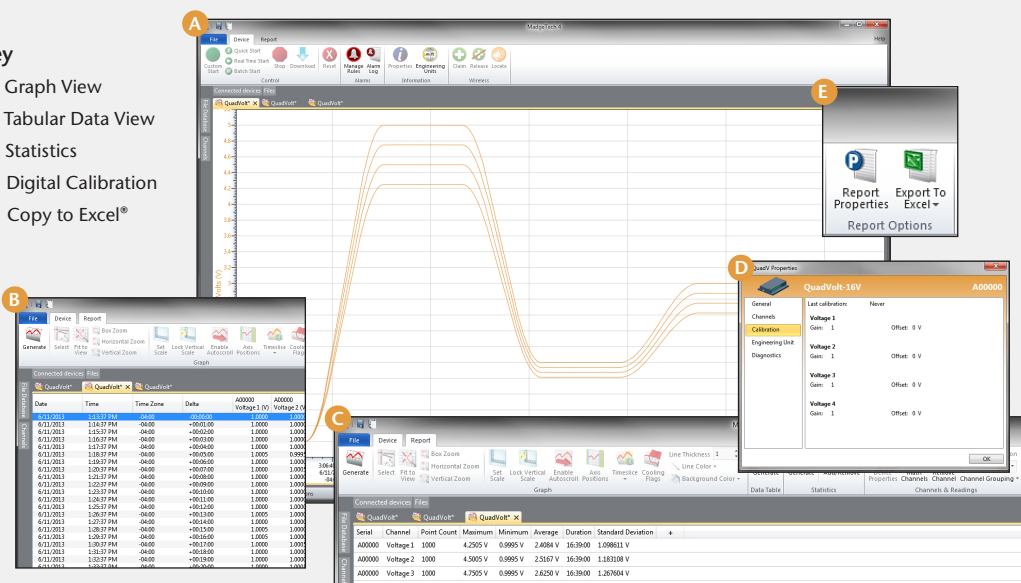
This easy to use device features a 1 year battery life, user replaceable battery and programmable engineering units. The storage medium is non-volatile solid state memory, providing maximum data security even if the battery becomes discharged.

Using the MadgeTech Software, starting, stopping and downloading from the QuadVoltV2 is simple and easy. Graphical, tabular and summary data is provided for analysis and data can be viewed in multiple units, using the Engineering Units function. The data can also be automatically exported to Excel® for further calculations.

## MADGETECH DATA LOGGER SOFTWARE

### Key

- A** Graph View
- B** Tabular Data View
- C** Statistics
- D** Digital Calibration
- E** Copy to Excel®



### Software Features:

- Multiple graph overlay
- Statistics
- Digital calibration
- Zoom in/ zoom out
- Lethality equations (F0, PU)
- Mean Kinetic Temperature
- Full time zone support
- Data annotation
- Min./Max./Average lines
- Data table view
- Automatic report generation
- Summary view
- Multilingual

DIMECO

Zone Acticentre – 156/220 Rue des Farnards – CRT2 - CS10210 – 59273 FRETIN – RCS 317555746  
03 20 62 06 80 – [commercial@dimeco.com](mailto:commercial@dimeco.com)

# QUADVOLT V2 SPECIFICATIONS\*

\*Specifications are subject to change without notice. Specific warranty remedy limitations apply. Call (603) 456-2011 or go to [madgetech.com](http://madgetech.com) for details.

Input Connection:	4 removable screw terminals		
Model:	160 mV	3.2 V	32 V
Voltage Range:	±160 mV	±3.2 V	-8 V to +32 V
Voltage Resolution:	0.15 µV	0.004 mV	0.004 mV
Calibrated Accuracy:	±0.01 %FSR	±0.05 %FSR	±0.05 %FSR
Input Impedance:	1 MΩ	125 kΩ	125 kΩ
Overload Protection:	±3.5 V for 10 seconds	50 V	50 V
Temperature Coefficient:	25 ppm/°C	25 ppm/°C	25 ppm/°C
Analog Conversion Time:	150 ms		
Frequency Rejection:	50 Hz - 60 Hz		
Specified Accuracy Range:	Nominal range @ 25 °C		
Engineering Units:	Native measurement units can be scaled to display measurement units of another type. This is useful when monitoring voltage outputs from different types of sensors such as temperature, CO2, flow rate and more.		
Start Modes:	Software programmable immediate start or delay start up to six months in advance		

Memory: (all 4 channels enabled)	349,184 readings per channel
Reading Rate:	4 Hz up to 1 reading every 24 hours
Real Time Recording:	May be used with PC to monitor and record data in real time
Calibration:	Digital calibration through software
Calibration Date:	Automatically recorded within device
Battery Type:	9V lithium or alkaline battery included; <b>user replaceable</b>
Battery Life:	1 year typical
Data Format:	Date and time stamped V, mV, µV, engineering units specified through software
Time Accuracy:	±1 minute/month
Computer Interface:	USB (Interface cable required); 115,200 baud
Software:	Windows XP SP3 or later MadgeTech 4 software, version 4.2.12.0 or later
Operating Environment:	-20 °C to +60 °C, 0 %RH to 95 %RH non-condensing
Dimensions:	2.7 in x 7.2 in x 1.0 in (69 mm x 184 mm x 26 mm)
Weight:	15 oz (420 g)
Materials:	Black anodized aluminum

**BATTERY WARNING:** BATTERY MAY LEAK, FLAME OR EXPLODE IF DISASSEMBLED, SHORTED, CHARGED, CONNECTED TOGETHER, MIXED WITH USED OR OTHER BATTERIES, EXPOSED TO FIRE OR HIGH TEMPERATURE. DISCARD USED BATTERY PROMPTLY. KEEP OUT OF REACH OF CHILDREN.

## ORDERING INFORMATION

MODEL	PART NUMBER	DESCRIPTION
QUADVOLT V2-160mV	902074-00	±160 mV 4-Channel Voltage Data Logger
QUADVOLT V2-3.2V	902076-00	±3.2 V 4-Channel Voltage Data Logger
QUADVOLT V2-32V	902078-00	-8 V to +32 V 4-Channel Voltage Data Logger
IFC200	900298-00	Software, manual and USB interface cable
U9VL-J	901804-00	Replacement battery for QuadVolt V2

ASK ABOUT  
OUR OTHER  
DATA  
LOGGERS

Temperature  
Humidity  
Pressure  
pH  
Level  
Shock  
LCD Display  
Pulse/Event/State  
Current  
Voltage  
Wireless  
Intrinsically Safe  
Spectral Vibration  
Motion