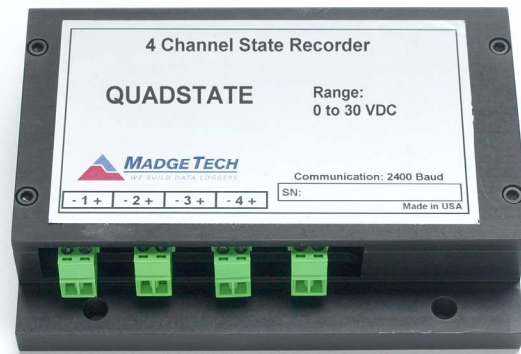


### FEATURES

- ❖ Interfaces to contact closures
- ❖ Real-time operation
- ❖ Low cost
- ❖ Programmable start time
- ❖ Programmable engineering units
- ❖ User-friendly
- ❖ Convenient size
- ❖ Reusable

### APPLICATIONS

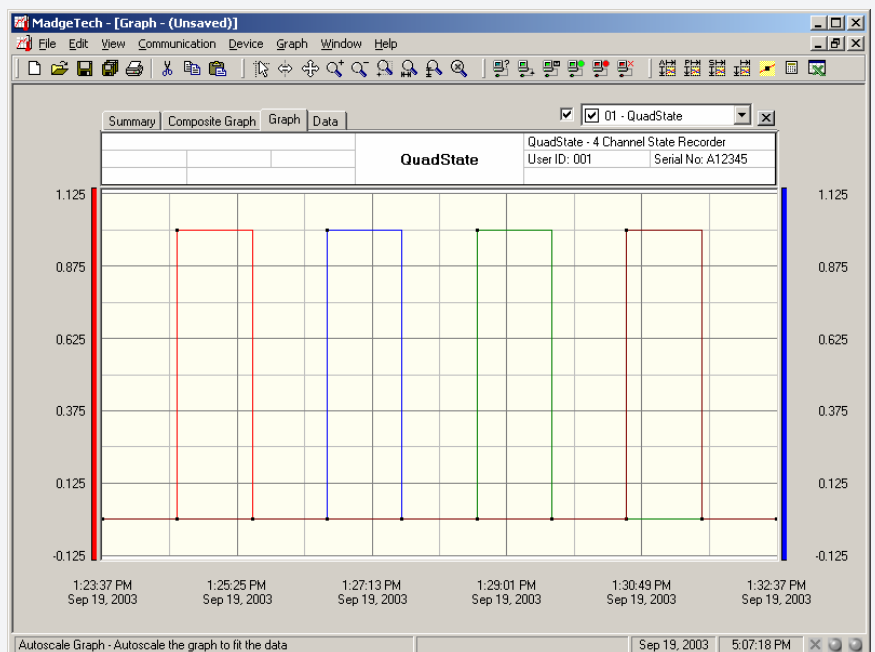
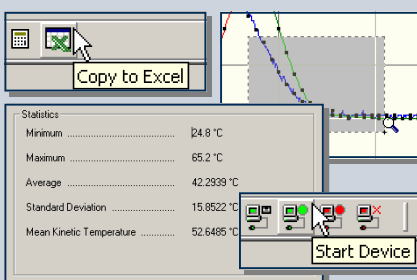
- ❖ Security systems
- ❖ Power supply on/off
- ❖ Relay or dry contact closure
- ❖ TTL high/low
- ❖ Monitoring gas, water or electric pumps
- ❖ Time studies
- ❖ Status or state recording
- ❖ Replace costly strip chart recorders



The QUADSTATE is a four channel, battery powered, stand alone state recorder. This is an all-in-one compact, portable, easy to use device that will measure and record up to 52,428 state changes. The storage medium is non-volatile solid state memory, providing maximum data security even if the battery becomes discharged. The device can be started and stopped directly from your computer and its small size allows it to fit almost anywhere. The QUADSTATE makes data retrieval quick and easy. Simply plug it into an empty com port and our user-friendly software does the rest.

### SOFTWARE

MadgeTech's Data Recorder Software is an easy to use Windows-based software package that allows the user to effortlessly collect, display and analyze data. A variety of powerful tools allow you to examine, export, and print professional looking data with just a click of the mouse.



Demo our software at [www.madgetech.com](http://www.madgetech.com)

## QUADSTATE SPECIFICATIONS

<b>Input Connection:</b> 4 removable screw terminals	<b>Memory:</b> 52,484 state changes
<b>Input Low:</b> < 0.4 V	<b>Real Time Recording:</b> May be used with PC to monitor and record data in real time
<b>Input High:</b> > 2.7 V	<b>Calibration:</b> Digital calibration through software
<b>Input Range:</b> 0 to 30 V	<b>Calibration Date:</b> Automatically recorded within device
<b>Input Impedance:</b> > 1KOhm	<b>Power:</b> 9V lithium or alkaline battery included
<b>Time Resolution:</b> 1 second (reading rate dependent)	<b>User Replaceable Battery:</b> 1 year typical
<b>Engineering Units:</b> User may define units up to 10 characters in length. This value is stored within the device.	<b>Data Format:</b> Date and time stamped state changes (on/off) engineering units specified through software
<b>Scale Factor:</b> User may program any desired scaling factor from $\pm 1.000E-31$ to $\pm 9.999E+31$ . The scaling factor is stored within the device.	<b>Time Accuracy:</b> $\pm 1$ minute/month (at 20 °C, RS232 cable not in use)
<b>Start Time:</b> Software programmable start time and date, up to six months in advance	<b>Computer Interface:</b> PC serial or RS232C COM (interface cable required); 2,400 baud
<b>Reading Interval:</b> 1 reading every second to 1 every 12 hours	<b>Software:</b> Windows 95/98/ME/NT/2000/XP based software
	<b>Operating Environment:</b> -40 °C to +80 °C, 0 to 95 %RH non-condensing
	<b>Dimensions:</b> 3.5" x 4.4" x 1.0" (89 mm x 111 mm x 26 mm)
	<b>Weight:</b> 13 oz (370 g)

## QUADSTATE SOFTWARE FEATURES

<b>Multiple Graphs:</b> Simultaneously analyze data from several units or deployments; easily switch to a single data series	<b>Statistics:</b> Calculate averages, min, max, standard deviation, and mean kinetic temperature with the touch of a button
<b>Real-Time Recording:</b> Collect and display data in real-time while continuing to log	<b>Export Data:</b> Export data in a variety of common formats, or switch to Excel with a single click
<b>Graphical Cursor:</b> One click displays readings by time, value, parameter or sample number	<b>Calibration:</b> Fully digital calibration function automatically stores parameters in device
<b>Data Table:</b> Instantly access tabular view for detailed dates, times, values, and annotations	<b>Logger Configuration:</b> Easy set up and launch of data loggers with immediate or delayed start, preferred sample rate, and device ID
<b>Scaling Options:</b> Autoscale function fits data to the screen, or allows user to manually enter their own values	<b>Communications:</b> Automatically sets up communications port, or lets user set configuration
<b>Formatting Options:</b> Change colors, line styles, plotting options, show or hide channels in an instant	<b>Printing:</b> Automatically print graphical or tabular data

\*\*As part of our commitment to continuous product improvement, MadgeTech reserves the right to change product specifications without notice

### ORDERING INFORMATION

Model	Description
QUADSTATE	4 Channel State Recorder
IFC110	Software, manual and 9-pin computer interface cable

### ASK ABOUT OUR OTHER DATA RECORDERS

Temperature	pH
Humidity	Level
Pressure	Shock/Vibration
Bridge/Strain	Submersible
Current	Intrinsically Safe
Pulse/Event	RF Transmitters
Voltage	Multi-parameter