

OCTPROCESSV2 8-CHANNEL CURRENT DATA LOGGER



Features

- 16-bit readings provide high resolution
- User-defined engineering units
- Pushbutton or Programmable Start Time
- External Power or User Replaceable Battery
- Real time operation
- Up to 4 Hz Reading Rate
- Calibration Certificate included
- Title Channels

Applications

- 4 mA to 20 mA recording
- pH recording
- Low level signal monitoring
- Photovoltaic studies
- Battery studies
- Biological sensor monitoring
- Factory process control
- Research and development
- Medical and Pharmaceutical
- Environmental studies



The OctProcessV2 is an 8-channel, battery powered, low level DC current data logger with a reading rate of up to 4 Hz. It can measure and record 261,888 readings per channel. To maximize memory capacity, users can enable or disable channels. For easy identification, each channel can be named with up to a ten digit title.

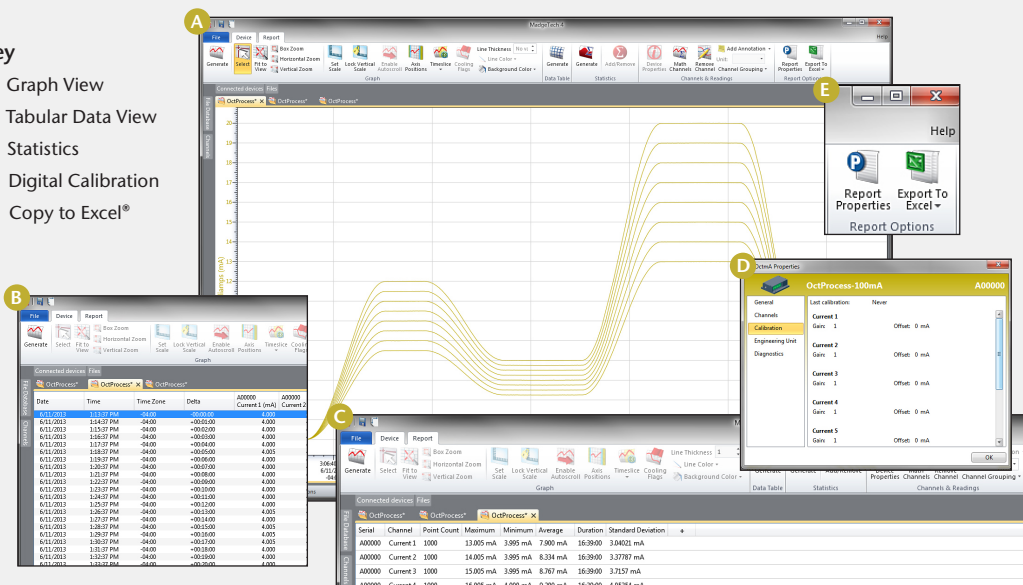
This easy to use device features a 1 year battery life, user replaceable battery and programmable engineering units. The storage medium is non-volatile solid state memory, providing maximum data security even if the battery becomes discharged.

Using the MadgeTech Software, starting, stopping and downloading from the OctProcessV2 is simple and easy. Graphical, tabular and summary data is provided for analysis and data can be viewed in multiple units, using the Engineering Units function. The data can also be automatically exported to Excel® for further calculations.

MADGETECH DATA LOGGER SOFTWARE

Key

- A** Graph View
- B** Tabular Data View
- C** Statistics
- D** Digital Calibration
- E** Copy to Excel®



Software Features:

- Multiple graph overlay
- Statistics
- Digital calibration
- Zoom in/ zoom out
- Lethality equations (F0, PU)
- Mean Kinetic Temperature
- Full time zone support
- Data annotation
- Min./Max./Average lines
- Data table view
- Automatic report generation
- Summary view
- Multilingual

OCTPROCESSV2 SPECIFICATIONS*

*Specifications are subject to change without notice. Specific warranty remedy limitations apply. Call (603) 456-2011 or go to madgetech.com for details.

Nominal Range:	-2 mA to +30 mA	±160 mA	±3 A
Measurement Range:	-2 mA to +30 mA	±160 mA	±3 A
Input Voltage Range:	0 to 2.5 V	0 to 2.5 V	0 to 2.5 V
Resolution:	0.5 µA	5 µA	100 µA
Calibrated Accuracy:	±0.05% FSR	±0.05% FSR	±0.15% FSR
Input Impedance:	10 Ω	1 Ω	0.1 Ω
Overload Protection: (-0.3 V to +3.5V)	±316 mA	±1 A	±6 A
Input Connection:	8, 3-input removable screw terminals		
Analog Conversion Time:	150 ms		
Temperature Coefficient:	< 50 ppm/°C typical		
Engineering Units:	Native Measurement units can be scaled to display measurement units of another type. This is useful when monitoring current outputs from different types of sensors such as temperature, CO ₂ , flow rate and more.		
Start Modes:	Software programmable immediate start and delay start up to six months in advance		

Memory: (all 8 channels enabled)	261,888 readings per channel
Reading Rate:	4 Hz up to 1 reading every 24 hours
Real Time Recording:	May be used with PC to monitor and record data in real time
Calibration:	Digital calibration through software
Calibration Date:	Automatically recorded within device
Battery Type:	9V lithium or alkaline battery included; user replaceable
Battery Life:	1 year typical
Time Accuracy:	±1 minute/month
Data Format:	Date and time stamped A, mA, µA, engineering units specified through software
Software:	Windows XP SP3 or later MadgeTech 4 Software, version 4.2.12.0 or later
Computer Interface:	USB (Interface cable required); 115,200 baud
Operating Environment:	-20 °C to +60 °C (-4 °F to +140 °F), 0 %RH to 95 %RH non-condensing
Dimensions:	2.7 in x 7.2 in x 1.3 in (69 mm x 184 mm x 32 mm)
Weight:	17 oz (490 g)

Common mode voltage must be less than 3 volts. All inputs must be within 3 volts of all other inputs.

BATTERY WARNING: BATTERY MAY LEAK, FLAME OR EXPLODE IF DISASSEMBLED, SHORTED, CHARGED, CONNECTED TOGETHER, MIXED WITH USED OR OTHER BATTERIES, EXPOSED TO FIRE OR HIGH TEMPERATURE. DISCARD USED BATTERY PROMPTLY. KEEP OUT OF REACH OF CHILDREN.

ORDERING INFORMATION

MODEL	PART NUMBER	DESCRIPTION
OCTPROCESSV2-30mA	902081-00	-2 mA to +30 mA 8-Channel Current Data Logger
OCTPROCESSV2-160mA	902083-00	±160 mA 8-Channel Current Data Logger
OCTPROCESSV2-3A	902085-00	±3 A 8-Channel Current Data Logger
IFC200	900298-00	Software, manual and USB interface cable
U9VL-J	901804-00	Replacement battery for OctProcessV2

ASK ABOUT
OUR OTHER
DATA
LOGGERS

Temperature
Humidity
Pressure
pH
Level
Shock
LCD Display
Pulse/Event/State
Current
Voltage
Wireless
Intrinsically Safe
Spectral Vibration
Motion