

Accurately read, display and check rotational speeds.



RT STROBE 3000

Light-intense, compact stroboscope
for stationary and mobile use.



Exceptional
light intensity

High image definition

Many different
application options

Homogenous
illumination area

**High light-intensity and extremely short flash time,
the best technology for perfect sharply defined images**



High light performance

Thanks to the large, homogenous illumination area, you get outstanding results even in unfavourable light conditions. This makes the RT STROBE 3000 ideal for a wide range of measurement, observation and inspection tasks. Especially suitable for difficult tasks, such as applications in the printing industry.

Super sharp frozen image

Powerful electronics give the RT STROBE 3000 high illumination intensity. Up to 10 megalux (for each individual flash). Because of the extremely short flash duration (<5µs) you get a precise sharply defined image however fast the movements are.

Flexible use

Drill holes on the underside enable the stroboscope to be mounted firmly on your equipment. The additional tripod connection means you can move the stroboscope to different locations.

Rapid result

When a trigger signal is fed in, the stroboscope flashes in time with this signal. If the flash frequency matches the movement frequency, a frozen image appears – perfect for precise observations.

Additional control

Link your RT STROBE 3000 to a control unit, e.g. the RT STROBE control. This gives you a wide range of signal influencing options, which provides perfect usage conditions, even if an uncontrolled external signal would trigger flashes too frequently (for example) or at the wrong location.

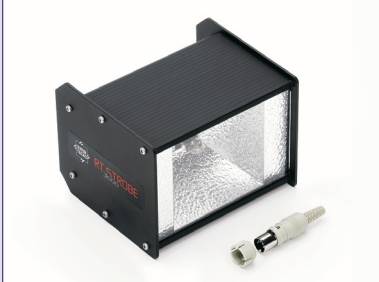
Technical data

General parameters	
Frequency range	0...12.500 FPM (flashes per minute)
Power supply	15 - 28 V DC / 12 W DIN 41524 5-pin standard plug Universal power supply unit available
External trigger input	3 - 30 V / max. 5 mA (voltage-free optocoupler) DIN 41524 5-pin standard plug Uout = Uin, max. 200 mA
Flash parameters	
Life cycle	> 200,000,000 flashes (@ 6,000 FPM)
Flash duration	< 5 µs
Illumination intensity	Single flash 10 megalux/30 cm/12"
Illumination intensity	500 lux/30 cm/12" (@ 6,000 FPM)
Illumination area	20x30 cm
Light colour	6,000...6,500 K
Flash energy	600 mJ @ ≤1,200 FPM
Housing	
Material	Aluminium
Dimensions	150x130x112 mm / 6.0x5.1x4.4 inch
Weight	870 g
Ambient conditions	
Ambient temperature	0...40 °C (32...104 °F)
Storage temperature	-25...70 °C (-13...158 °F)
Air humidity	Max. 95 %, non-condensing
Certificates	
	EMV / EMC 2004/108/EC
	EN 61010:2001
	2006/95/EC

RHEINTACHO Messtechnik GmbH

Waltershofener Straße 1
79111 Freiburg • Germany
Telefon +49 (0)761 45 13 0
Telefax +49 (0)761 44 52 74
info@rheintacho.de
www.rheintacho.de

Scope of delivery



Stroboscope RT STROBE 3000, operating instructions, 1 plug for trigger input and power supply

Accessories (optional)



Spare flash light, tripod / wall mounting, power supply unit, 1 plug for trigger signal / power supply connection, stroboscope control unit.